

1  
2  
3  
4  
5  
6  
7  
8  
9  
10  
11  
12  
13  
14  
15  
16  
17  
18  
19  
20  
21  
22  
23

**The emerging threats of climate change on tropical coastal ecosystem services, public health, local economies and  
livelihood sustainability of small islands: Cumulative impacts and synergies**

E.A. Hernández-Delgado<sup>1,2,3</sup>

<sup>1</sup>University of Puerto Rico, Center for Applied Tropical Ecology and Conservation, Coral Reef Research Group, PO Box 23360, San Juan, Puerto Rico 00931-3360; <sup>2</sup>University of Puerto Rico, Department of Biology, PO Box 23360, San Juan, Puerto Rico 00931-3360; <sup>3</sup>Sociedad Ambiente Marino, PO Box 22158, San Juan, Puerto Rico 00931-2158

[edwin.hernandezdelgado@gmail.com](mailto:edwin.hernandezdelgado@gmail.com)

Tel. 1 (787) 764-0000, x-2009; Fax 1 (787) 772-1773

24  
25  
26  
27  
28  
29  
30  
31  
32  
33  
34  
35  
36  
37  
38  
39  
40  
41  
42  
43  
44

**Abstract**

Climate change has significantly impacted tropical ecosystems critical for sustaining local economies and community livelihoods at global scales. Coastal ecosystems have largely declined, threatening the principal source of protein, building materials, tourism-based revenue, and the first line of defense against storm swells and sea level rise (SLR) for small tropical islands. Climate change has also impacted public health (i.e., altered distribution and increased prevalence of allergies, water-borne, and vector-borne diseases). Rapid human population growth has exacerbated pressure over coupled social-ecological systems, with concomitant non-sustainable impacts on natural resources, water availability, food security and sovereignty, public health, and quality of life, which should increase vulnerability and erode adaptation and mitigation capacity. This paper examines cumulative and synergistic impacts of climate change in the challenging context of highly vulnerable small tropical islands. Multiple adaptive strategies of coupled social-ecological ecosystems are discussed. Multi-level, multi-sectorial responses are necessary for adaptation to be successful.

45  
46  
47  
48  
49

*Keywords*— Climate change adaptation, Community livelihood, Coral reefs, Environmental decline, Public health, Vulnerability

50  
51  
52  
53  
54  
55  
56  
57  
58  
59  
60  
61  
62  
63  
64  
65

**1. Introduction**

*“Human influence on the climate system is clear, and recent anthropogenic emissions of greenhouse gases are the highest in history. Recent climate changes have had widespread impacts on human and natural systems. Warming of the climate system is unequivocal, and since the 1950s, many of the observed changes are unprecedented over decades to millennia. The atmosphere and ocean have warmed, the amounts of snow and ice have diminished, and sea level has risen. Anthropogenic greenhouse gas*

1  
2 emissions have increased since the pre-industrial era, driven largely by economic and population growth, and are now higher  
3 than ever. This has led to atmospheric concentrations of carbon dioxide, methane and nitrous oxide that are unprecedented in  
4 at least the last 800,000 years. Their effects, together with those of other anthropogenic drivers, have been detected throughout  
5 the climate system and are extremely likely to have been the dominant cause of the observed warming since the mid-20th  
6 century. In recent decades, changes in climate have caused impacts on natural and human systems on all continents and across  
7 the oceans. Impacts are due to observed climate change, irrespective of its cause, indicating the sensitivity of natural and  
8 human systems to changing climate. Continued emission of greenhouse gases will cause further warming and long-lasting  
9 changes in all components of the climate system, increasing the likelihood of severe, pervasive and irreversible impacts for  
10 people and ecosystems. Surface temperature is projected to rise over the 21st century under all assessed emission scenarios. It  
11 is very likely that heat waves will occur more often and last longer, and that extreme precipitation events will become more  
12 intense and frequent in many regions. The ocean will continue to warm and acidify, and global mean sea level to rise. Climate  
13 change will amplify existing risks and create new risks for natural and human systems. Risks are unevenly distributed and are  
14 generally greater for disadvantaged people and communities in countries at all levels of development. Many aspects of climate  
15 change and associated impacts will continue for centuries, even if anthropogenic emissions of greenhouse gases are stopped.  
16 The risks of abrupt or irreversible changes increase as the magnitude of the warming increases” (IPCC, 2014a).  
17  
18  
19  
20  
21  
22  
23  
24  
25  
26  
27  
28  
29  
30

31 The above statement constitutes part of the most significant conclusions of the International Panel on Climate Change  
32 (IPCC) 5<sup>th</sup> Assessment Report, which explicitly defined the implications of climate change impacts in the near future. The  
33 report also concluded that warmer and/or fewer cold days and nights will occur over most land areas at the end of the 21<sup>st</sup>  
34 century, as well as warmer and/or more frequent hot days and nights. An increased frequency and/or duration of warm spells  
35 and/or heat waves will also be very likely to occur over most land areas. Heavy precipitation events and an increased frequency,  
36 intensity, and/or amount of heavy precipitation will also be very likely to occur, particularly along wet tropical regions. Other  
37 potential impacts very likely to occur at regional scales include the increased intensity and/or duration of drought conditions,  
38 increased intense tropical cyclone activity, increased sea surface warming and ocean acidification, and the increased incidence  
39 and/or magnitude of extreme high sea level. The combined impacts of these factors may affect multiple ecosystems functions,  
40 compromise food security and sovereignty, public health, local economies and people’s livelihood sustainability in still largely  
41 unknown ways.  
42  
43  
44  
45  
46  
47  
48  
49  
50  
51  
52  
53

54 Current trends in changing climate, in combination with mathematical model predictions, have shown that anthropogenic-  
55 driven climate change has already had or will unequivocally have unprecedented impacts on biodiversity (Bellard et al., 2012),  
56 across multiple terrestrial (Shukla et al. 1990, Melillo et al. 1993; Still et al., 1999; Bonan 2008) and marine ecosystems  
57  
58  
59  
60  
61  
62  
63  
64  
65

(Michener et al., 1997; Hoegh-Guldberg, 1999; Hoegh-Guldberg et al., 2007; Veron et al. 2009; NRC, 2010), with significant implications for human settlements (Mimura 1999; Nichols et al., 2008; Nichols and Cazenave, 2010; Chindarkar, 2012), and variable but often negative and significant socio-economic consequences across regional scales (Tol, 2002; Parry et al., 2004; Stern, 2006; Lane et al., 2013). This is a particular concern for developing nations and small island nations, with rapidly growing human populations. Current impacts associated with SLR, altered patterns of tropical and extra-tropical cyclones, increasing air and sea surface temperatures (SST), and changing rainfall patterns confirm findings reported on small islands from the 4<sup>th</sup> Assessment Report and previous IPCC assessments. The future risks associated with these drivers include loss of adaptive capacity and ecosystem services critical to lives and livelihoods in small islands (IPCC, 2014b). Increasing population density may significantly reduce adaptive capacity in small islands.

Human population growth can have paramount impacts in the use and conservation of natural resources (Holdren and Ehrlich, 1974; Vitousek et al., 1997; Vörösmarty et al., 2000; McKee et al., 2003). Such impacts could be significantly magnified by climate change. But potential long-term impacts of climate change in a human-dominated world still remain largely unknown (Karl and Trenberth, 2003). Some abrupt impacts on vulnerable coastal and marine ecosystems can occur rapidly beyond tolerance thresholds to changing environmental variables (NRC, 2013). Others may occur over very slow, often undetected, transient states between alternate stable states (Hughes et al., 2013a,b), implying a need to reevaluate the spatial and temporal scales of impacts and ecosystem conservation-oriented management strategies (Rau et al., 2012). This could have monumental long-term implications when analysed in the combined and synergistic context of climate change impacts on environmental and public health, as well as that associated to SLR, declining biodiversity, water availability, food security and sovereignty, and on declining local economies and community-based livelihoods. Analyses of the combined and synergistic impacts of these factors are still largely missing.

The conservation of coastal ecosystem biodiversity, resilience, functions, benefits and services has acquired an unparalleled value in the context of projected trends of climate change impacts at a global scale. Mean atmospheric (ATM) carbon dioxide (CO<sub>2</sub>) concentration at the Mauna Loa Observatory, Hawaii, reached during July 2015 a maximum concentration of 401.3 ppm. There was a mean value of 404.4 ppm during early April 2015 (NOAA-ESRL data, 2015). Mean annual rates of change in ATM CO<sub>2</sub> have increased from 0.6 ppm/y during mid-20<sup>th</sup> century to 2.17 ppm/y over the last decade (Fig. 1), with an increase of 2.4 ppm between early 2014 and early 2015. This suggests that a sustained minimal global ATM CO<sub>2</sub> concentration of 400 ppm has been already reached, implying that global-scale measures to reduce atmospheric emissions of greenhouse gases (GHG) have not been effective enough to reduce accelerating ATM CO<sub>2</sub> build up. GHG emissions rates increased during 2000-2010 by a factor of 2.2%/y, in comparison to 1.3%/y during 1980-1990 (IPCC, 2014a). Under a continuing business-as-usual

1 scenario, the unprecedented 600 ppm benchmark in ATM CO<sub>2</sub> concentration could be reached by 2082 or earlier, and the 800  
2 ppm benchmark by 2130, if not earlier. This could result in an unprecedented increase in ATM CO<sub>2</sub> concentration and global  
3 temperature with yet unknown consequences across unprecedented rapid temporal and widespread biological scales.  
4  
5

6  
7 SST rise itself is not unprecedented. What has no parallel in the geological record, at least over the last 800Ky (Jouzel et al.,  
8 2007), is the current trend of change observed since mid-19<sup>th</sup> century. Current mean SST is 7°C higher in comparison to the  
9 Pleistocene 130,000 years ago (McCulloch et al., 1999). It is also 6.5°C higher in comparison to the Holocene 10,350 y bp  
10 (Beck et al., 1997). Such changes, though relatively rapid on a geological time scale ( $\approx 1^\circ\text{C}/4483$  y since the Pleistocene;  
11  $\approx 1^\circ\text{C}/2040$  y since the Holocene), do not even compare to the current escalating trend measured at 0.4 to 0.8°C only during the  
12 20<sup>th</sup> century (Cane et al., 1997; Delworth and Knutson, 2000; Stock et al., 2011). A 0.6°C increase has also occurred over the  
13 last three decades (Hansen et al., 2006). Current trends have escalated up to 0.2°C/decade. So far the Earth is within  $\approx 1^\circ\text{C}$  of the  
14 warmest maximum during any interglacial period over the last 1.35 million years (Medina-Elizalde and Lea, 2005; Hansen et  
15 al., 2006). Increasing temperature trends have scaled up after the global industrialization (Andronova and Schlesinger, 2000;  
16 Folland et al., 2001) at rates with no precedent in the geological record. There is also a projected SST increase of at least 1-3°C  
17 above current values by the end of 21<sup>st</sup> century (Hoegh-Guldberg, 1999; Kauffman et al., 2006), with potential to reach up to  
18 4.8°C (IPCC, 2014a). This may trigger significant changes in tropical marine ecosystems, including recurrent massive coral  
19 bleaching episodes (Fig. 2) in the near future with potentially dramatic ecological (McWilliams et al., 2005; Buddemeier et al.,  
20 2008, 2011; Veron et al., 2009; Hoeke et al., 2011) and socio-economic (Lane et al., 2013) consequences for coral reefs and  
21 other coastal ecosystems. If no significant control on GHG emissions is implemented at a global scale, this would have  
22 irreversible environmental, ecological, health, and socio-economic consequences, particularly on small tropical island nations  
23 and low-lying coastal plains along developing nations. Insular states are often very low emitters of GHG, but yet are potentially  
24 the most vulnerable to the long-term effects of climate change.  
25  
26  
27  
28  
29  
30  
31  
32  
33  
34  
35  
36  
37  
38  
39  
40  
41  
42  
43

44 There is also an increasing concern with climate change impacts on public health (Haines et al., 2000, 2006; Patz et al., 2005;  
45 Keim, 2008; Méndez-Lázaro, 2012) and how this could magnify human vulnerability to other climate-related impacts, including  
46 altered weather patterns, water availability, crops and fisheries productivity, food security and sovereignty, SLR, biodiversity  
47 loss, and ecosystem change, and their combined socio-economic and political consequences (Liverman, 1990. Climate change  
48 represents one of the greatest environmental and health equity challenges of our times (Patz and Kovats, 2002). Wealthy,  
49 energy-consuming, GHG-emitter nations are most responsible for global warming, yet poor countries with significant socio-  
50 economic, environmental, public health, and hunger stresses are at most risk. This could further have meaningful political  
51 consequences as these factors may trigger massive migrations and potential invasions of adjacent countries. There is evidence  
52  
53  
54  
55  
56  
57  
58  
59  
60  
61  
62  
63  
64  
65

1 that changes in the spatio-temporal distribution and prevalence of many diseases have occurred over recent years (Haines et al.,  
2 2000; Patz et al., 2000; Ziska et al., 2003; Horton et al., 2010), with major impacts on developing countries, but attempts to  
3  
4 quantitatively link such changes to climate-driven ecosystem change are still largely lacking. There is also consensus that  
5  
6 factors such as increased thermal stress, extreme weather events, future regional food yields, and infectious disease and hunger  
7  
8 prevalence will become the major public health threats of climate change (Patz et al., 2005; McMichael et al., 2006). But there  
9  
10 are still major concerns regarding health risks due to the social, demographic, and economic disruptions driven by climate  
11  
12 change. Further, SLR has been forecasted to rapidly increase over the 21<sup>st</sup> century with increasing coastal erosion impacts  
13  
14 (Gornitz, 1995; Wong, 2003), groundwater salinization (Ranjan et al., 2006), and major forecasted displacement of human  
15  
16 populations from low-lying coastal areas (Jallow et al., 1996). SLR should flood substantial low-lying coastal urban and  
17  
18 industrial areas with resulting chronic unprecedented levels of pollution of coastal waters. The combined cumulative impacts of  
19  
20 climate change, human population growth, urban sprawling, and increased industrial and agricultural activities, in combination  
21  
22 with SLR, will likely result in increased eutrophication of coastal waters (Rabalais et al., 2009). This may result in increased  
23  
24 harmful algal bloom events, reduced water quality, hypoxia (oxygen depletion), and habitat loss. Poor island nations with high  
25  
26 prevalence of hunger and endemic diseases, and that have undergone massive deforestation and a nearly total fisheries collapse,  
27  
28 such as Haiti, are particularly vulnerable to such impacts. Nonetheless, the combined long-term ecological, environmental,  
29  
30 public health impacts of SLR in increasing coastal pollution, and its concomitant impact on local economies and in declining  
31  
32 people's livelihoods have still been poorly addressed. These factors are expected to have a permanent adverse impact on the  
33  
34 local economy and livelihood sustainability of coastal human settlements, particularly on small tropical islands with limited  
35  
36 alternative socio-economic and geographic resources, and due to their higher vulnerability to rapid changes and severely limited  
37  
38 adaptive capacity. This would require challenging and unprecedented institutional processes focused in strengthening natural  
39  
40 resource management, governance, economic efficiency and welfare maximization in an aim to successfully adapt to climate  
41  
42 change (Adger et al., 2005a,b).  
43  
44

45 The objective of this paper is to explore the relationship between tropical coastal ecosystems decline as a result of climate  
46  
47 change and SLR, and its implications on public health, food production, local economies and livelihood sustainability, with  
48  
49 most emphasis on highly vulnerable small islands. Several possible feedback mechanisms are discussed to explain these  
50  
51 interactions. Recommendations for the development of rapid climate change adaptation strategies are suggested.  
52  
53

## 54 **2. Goods and services of coral reefs and other coastal ecosystems: How much could be at stake?**

55  
56  
57  
58  
59  
60  
61  
62  
63  
64  
65

1 Coastal ecosystems such as coral reefs, seagrass meadows, mangroves and wetlands constitute the first line of defence  
2 against storm swells, coastal erosion and SLR, therefore, provide humans multiple goods, benefits and services (Moberg and  
3 Folke, 1999). However, their continuing decline will have significant adverse consequences for biodiversity and ecosystem  
4 functions, and may also imply multiple negative impacts on their socio-economic value and benefits such as food production,  
5 public health and people's livelihood sustainability. Therefore, their ecosystem services value should significantly increase as  
6 threats from SLR and climate change increase. Average global values of annual ecosystem services were estimated in 1997 to  
7 reach \$12.6 trillion U.S. dollars (USD) for open oceans, \$8.4 trillion for open oceans, \$4.3 trillion for shelves, \$4.1 trillion for  
8 estuaries, \$3.8 trillion for seagrass and algal beds, and \$375 billion for coral reefs (Costanza et al., 1997). These totaled an  
9 annual value of over \$33.5 trillion back in 1997, and \$28.9 trillion converted to 2007 USD. But Costanza et al. (2014) estimated  
10 in 2011 the value of open oceans in \$60.5 trillion as of 2007 USD (+109%), \$5.2 trillion for estuaries (-9%), \$5.8 trillion for  
11 seagrass and algal beds (+10%), and over \$21.7 trillion for coral reefs (+3,838%). The dramatic increase in the value of coral  
12 reefs shifted from a mean \$8,384/ha/yr in 1997 to \$352,249/ha/yr in 2011, adjusted to 2007 USD values, a change that was  
13 largely related to an increased number of studies regarding their role in storm protection, erosion protection, and recreation  
14 (Costanza et al., 2014). Also, there has been a 55% loss of coral reef area due to a combination of natural and anthropogenic  
15 stressors.  
16  
17  
18  
19  
20  
21  
22  
23  
24  
25  
26  
27  
28  
29  
30

31 The net benefits of coral reef ecosystems were also estimated at \$30 billion USD/year (Cesar et al., 2003), which based in the  
32 47% U.S. cumulative inflation rate between January 1997 and December 2014 (data from the Consumer Price Index published  
33 by the U.S. Bureau of Labor Statistics), would represent about \$38.7 billion 2014 USD. The net benefits of coastal ecosystems  
34 in general were estimated in \$25.8 billion USD/year (Martínez et al., 2007). Burke and Spalding (2011) estimated Caribbean  
35 coral reef annual net benefits of \$2.7 billion USD for tourism, from \$944 million to \$2.8 billion USD for shoreline protection,  
36 and of \$395 million USD for coral reef fisheries. But alarming global inflationary trends (Krichene, 2008), as well as increased  
37 threats from different anthropogenic factors, in combination with climate change and SLR (Buddemeier et al., 2004; Meehl et  
38 al., 2005), have largely increased the significance and cost of conserving and rehabilitating coastal ecosystem services. Under  
39 current climate change projections, such values will become much higher particularly for small, low-lying, tropical island  
40 nations and developing countries, where most coral reef ecosystems are found, and where their local economies and livelihoods  
41 rely almost exclusively on the condition, goods and services of coral reefs and other associated coastal ecosystems (Barnett and  
42 Adger, 2003). Many of these vulnerable countries are often characterized by having large population densities, living under  
43 unsustainable poverty levels, weak natural resource governance, often having very limited access to technology, and lacking  
44  
45  
46  
47  
48  
49  
50  
51  
52  
53  
54  
55  
56  
57  
58  
59  
60  
61  
62  
63  
64  
65

1 human and financial resources to manage and conserve their natural resources, which are frequently overexploited (i.e., massive  
2 tourism) and are highly vulnerable to climate change impacts (Hernández-Delgado et al., 2012).  
3  
4

5 Coral reefs represent one of the most critical resources for livelihood sustainability on small tropical island nations and  
6 developing countries. Examples of the goods and services provided by coral reef ecosystems include fisheries (source of  
7 protein), raw materials for construction, raw natural products for pharmaceutical, food and cosmetic industries, resources for  
8 jewelry and aquarium trade markets, tourism and recreation, aesthetic value, cultural, religious and spiritual values, shoreline  
9 protection from erosion, promote the development of seagrasses and mangroves on wave-protected zones, the generation of  
10 coralline sands, land-based waste assimilation, and climate regulation (Conservation International, 2008). Other ecological  
11 services include maintenance of biodiversity, genetic diversity and habitat diversity, regulation of ecosystem processes and  
12 functions, and the biological maintenance of resilience. There is also an intrinsic value through the connectivity between  
13 ecosystems through mobile links (Lundberg and Moberg, 2003) and through exporting of organic production to pelagic food  
14 webs. Reefs also provide important bio-geochemical services such as nitrogen fixation  $\text{CO}_2/\text{Ca}^{++}$  budget regulation, and land-  
15 based nutrient assimilation. Coral reefs and associated ecosystems also function as monitors and recorders of environmental  
16 change and historical pollution trends, and contribute to climate regulation. But coral reefs and other coastal ecosystems have  
17 rarely been considered part of the critical coastal infrastructure, a value which has been poorly documented (Emerton, 2006).  
18 Further, the natural protective functions and benefits of coastal ecosystems have often been undervalued or ignored in most  
19 economic analyses. Undervaluing coastal ecosystem services has often resulted in a lack of adequate investment in their  
20 management and protection in proportion to their benefits. In consequence, their “real” value has been significantly  
21 underestimated and ecosystems are being rapidly degraded by a combination of human-driven factors across local to global  
22 scales without adequately addressing how much could be at stake through the “real” socio-economic loss.  
23  
24  
25  
26  
27  
28  
29  
30  
31  
32  
33  
34  
35  
36  
37  
38  
39  
40  
41

42 Recent troubling evidence of global coral reef conditions presents a deeply concerning picture of these ecosystems. A recent  
43 glimpse of representative coral reefs from all oceans at a global scale show unequivocal evidence of major decline (Wilkinson,  
44 2008; Sale and Szmant, 2012), and unprecedented regime shifts and disruption of ecosystems and climate (Hughes et al.,  
45 2013a,b). Multiple local human activities threaten the majority of reefs and associated coastal ecosystems at a global scale and  
46 the accelerating impacts of global factors, such as increasing ATM  $\text{CO}_2$  concentration (Veron et al., 2009), sea surface warming  
47 (Hoegh-Guldberg et al., 2007; Hoegh-Guldberg, 2009, 2011; Hoegh-Guldberg and Bruno, 2010), ocean acidification (Dupont et  
48 al., 2010; Pandolfi et al., 2011), and SLR (Meehl et al., 2005) are compounding these problems (Burke and Spalding, 2011) and  
49 driving many countries to an increased risk of vulnerability. Stoeckl et al. (2011) also suggested that rapid degradation of coral  
50 reef adjoining ecosystems may limit ecosystem services these provide to reefs, thus additionally contributing to their demise.  
51  
52  
53  
54  
55  
56  
57  
58  
59  
60  
61  
62  
63  
64  
65

Degraded coral reefs yield limited goods and services, which is expected to have magnified negative socio-economic impacts on small tropical island communities with strong reliance on coral reefs, increasing the risk of poverty (Turner et al., 2007). Many of such communities often rely on massive tourism as their main source of economic revenue, but often at the expense of rapid environmental degradation, revenue leakage, and increased vulnerability to many socio-economic, environmental, and climate change-related threats (Hernández-Delgado et al., 2012). Countries with higher risks of coral reef degradation often due to poor land use and soil conservation practices, higher dependence on reef ecosystems, overexploited natural resources, scarce water supplies, poor economic and public health condition, limited food sustainability, weak political structure and governance, and low adaptive capacity, are the most vulnerable to projected trends of climate change-related impacts, including SLR. In the long run, such impacts may even act synergistically to enhance vulnerability and poverty. Poverty and food security and sovereignty are two of the most critical concerns associated to climate change (Sánchez, 2000), and these are directly linked to the degradation of coral reef ecosystems. Poverty and a lack of protein are directly linked to fisheries overexploitation which in turn could lead to coral reef decline due to reef food web shrinkage, to increased abundance of coral predators, and due to algal overgrowth. Reef degradation in turn could lead to increased levels of hunger, increased dependence on already overexploited reef resources, and in more desperate acts of destructive fishing (i.e., using poisons and explosives to fish). Food security, sovereignty and poverty must be immediately addressed to save coral reefs in the least developed countries. Equity and justice are also another concern as the poorest and most vulnerable nations often disproportionately experience adverse effects of climate change (Smit and Pilifosova, 2001; Thomas and Twyman, 2004; Mearns and Norton, 2010), particularly when poor nations have also been exposed to increasing impacts of economic globalization (O'brien and Leichenko, 2000) and hunger. These combined factors may further lead to security concerns associated to climate change (Barnett, 2001).

Potential interactions and synergies among these factors still have poorly understood feedback mechanisms (Fig. 3). One of the critical aspects of such synergisms that still remain largely unexplored is that related to the potential accelerated impacts that coastal environmental degradation and climate change might have on public health and food security and sovereignty. Degraded coastal water quality as a result of SLR flooding of coastal urban centers and declining coastal ecosystem functions, benefits and services due to increased pollution could have potential permanent negative consequences on ecosystems, public health, local economies and livelihood sustainability. This may trigger impacts on coastal communities that can amplify change, i.e., via accelerated ecosystem decline, increasing fishing efforts and resource exploitation (Cinner et al., 2012), and increasing prevalence of water-borne diseases, which may permanently impair ecosystem resilience, uses and benefits, potentially collapsing regional tourism-based economy, local economies and people's livelihoods. The interdependence between human activities and the natural environment has also become a concern due to increasing stresses associated with the adverse impacts



of overwhelming public debt and climate change. Protected areas development is one of the most cost-effective mechanisms to secure many ecosystem benefits, while simultaneously mitigating the impacts of climate change. To achieve this dual objective, protected areas development must be brought more centrally into land use planning process, ensuring that economic strategies and development plans recognize the critical contributions by protected areas to sustainable development. In the long run, this will contribute to the conservation of natural resources and to foster the sustainability of goods, benefits and services of coastal ecosystems.

### 3. The long-term cost of tropical coastal ecosystems decline

The current spatial scale, diversity, frequency, and severity of adverse impacts on tropical coastal ecosystems are unprecedented in the recent (Aronson and Precht, 2001; Aronson et al., 2002; Pandolfi et al., 2005) and past geological record (Mesolella, 1967; Pandolfi, 1996, 1999; Pandolfi and Jackson, 2001, 2006). Impacts by a diverse array of anthropogenic activities have increased in recent decades to the extent that tropical coastal ecosystems, particularly coral reefs, are threatened globally (Hughes et al., 2003). Human stressors such as poor land use patterns (DiDonato et al., 2009), massive deforestation (Ramos-Scharrón, 2012), mangrove and wetland filling (McLeod and Salm, 2006), increased urban construction along coastal areas and watersheds (Hernández-Delgado et al., 2012; Ramos-Scharrón et al., 2012), eutrophication (Cloern, 2001; Díaz-Ortega and Hernández-Delgado, 2014), pollution (Hernández-Delgado et al., 2010, 2011), sedimentation and nutrients (Rogers, 1990; Meesters et al., 1998; Erftemeijer and Lewis, 2006; Risk, 2014), and historical overfishing over temporal scales of centuries to millennia (Jackson, 1997, 2001; Jackson et al., 2001; Pandolfi et al., 2003; Fitzpatrick and Donaldson, 2007) have largely contributed to a significant decline in species richness, biomass of target taxa, and on the resilience, functions, benefits and services of most tropical coastal ecosystems. These escalating threats may have a critical impact on existing coral species diversity (Huang, 2012) and on fisheries sustainability (Pauley et al., 2002; McClanahan et al., 2011; Pratchett et al., 2014). It may require challenging conservation-oriented management measures across unprecedented spatial and temporal scales (MacNeil and Graham, 2010; Rau et al., 2012), even beyond trans-national boundaries.

Losing coral reefs and associated ecosystems, such as seagrasses, in combination with continuing mangrove and coastal wetland filling, will have unprecedented impacts to existing coastal human settlements. Approximately, 500 million people depend on coral reefs at a global scale (Wilkinson, 2008). Any adverse impacts to these ecosystems, its adjoining terrestrial ecosystems and to coastal water quality may represent an increased risk in people's vulnerability to climate change as coral reefs, seagrasses, reef islands and mangrove systems constitute the first line of defense against storm tides, winter swells and SLR. A wide combination of factors such as shifting demands in the globalized economy, lack of socio-economic and political stability, shortage of local supplies of critical resources (i.e., water, food, fuel), or weather extremes could put the resilience of

reef-dependent people on stake (Hughes et al., 2005). But coastal-based human settlements are going to be challenged like never before as climate change will exert an unprecedented influence in societies (IPCC, 2007). The scale and rate of environmental change driven by increases in the concentration of GHG (Hönish et al., 2009) and ocean acidification (Hönish et al., 2012) is also unprecedented in the recent geological record beyond human history. The present rate of CO<sub>2</sub> emissions will produce an atmospheric concentration within less than 100 years not even experienced during the past 20 million years and SST above those of the Pleistocene interglacial 130,000 years before present (McClanahan, 2002; IPCC, 2007). This may lead in the next few decades to significant – and in many cases dramatic – alterations in the availability and quality of tropical coastal ecosystem goods and services (McClanahan, 2002; Veron et al., 2009; Pratchett et al., 2014).

The ecological impacts of climate change on tropical marine ecosystems are also predicted to be diverse and long-lasting (Hoegh-Guldberg et al., 2007; Veron et al., 2009; Hughes et al., 2013a,b), with wide direct and indirect repercussions on different coastal ecosystems, including those occupied by human populations (Table 1). Climate change will affect weather patterns, riverine, estuarine, mangrove and wetland ecosystems, and their connectivity to coastal marine ecosystems, therefore affecting beaches and coral reefs, their biodiversity, resilience, productivity, benefits and services. SLR will particularly create significant problems to human settlements on low-lying coastal lands prone to flooding and beach erosion (Gornitz, 1995; Wong, 2003), with unprecedented property losses (CCSP, 2009), and increased insurance costs to compensate for weather extremes (Mills et al. 2005). This may result in increased vulnerability to extreme weather events (CCSP, 2009), declining coastal water quality and increased risks to public health as a result of increased pollution of coastal waters adjacent to large flooded urban areas (Hunter, 2003). There are multiple early warning signals pointing out at different factors which are showing unequivocal signs of change and distress. However, lack of technology and resources across many small island nations and developing countries can significantly limit their ability to timely detect, respond, mitigate, and/or adapt to forecasted changes.

#### **4. Early warning signals**

Global scale observations have already evidenced multiple climate-related early warning signals. This has included unequivocal trends and projections of increasing sea and air temperatures across global scales (Hoerling et al., 2001, 2004; Hurrell et al.; 2004; IPCC, 2007, 2014a), significant warming of the poles and rapid ice sheet melting (Jacobs et al., 1996; Oppenheimer, 1998; Johannessen et al., 2004; Krabill et al., 2004; Luthcke et al., 2006), increased anthropogenic GHG forcing (Hansen et al., 2007), increased recurrence of El Niño Southern Oscillation (ENSO) events connected with increasing temperature (Díaz et al., 2001), rising sea levels (Woodworth et al., 2009; Nicholls and Cazenave, 2010; Rignot et al., 2011), and increasing beach erosion rates from SLR (Wong, 2003; Ogston and Field, 2010). There is also a trend towards acidifying oceans (Orr et al., 2005; Pandolfi et al., 2011; Kaniewska et al. 2012), increased combined impacts of high SST and

1 acidification in corals (Anthony et al., 2011), mass coral bleaching and post-bleaching coral mortality events (Miller et al.,  
2 2006, 2009; Eakin et al., 2010), and marine infectious disease outbreaks across multiple taxa (Burge et al., 2014). Hurricanes  
3  
4 have increased in frequency (Knutson et al., 1998; Mann and Emanuel, 2006), severity (Elsner, 2006; Bender et al., 2010),  
5  
6 duration (Webster et al., 2005), and have shown altered routes across the Atlantic under warming conditions (Pezza and  
7  
8 Simmonds, 2005; Slater et al., 2005), with increased destructive potential (Lugo, 2000; Emanuel, 2005). There is also evidence  
9  
10 of increased risks of hurricane intensity with increased ATM CO<sub>2</sub> (Knutson et al., 1998; Knutson and Tuleya, 1999, 2004;  
11  
12 Anthes et al., 2006). Spatio-temporal shifts in atmospheric humidity (Manabe and Wetherald, 1980) and rainfall patterns have  
13  
14 also been documented (Walther et al., 2002; Neelin et al., 2006), including an increase in the occurrence of extreme rainfall  
15  
16 events across very large spatial scales (Easterling et al., 2000; Meehl et al., 2007), which may impact coral reef ecosystems  
17  
18 (Hernández-Delgado et al., 2014). Such alterations may also trigger significant alterations in terrestrial ecosystems functioning  
19  
20 and productivity. There is experimental evidence that declining rainfall during ENSO resulted in declining vegetation species  
21  
22 diversity in tropical forest ecosystems (Bunker and Carson, 2005). Further, declining rainfall could have adverse impacts on  
23  
24 estuarine productivity in response to altered timing and availability of freshwater, nutrients and sediment delivery rates (Scavia  
25  
26 et al., 2002). It may also represent a risk of declining coastal aquifer recharge, which in combination with increasing SLR may  
27  
28 result in salt groundwater intrusion (Frederick and Major, 1997; Ranjan et al., 2006), a problem potentially exacerbated by the  
29  
30 typical small island trends of rapid population growth and migration towards larger coastal cities (Mimura, 1999) which may  
31  
32 increase water consumption demand.  
33  
34

35 Mathematical models have shown at least a 25% weakening in the North Atlantic thermohaline circulation (Schmittner et al.,  
36  
37 2005), with regional and global alterations on ocean-atmosphere circulation (Trenberth, 1990; Deser and Blackmon, 1993;  
38  
39 Visbeck, 2002; Rahmstorf, 2003). This could influence rainfall and hurricane patterns, as well as trade winds strength and  
40  
41 spatial extent across regional to global spatial scales (Black et al., 1999; Taylor et al., 2012). Weaker trade winds and a negative  
42  
43 North Atlantic Oscillation (NAO) oceanographic circulation index can alter salinity patterns across the Caribbean (Schmidt et  
44  
45 al., 2004), produce increased sea surface warming of high latitudes due to increased latent heat transport from the equator  
46  
47 (Schmittner and Stocker, 1999), as well as altered phytoplankton (Hays et al., 2005; Martínez et al., 2009; Boyce et al., 2010;  
48  
49 Siegel and Franz, 2010; McQuatters-Gallop et al., 2011) and zooplankton (Brodeur et al., 1999; Richardson, 2008) dynamics  
50  
51 and community composition due to declining nutrient upwelling effects, a drop in primary productivity (Barton et al., 2003;  
52  
53 Behrenfeld et al., 2006; Taylor et al., 2012), and in shifting fisheries productivity (Taylor et al., 2012). It has also been estimated  
54  
55 that alterations of the thermohaline circulation may contribute to increase sea level up to 1 m (Knutti and Stocker, 2000;  
56  
57 Levermann et al., 2005; Rahmstorf, 2006), with important consequences for coastal settlements. Transport of oxygen from the  
58  
59  
60  
61  
62  
63  
64  
65

1 sea surface to the deep ocean would slow or cease, depriving the deep oceans of their supply of oxygen over scales of decades  
2 to centuries rendering them hypoxic or anoxic as happens now across many coastal regions (Justić et al., 1996, 1997; Rabalais et  
3 al., 2002). This may occur in combination with increasing primary production and consequent worldwide coastal eutrophication  
4 fueled by riverine runoff of fertilizers and the burning of fossil fuels (Rabalais et al., 2001; Díaz and Rosenberg, 2008), and a  
5 declining NAO, with potentially higher freshwater and dissolved nutrient inputs into coastal areas that may exacerbate the  
6 formation or expansion of dead zones. The combination of increasing SST and hypoxia may also foster significant alterations in  
7 the biogeographic distribution of multiple species (Pörtner, 2001), in part due to potentially increased stratification of the water  
8 column, surface freshening, and altered mixed-layer dynamics which may negatively impact the delivery of nutrients from the  
9 upper ocean where plant production occurs to dark deeper layers (Sarmiento et al., 1998; Stocker et al., 2001; Behrenfeld et al.,  
10 2006). In turn, this could affect deep-sea animals (i.e., commercial fish and squid species) and their communities in the water  
11 column and on the ocean floor. Deep water benthic ecosystems have already shown short-term responses to climate change  
12 (Glover et al., 2010). Nonetheless, links of these altered global-scale oceanic factors to declining coastal resources, and  
13 declining coastal economies and community-based livelihoods still remain poorly understood and should be a focus of future  
14 research.

15  
16  
17  
18  
19  
20  
21  
22  
23  
24  
25  
26  
27  
28  
29 Altered range shifts across terrestrial and marine species, as well as altered tree phenology, have also been documented among  
30 the most common early warning signals of climate change (Walther et al., 2002), in combination with major and often  
31 irreversible phase shifts in marine ecosystems (Hughes et al., 2013a,b). Widespread degradation of coral reef ecosystems has  
32 occurred as a combined result of recurrent hurricane impacts (Gardner et al., 2003), particularly following the Long-spine sea  
33 urchin (*Diadema antillarum*) mass mortality event across the wider Caribbean region in 1983-84 (Jackson et al., 2014). Massive  
34 coral bleaching and consequential mortality (Miller et al., 2006, 2009; Baker et al., 2008; Hernández-Pacheco et al., 2011;  
35 De'ath et al., 2012; Alemu and Clement, 2014), recurrent infectious diseases across multiple taxa (Burge et al., 2014), and  
36 ocean acidification (Hoegh-Guldberg et al., 2007; Dupont et al., 2010), in combination with factors associated to human  
37 exploitation (Jackson et al., 2014), have further contributed to the observed coral reef decline. Recent evidence suggests that  
38 elevated SST, in combination with eutrophication, can magnify impacts of sedimentation on coral reefs (Weber et al., 2012).  
39 Also, chronic eutrophication has been shown to produce up to a 3.5-fold increase in the prevalence and severity of coral  
40 bleaching and diseases (Vega-Thurber et al., 2013). Large-scale studies have shown a disturbing impairment of the regeneration  
41 potential of Caribbean coral reefs following disturbance (Gardner et al., 2005), and projections of climate change impacts  
42 suggest further unavoidable decline under current trends (Graham et al., 2006; Buddemeier et al., 2008, 2011; Hernández-  
43 Pacheco et al., 2011; Lane et al., 2013).

1 Coral reef fish community declines have also been documented across moderate to very large spatial scales coinciding with  
2 habitat decline (Jones et al., 2004; Pratchett et al., 2008; Paddock et al., 2009), threatening the sustainability of reef fisheries,  
3  
4 food security and sovereignty, and people's livelihoods across many countries (Pauley et al. 2002; Cinner et al., 2011, 2012;  
5  
6 McClanahan and Cinner, 2012). Coral-dependent fishes can suffer the most rapid population declines as coral is lost (Munday et  
7  
8 al., 2008; Pratchett et al., 2008, 2014). However, many other fish species may exhibit long-term declines due to the long-term  
9  
10 loss of settlement habitats and erosion of habitat structural complexity (Pratchett et al., 2008). Increased SST may also affect the  
11  
12 physiological performance and behavior of coral reef fishes, especially during their early life history (Roessig et al., 2004;  
13  
14 Munday et al., 2008). Increased SST is expected to accelerate larval development, potentially leading to reduced pelagic  
15  
16 duration and earlier reef-seeking behavior (Munday et al., 2009). Therefore, depending on the spatial arrangement of reefs, we  
17  
18 would expect a reduction in dispersal distances and the spatial scale of connectivity. A small increase in SST might enhance the  
19  
20 number of larvae surviving the pelagic phase, but larger increases are likely to reduce reproductive output and increase larval  
21  
22 mortality (Munday et al., 2009). Changes to ocean currents could also alter the dynamics of fish larval supply, may alter larval  
23  
24 dispersion routes and the scales necessary for effective dispersal for many species (Cowen et al., 2006), as well as the overall  
25  
26 spatial distribution of global-scale fisheries (Cheung et al., 2010). How could these alteration affect people's livelihoods across  
27  
28 local to regional spatial scales still remain largely unknown.  
29  
30

31 Combined factors such as chronic habitat decline, overfishing and declining herbivory rates may lead fish populations to fall  
32  
33 below critical minimums and to a significant decline in fertilization success (Ogden, 1997; Elmhirst et al., 2009). It may also  
34  
35 alter large-scale connectivity (Steneck, 2006) and could also impact planktonic productivity (Hays et al., 2005; Behrenfeld et  
36  
37 al., 2006), which could affect the amount of larvae surviving the pelagic stage and their condition at settlement. Even high-  
38  
39 latitude pelagic species exhibit significant changes in seasonal migration patterns related to climate-induced changes in  
40  
41 zooplankton productivity, changes in species composition, altered geographic distribution, and climate-related changes in  
42  
43 recruitment success stemming from either higher production or survival in the pelagic egg or larval stage, or owing to changes  
44  
45 in the quality/quantity of nursery habitats (Rijnsdorp et al., 2009). Further, the demographic impacts of fishing could have  
46  
47 substantial effects on the capacity of populations to buffer climate variability (i.e., changing demography, migration) and may  
48  
49 reduce the capacity of populations to withstand climate variability and change (Planque et al., 2010). At the ecosystem level,  
50  
51 such reduced complexity by elimination of species may be destabilizing and could lead to reduced resilience to disturbance.  
52  
53 Fishing and climate change have also been pointed out as co-factors leading to a ten-fold increase in medusae biomass in the  
54  
55 Bearing Sea (Brodeur et al., 1999). Combined effects may modify ocean energy and material flows as well as biogeochemical  
56  
57 cycles, eventually impacting the overall ecosystem functioning and services upon which people and societies depend (Doney et  
58  
59  
60  
61  
62  
63  
64  
65

al., 2012). These combined factors could have long-term negative impacts for fisheries productivity across regional to global spatial scales, and if combined with overall nursery grounds habitat degradation associated to increased pollution and SLR, could have unprecedented permanent impacts on coastal community livelihoods, particularly along the tropics.

Extreme weather events, mostly in the form of major rainfall episodes, could have significant impacts on watershed, estuarine and coastal dynamics and productivity. Although little is known about the effects of flooding on coral or reef fish recruitment, extreme rainfall and increased recurrence of flood events could potentially influence temporal patterns of coral reef connectivity on nearshore reefs, especially if increased freshwater runoff pulses differentially affect the survival and dispersal pattern of larvae or the production of the planktonic food that larvae need during their pelagic phase across coastal waters. For example, significant storm runoff can result in localized coral mortality (Nowlis et al., 1997), and chronic sediment deposition and nutrient inputs can smother reef benthic communities and impair reef growth (Rogers, 1990; Meesters et al., 1998; Ramos-Scharrón et al., 2012; Risk, 2014). It may also cause a decline in coral recruitment rates (Goh and Lee, 2010). Changes in nutrient availability associated with runoff can change the composition of plankton communities that are food for larvae (McKinnon et al., 2007) and changes in salinity can alter the direction of currents or cause larvae to modify their vertical position in the water column (Paris et al., 2002; Cowen et al., 2003). Also, there could be alterations at individual-level behavior, such as the avoidance of unfavorable conditions and, if possible, movement into suitable areas, population-level changes *via* changes in the balance between rates of mortality, growth and reproduction, and ecosystem-level changes in productivity and food web interactions (Pörtner and Peck, 2010). These factors will threaten the sustainability of food production in coral reefs, in the long run impacting reef-based fisheries and local community livelihoods.

## **5. The consequences of climate change on public health, vulnerability and adaptive capacity**

Large-scale alterations in temperature, rainfall, atmospheric circulation patterns and soil moisture can influence the spatio-temporal distribution and prevalence of human diseases and their vectors (Patz et al., 1998; Craig et al., 2004; Griffin, 2007). They can also influence the ability of humans to resist and recover from disturbance, which in the long term may influence their capacity to adapt to changes. Under such conditions the productivity of coupled social-ecological systems may be severely eroded, which may perpetuate vulnerability and poverty. Climate is a major factor controlling the potential for outbreaks of certain diseases with major negative economic impacts on societies (Greenough et al., 2001; Alley et al., 2005), though the economic impact of climate change effects on public health has still remained obscure. One particular vulnerability concern that has still been poorly addressed is the adverse economic effects associated to declining health on government expenditures on public health and education (Bosello et al., 2005). Yet, the concept of vulnerability to disease risk will depend not only on the environmental exposure, but also on the sensitivity and adaptive capacity of the group and place experiencing it (Comrie, 2007).

1 Children (Hosking et al., 2010), older citizens (Horton et al., 2010) and women (Cannon, 2002; Terry, 2009) are the most  
2 vulnerable groups, particularly the poor and those from remote regions (McGeehin and Mirabelli, 2001). Cultural factors and  
3 poverty can further enhance women's vulnerability (Cannon, 2002). Vulnerability to climate change can be further enhanced by  
4 globalization and other local geographic, socio-economic, political, cultural and health factors (O'Brien et al., 2004). Small low-  
5 lying islands are in a more vulnerable situation than large continental areas. Vulnerability reduction programs reduce  
6 susceptibility and increase resilience, and susceptibility to disasters can be largely reduced by prevention and mitigation of  
7 emergencies (Keim, 2008). Emergency preparedness and response and recovery activities—including those that address climate  
8 change—include disaster resilience. But this will ultimately depend on the socio-economic condition, governance weakness,  
9 and adaptive capacity of each individual place, and socio-economically compromised developing countries might have a very  
10 limited ability to prepare and respond to climate-related emergencies.  
11  
12  
13  
14  
15  
16  
17  
18  
19  
20

21 The interactions between environment and society are highlighted through multiple climate-related diseases, ranging from  
22 direct to complex relationships, including impacts from extreme heat, air pollution, aeroallergens, fungi, water- and food-borne  
23 diseases, influenza, and from rodent- and insect-borne diseases (Haines et al., 2000; Patz et al., 2000; Levett, 2001; Shiff, 2002;  
24 Craig et al., 2004; Comrie, 2007; Hurtado-Díaz et al., 2007; Gamble et al., 2008; Graves et al., 2008; Kearney et al., 2009;  
25 Keiser and Utzinger, 2009; Koelle, 2009; McManus et al., 2010). Vector-borne diseases will expand their geographic  
26 distribution and death tolls, especially among elderly people, because of heat waves, the indirect effects of climate change on  
27 water quality and availability, declining food security and sovereignty, and extreme climatic events (Costello et al., 2009).  
28 There is also a major concern of an increased prevalence of skin cancer associated to ozone depletion and increased UV  
29 radiation (Martens, 1998; de Vries et al., 2005). Further, interactions between ozone depletion and climate change might result  
30 in an increased incidence of cataracts and skin cancer, plus alterations in the patterns of certain categories of infectious and  
31 other diseases, and in potential suppression of immunological responses to diseases (de Gruijl et al., 2003). There is also  
32 increasing evidence of altered geographic distributions of some infectious disease vectors (ticks at high latitudes, malaria  
33 mosquitoes at high altitudes), fungi and bacteria transported through clouds of desert dust, and an uptrend in extreme weather  
34 events and associated deaths, injuries and other health outcomes (Reiter, 2001; Griffin, 2007; McMichael and Lindgren, 2011).  
35 Also, recently spreading maladies transmitted by mosquitoes, such as the chikungunya virus, have rapidly spread at global  
36 scales and have been associated to global warming trends (Epstein, 2007; Powers and Logue, 2007; Gould and Higgs, 2009;  
37 Rosenthal, 2009; Omarjee et al., 2014). Such altered patterns could trigger massive human migrations with largely unknown  
38 environmental, public health and socio-economic consequences (McLeman and Smit, 2006).  
39  
40  
41  
42  
43  
44  
45  
46  
47  
48  
49  
50  
51  
52  
53  
54  
55  
56  
57  
58  
59  
60  
61  
62  
63  
64  
65

1 Policy makers often perceive human migration as a problem, but migration has always been a key response to environmental  
2 and non-environmental transformations and pressures, including plague and disease outbreaks (see review by Miks, 2010), and  
3 should be a central element of strategies of adaptation to climate change (Tacoli, 2009). Migration has a long history, with  
4 droughts, floods, food shortages, and other climate-related changes forcing the resettlement of populations since early hominids  
5 first spread out from Africa nearly 2 million years ago (Barrett, 2012). Later, massive migrations occurred through the late  
6 Pleistocene and Holocene due to altered climate, glaciation and sea level changes (Núñez et al., 2002; Goebel et al., 2008; Pope  
7 and Terrell, 2008; Cruciani et al., 2010). More recent migrations have occurred through Europe over the last 2,500 years due to  
8 climate variability (Büntgen et al., 2011), followed by the collapse of the Mayan civilization as a result of 200-year long decline  
9 in rainfall (Haug et al., 2003; Medina-Elizalde and Rohling, 2012). There was also a significant migration in the United States  
10 during the agriculture crisis of the 1930's following drought and flooding cycles (McLeman and Smit, 2006), and across Africa  
11 due to seasonal variation in rainfall cycles (Guilmoto, 1998), seasonal hunger cycles (Ogbu, 1973), poverty and desertification  
12 (Brauch, 2006; Jónsson, 2010; Bettini and Anderson, 2014), or a combination of poverty, hunger and war (Toole et al., 1993;  
13 Jonsson and Durkee, 2011). Human-induced climate change is expected to contribute to even greater population movements in  
14 the coming decades, with perhaps as many as 250 million people expected to become “environmental refugees” by 2050  
15 (McMichael et al., 2012). This could even be more concerning to low-lying island nations where entire populations will  
16 inevitably be forced to migrate to another country due to flooding by SLR.

17  
18  
19  
20  
21  
22  
23  
24  
25  
26  
27  
28  
29  
30  
31  
32  
33 Climate-change-related migration is very likely to result in adverse socio-economic, cultural and health outcomes, both for  
34 displaced and for host populations, particularly in situations of forced migration, and in small island scenarios, affecting overall  
35 coupled social-ecological systems (Fig. 4). Migration, in combination with increasing population growth is likely to result in an  
36 increased demand for goods and services, in the potential perpetuation of non-sustainable globalized economic models,  
37 increased impacts to natural resources, cost of food production/importation and pollution, and in a declining productivity of  
38 coupled social-ecological systems. In the long run, this could adversely affect human resistance and resilience, community  
39 livelihoods, and adaptive capacity, resulting in a permanent poverty trap. In the other hand, increasing populations and the  
40 perpetuation of a globalized economic model may often lead to further exploitation of natural resources, which may typically  
41 lead to increased deforestation for crops and human settlements, increased soil erosion and runoff, and to further increased cost  
42 of food production/importation. Further, increased degradation of soil productivity may lead to declining soil fertility and food  
43 production capacity, which will increase the use of chemical fertilizers and pesticides. This will often result in significant  
44 chronic eutrophication and pollution of groundwater, surface water and coastal waters, which could further lead to declining  
45  
46  
47  
48  
49  
50  
51  
52  
53  
54  
55  
56  
57  
58  
59  
60  
61  
62  
63  
64  
65



1 productivity of coupled social-ecological systems. Resource misuse and overexploitation may also lead into a net erosion of  
2 human resilience and resistance, into declining adaptive capacity and livelihoods, and to increased vulnerability and poverty.  
3

4  
5 Among the vulnerable groups, women are likely to be disproportionately affected because on average women tend to be poorer,  
6 less educated, have a lower health status and have limited direct access to or ownership of natural resources (Chindarkar, 2012).  
7  
8 These direct and indirect impacts of climate change on human security may in turn increase the risk of violent conflict (Barnett  
9 and Adger, 2007), which may further trigger migration, social transformation and poverty.  
10  
11

12  
13  
14 Humans can be exposed to climate change-related impacts through variable pathways (Haines et al., 2006), including  
15 changing weather patterns and indirectly through changes in water, air and food quality and availability, and through changing  
16 ecosystems, agriculture, fisheries, economy and health (Table 2). In one hand, declining coupled social-ecological systems may  
17 result in a net simultaneous erosion of human and ecosystem resilience, which in one hand may result in a net loss of ecosystem  
18 goods and services, and socio-economic value (Fig. 5). In turn, this may result in a net decline in livelihoods, socio-economic  
19 and political stability, and in declining governance. If these conditions occur in combination with declining rainfall trends and  
20 SLR, it may also result in declining groundwater recharge, in combination with long-term salinization of groundwater and in  
21 declining food webs associated to coastal pollution and overexploitation. These combined factors may further result in declining  
22 food security/sovereignty, increased risk of starvation, declining public health, and increased social vulnerability. These factors  
23 may further affect human resilience and resistance, further impacting recovery ability and adaptive capacity, which in the long  
24 run may also lead to a poverty trap.  
25  
26  
27  
28  
29  
30  
31  
32  
33  
34  
35  
36

37 Effects are projected to progressively increase across many countries and regions, having direct and indirect impacts on the  
38 health of people. More extreme weather events (Relman et al., 2008), heat waves (Epstein, 2008), drought (Horton et al., 2010),  
39 spread of infective parasites (Colwell, 2008) and detrimental impacts on air (Bernard et al., 2001) and water quality (Hunter,  
40 2003; Patz et al., 2008) all have impacts on our health and will impose significant challenges to society (Costa, 2011). Further,  
41 the combination of malnutrition from drought-induced crop failures and impaired immunity from UV irradiation could increase  
42 epidemics of measles, mumps, rubella, polio, influenza, and pertussis in unimmunized populations across developing nations  
43 and refugee camps (Díaz, 2006).  
44  
45  
46  
47  
48  
49  
50  
51

52 A particular concern regarding spreading diseases is related to progressive flooding of coastal cities due to SLR and the  
53 potential impact of mixing polluted storm waters and sewage with coastal waters which may result in increased water-borne  
54 microbial loads. The food-, water-, and vector-borne microbial agents that will cause climate change-induced infectious disease  
55  
56  
57  
58  
59  
60  
61  
62  
63  
64  
65

1 outbreaks are often characterized by having low infective doses and high virulence, and being environmentally stable, and salt-,  
2 chlorine-, and iodine-resistant (Díaz, 2006). Water and food-borne diseases may include gastroenteritis caused by coccidian  
3 protozoans (*Cryptosporidium parvum*, *Cyclospora cayetanensis*, *Isospora belli*), hepatitis A virus, astroviruses, caliciviruses,  
4 *Giardia lamblia*, the non-cholera marine vibrios (*Vibrio vulnificus*, *V. parahaemolyticus*), *Campylobacter jejuni*, *Shigella* spp.,  
5 and the typhoidal and nontyphoidal *Salmonella* species (Díaz, 2006). Humans may be exposed to these bacteria following the  
6 consumption of contaminated drinking water or food exposed to animal or human carriers or by direct exposure of swimmers  
7 (Frumkin et al., 2008). The potential increase in such conditions may suggest an increased demand on emergency medicine  
8 responses particularly on highly vulnerable areas where resources and technology could be severely limited (Hess et al., 2009).  
9

10  
11  
12  
13  
14  
15  
16  
17 Climate change could also have multiple indirect impacts on public health. Warming trends favors the spread of disease,  
18 particularly under polluted conditions, as prolonged extreme weather events create conditions conducive to disease outbreaks,  
19 not only in humans, but also in wildlife, livestock, agricultural systems, forests and marine life (Epstein et al., 2005). There is  
20 evidence of microbiological water quality decline during warm ENSO episodes (Lipp et al., 2001). Diarrheal disease has been  
21 significantly correlated with increased temperature in Pacific islands (Singh et al., 2001). Fecal pollution has also been  
22 correlated with watershed population increases, and even more strongly correlated with the percentage of developed land within  
23 the watershed (Mallin et al., 2000; Méndez-Lázaro et al., 2012; Norat et al., 2013). Fecal pollution is also significantly higher  
24 under degraded turbid coastal waters with higher risks for coastal coral reef health (Fabricius and McCorry, 2006; Hernández-  
25 Delgado et al., 2010, 2011; Díaz-Ortega and Hernández-Delgado, 2014) and for recreational users (Shuval, 2003; Bonkosky et  
26 al., 2009). Climate change can also foster increasing disease incidence in waterfowl (Traill et al., 2009; Garamszegi, 2011),  
27 livestock (Gale et al., 2009), and on plants (Chakraborty and Newton, 2011), which may compromise the ability to harvest  
28 stocks, affecting human food security.  
29  
30  
31  
32  
33  
34  
35  
36  
37  
38  
39  
40  
41  
42

43 Climate-related temperature changes are also expected to increase the potency of airborne allergens due to spatial  
44 displacement and invasions (latitudinal, altitudinal) of multiple plant species, increasing pollen concentration in the air, length  
45 of the allergy season, strength of airborne allergens, and the resulting increases in allergy symptoms (Frumkin et al., 2008;  
46 Gamble et al., 2008) and asthma incidence (Beggs and Bambrick, 2006). There is substantial evidence in pollen paleo-records  
47 of long-term, range shifts and adaptive responses across large spatial and latitudinal scales in plant communities as a result of  
48 climate change (Huntley, 1991; Davis and Shaw, 2001). Climate change, in combination with shifting wind patterns, will allow  
49 certain allergen-producing plant species to migrate into novel habitats, and wind-blown dust, carrying pollen and molds from  
50 different regions at global scales could expose people to allergens they had not previously contacted. There is also evidence of  
51  
52  
53  
54  
55  
56  
57  
58  
59  
60  
61  
62  
63  
64  
65

1 prolonged pollen seasons in multiple plant species coinciding with increasing temperature (van Vliet et al., 2002; Galán et al.,  
2 2005; García-Mozo et al., 2006). Exposure to increased concentrations of pollen and mold may make current non-sufferers  
3  
4 more likely to develop allergic symptoms and may increase the risk to those chronically affected by allergies. Respiratory  
5  
6 illness could have more pronounced impacts across large urban centers which have already showed increased respiratory  
7  
8 disease prevalence due to air pollution from high energy consumption and heavy traffic (D'Amato et al., 2010). This could have  
9  
10 notorious economic impacts as public health impacts increase. Further research is needed to understand the response of  
11  
12 aeroallergens to climate change, to characterize their role in allergic disease development, and to estimate the costs to avoid or  
13  
14 minimize the health impacts of allergic diseases. Long-term data on aeroallergens are also needed to document changes in  
15  
16 aeroallergen production, to characterize their distribution, content, and potency, to model future potential impacts and to  
17  
18 identify potential high risk zones given current and forecasted climate change trends.  
19  
20

21 In summary, there are several key elements of research priorities regarding the public health impacts of climate change that  
22  
23 still need to be addressed at the scale of individual nations: (1) Identify and characterize communities and population sectors at  
24  
25 greatest risk to climate change and air pollution, including potential alterations in societal and behavioral responses; (2) Assess  
26  
27 the individual and synergistic impacts of air quality and climate change on human health of sensitive sub-populations (i.e.,  
28  
29 children, older citizens, women, immune-compromised persons); (3) Develop approaches to improve multi-disciplinary  
30  
31 assessments of the likelihood and effects of extreme weather events on human health; and (4) Identify and characterize what  
32  
33 would be the most likely impacts to coastal water quality and coastal community public health of SLR and coastal flooding.  
34  
35

## 36 **6. Threats to local economies and livelihood sustainability**

37  
38

39 Unlike any other disturbance experienced by contemporary societies, climate change has the potential to produce significant  
40  
41 impacts across very large temporal and spatial scales (Shea and Dyoulgerov 1997; Fankhauser et al. 1999; Marshall and  
42  
43 Johnson 2007), with significant adverse consequences on local economies and livelihoods, particularly, in small islands (Mills  
44  
45 et al., 2005; Lane et al., 2013). Many coastal communities and reef-based industries are likely to struggle to cope with a  
46  
47 challenge of this magnitude, with a very likely adverse impact to local economies and livelihood sustainability. Climate change  
48  
49 might have a significant impact on Caribbean tourism economy through the alteration of condition and scenic value of  
50  
51 environmental features important to destination selection (Uyarra et al., 2005; Hernández-Delgado et al., 2012). Vulnerable  
52  
53 people will need guidance and support to anticipate the impacts of climate change and implement adaptation strategies if they  
54  
55 are to sustain their livelihoods and quality of life into the future.  
56  
57  
58  
59  
60  
61  
62  
63  
64  
65

1 The combined long-term impacts of climate change, chronic coastal environmental degradation and ecosystem decline, and  
2 increased human vulnerability to diseases could have deleterious consequences for local economies as a result of coastal  
3 flooding, chronic declining coastal water quality, groundwater salinization, threatened food production, and collapsing tourism  
4 industry (Fig. 3). SLR, in combination with declining rainfall trends, has been shown to foster saline intrusion in groundwater,  
5 altering coastal vegetation (Greaver and Sternberg, 2010). This could result in an irreversible decline of goods and services of  
6 coastal vegetation barriers (i.e., vegetation role as buffer against coastal erosion, shoreline protection against SLR itself) and  
7 freshwater table (i.e., supporting other inland vegetation non-adapted to saltwater intrusion, crops). Declining coastal terrestrial  
8 and marine ecosystem benefits and services may also result in declining food production and starvation. This could be a critical  
9 concern in small islands which might largely depend upon food importation. The inability to feed the population, in  
10 combination with the prohibitive costs of engineering alternatives for shoreline erosion protection of urban areas, tourism  
11 facilities, and critical infrastructure along low-lying coastal areas (i.e., seaports, airports, highways, electric power stations,  
12 sewage treatment facilities, hospitals, schools, etc.) due to SLR, and in combination with expected increases in coastal pollution,  
13 in disease prevalence and in the cost of disease prevention or treatments could be unsustainable for many island nations. This  
14 could result in a major ecological collapse, combined with an unavoidable public health problem of unprecedented scale, and a  
15 potential unprecedented risk in food security (resulting in increased expenses in food importation) could also lead to an  
16 economic collapse, particularly in small islands with limited resources that may largely depend on tourism revenues. Magnified  
17 economic costs associated to increased health treatments to people, property insurance, migration from coastal to upland areas,  
18 if viable, or evacuation of the entire population from low-lying islands to adjacent larger islands or continents will also be a  
19 major source of socio-economic and political challenges and conflicts. Climate change adaptation planning must be completed  
20 as soon as possible and must consider long-term economic and livelihood impacts of all available alternatives, including the cost  
21 of migration, as well as the cost of doing nothing to abate impacts.

22  
23  
24  
25  
26  
27  
28  
29  
30  
31  
32  
33  
34  
35  
36  
37  
38  
39  
40  
41  
42  
43 The recovery and sustainability of livelihoods will rely in six basic elements, according to Plummer and Armitage (2007),  
44 including: (1) Increased well-being (i.e., improved socio-economic conditions at the individual/household level); (2) Decreased  
45 poverty; (3) Increased income; (4) Decreased vulnerability; (5) Increased food security; and (6) Sustainable resource use.  
46  
47  
48  
49  
50  
51  
52  
53  
54  
55  
56  
57  
58  
59  
60  
61  
62  
63  
64  
65

## 7. The enhanced vulnerability of small tropical islands: Case studies from the Caribbean and the Indo-Pacific

1 By nature, small tropical islands are highly vulnerable to climate change, SLR, and both to chronic and stochastic  
2 disturbances. Islands are often small, have limited human, economic and technical resources, and limited socio-economic  
3 resilience, but often constitute a significant tourism attraction (Jędrusik, 2004). Multiple islands, such as Puerto Rico, in the  
4 Caribbean (Hernández-Delgado et al., 2012) and the Maldives, in the Indian Ocean (Brown et al., 1997), are being also  
5 overexploited by massive tourism and non-sustainable development practices which have the potential to put on stake their  
6 limited natural resources, and putting on risk local economies and livelihoods due to revenue leakage (Hernández-Delgado et  
7 al., 2012). Such islands share a very fragile ecology and a high dependence on non-sustainable tourism, which often results in  
8 adverse environmental impacts (De Albuquerque and McElroy, 1992). Small Caribbean island states such as Bonaire and  
9 Barbados, which are strongly dependent on massive tourism, are much more vulnerable to climate change-related habitat  
10 decline, which are a strong factor attracting tourists (Urraya et al., 2005). Therefore, special attention must be paid to reduce  
11 rapid environmental decline of small islands' natural resources by reducing overexploitation and pollution, and by establishing  
12 sustainable development strategies.  
13  
14  
15  
16  
17  
18  
19  
20  
21  
22  
23  
24

25 Sustainable development across small islands can be constrained by the scarcity of natural resources, and by the quality and  
26 quantity of available human resources (Soliani and Rossi, 1992). Small islands are often significantly impacted by non-  
27 sustainable urban sprawling, which often results in tourism and residential construction on vulnerable habitats, and on the  
28 construction of steep unpaved roads which result in extensive soil erosion and sediment delivery to adjacent coastal waters.  
29 Examples of this have been documented across both, the U.S. Virgin Islands (MacDonald et al., 1997; Ramos-Scharrón, 2012)  
30 and Puerto Rico (Ramos-Scharrón et al., 2012, 2015). In addition, many Pacific tropical islands, such as Tonga, Fiji, Samoa,  
31 and Tuvalu are low-lying (<10 m above sea level), therefore entire populations can be at risk to rising seas during Spring tides  
32 and hurricanes, and to SLR (Mimura, 1999). Indo-Pacific islands across the Maldives, Tuvalu and the Marshall Islands which  
33 are mostly composed by coral sands are particularly vulnerable to SLR (Perry et al., 2011). These require immediate adaptive  
34 responses. The same can be said about multiple low lying islands in the Atlantic, including the Bahamas, a significant portion of  
35 Cuba and even the U.S. state of Florida. Multiple Caribbean small islands are also rapidly losing their first lines of defense  
36 against storm swells and SLR, their coral reefs (Hughes, 1994; Gardner et al., 2003, 2005; Coelho and Manfrino, 2007; Miller et  
37 al., 2009; Hernández-Pacheco et al., 2011). This could have significant long-term implications on ecosystem resilience,  
38 functions, benefits and services, and in the long-run could affect governance.  
39  
40  
41  
42  
43  
44  
45  
46  
47  
48  
49  
50  
51  
52  
53

54 Governance is a key component of the capacity of social-ecological systems to adapt and mitigate potential climate change  
55 impacts, in particular across small islands. Resilience, adaptability, and transformability determine the future trajectories of  
56 social-ecological systems. Also, institutional (Young, 2010) and migration dynamics as a result increasing environmental  
57  
58  
59  
60  
61  
62  
63  
64  
65

pressures (Warner, 2010) can significantly influence resilience, vulnerability and adaptation capacity. This is largely related to governance weakness and the challenges associated to migration conflicts. Walker et al. (2004) defined adaptability as the capacity of key players in the system to influence resilience, which in the context of a social-ecological system, is essentially the capacity to manage it. Transformability is the capacity to create a fundamentally new system when ecological, economic, or social structures make the existing system untenable (Walker et al., 2004). Trust and leadership were suggested as key elements for successful adaptability and transformability (Gunderson et al., 2006). But Abel et al. (2006) argued that excessive subsidization of local social-ecological systems can reduce their capacity to self-organize under changing conditions (i.e., climate change). Therefore, economic dependence on external resources may also become a major roadblock for successful adaptation and mitigation. On this context, Olsson et al. (2006) suggested important strategies to achieve change in social-ecological systems: (1) Reconceptualize issues (i.e., change strategies to address problems); (2) Generate and integrate a diversity of ideas (i.e., provide multi-stakeholder, multi-sectorial participatory opportunities to share viewpoints and solutions); (3) Communicate and engage with key individuals in different sectors (i.e., participatory processes engaging multiple sectors of society, including marginalized communities, are critical); (4) Move across levels of governance and politics (i.e., there is a need to expand the organizational scale of actions, from individual/household to regional/trans-national); (5) Promote and steward experimentation at smaller scales (i.e., test alternative adaptive and mitigation solution on local scales to show success); and (6) Promote novelty by combining different networks, experiences and social memories (i.e., improving participation to the widest number of society sectors possible will allow to address different strategies and solutions).

Small islands' economy can also be significantly susceptible to environmental disasters (Adrianto and Matsuda, 2002) and extreme weather events such as hurricanes (Scavia et al., 2002). This can be potentially exacerbated by a combination of geographic, socio-economic and environmental factors. Also, lack of governance flexibility and stability can be a roadblock to adaptation (Duit et al., 2010). Small island development states (41 in total) have made only a modest progress towards having all necessary tools to manage their coastal zone, land uses and resource management across a global scale (Walker, 2006). Tompkins et al. (2005) analyzed the vulnerability of the Caribbean Island of Anguilla to climate change. The following characteristics made Anguilla vulnerable to natural extreme hazards: (1) Reliance on primary exports (lack of food security); (2) Wide disparities on economic well-being among society sectors; (3) Limited development of physical and social infrastructure; (4) Poor land planning; and (5) Weak governance and public administration. Vulnerability to climate-related hazards is also related to (1) Small physical size (i.e., land use conflicts and intensity, limited natural resources); (2) Remoteness (i.e., high costs of importation, geopolitical dependence); (3) Environmental factors (i.e., vulnerability of coastal zone, exposed interior); (4) Poor disaster mitigation capacity (i.e., limited hazard forecasting ability); (5) Demographic limitations (i.e., limited human

capital, high per capita cost of infrastructure); and (6) Small economy (i.e., high dependence on external finance, small internal market, high dependence on natural resources, limited production capacity). These factors need to be targeted through a combination of adaptation and mitigation strategies. But several factors can potentially prevent many poor countries and small islands to achieve such goals. According to Sachs (2006), there are four critical factors that need to be assessed: (1) Extreme poverty (approximately 1 billion people still live in the planet struggling for their daily survival which often results in extreme environmental degradation and resource depletion); (2) Powerful vested interests (private for-profit interest outcompeting public sustainable interests; i.e., fisheries agreements made between islands such as Antigua, in the Caribbean Lesser Antilles, and Japan); (3) Global economic pressures (disproportionate economic growth of developed nations create unprecedented environmental pressures on poor countries and small island nations; massive tourism pressures on small islands; revenue leakage; lack of food security and sovereignty); and (4) Lack of scientific knowledge in the poorest countries (lack of governance, struggle to achieve the basic socio-economic growth; limited or lack of understanding complex interactions of climate change, environmental pollution, economic drivers, public health, and sustainable livelihoods). Together, these could become overwhelming factors that can severely limit the ability for successfully achieving adaptation and mitigation goals, which may require a combination of multi-level and multi-sectorial strategies, particularly on small island nations.

Moreno and Becken (2009) developed an assessment model for the vulnerability to hurricanes to beach ecosystems in Fiji, in the Southern Pacific, which focused on three different elements: (1) Dimensions of vulnerability (i.e., exposure, sensitivity, adaptive capacity); (2) Components of dimensions (i.e., Exposure will depend on hurricane risk and severity, local and tourism population, infrastructure vulnerability; Sensitivity will depend on beach characteristics, infrastructure conditions, tourist perceptions; Adaptive capacity will depend on management capacity, institutional support, access to financing); and (3) Measures of components. In this last context, exposure will depend in the intensity and frequency of hurricanes, location, population number, number of tourists, and the value of affected infrastructure and resources. Sensitivity will depend on topography, current coastal erosion rates, hurricane-proof infrastructure, and public perceptions. Adaptive capacity will depend on the effectiveness of early warning systems, investment into adaptation, technology deployed, marketing, and diversification.

Moreno and Becken (2009) also developed a similar assessment model for the vulnerability to massive coral bleaching in Fiji. Exposure will depend on ocean conditions (i.e., SST, SLR), reef conditions (i.e., location), and storms (i.e. frequency, intensity). Sensitivity will depend on reef conditions (i.e., protection of the reef, percent healthy reef, species present, diversity and extension) and tourist perceptions (i.e., tourists' densities and types, and reef preferences). Adaptive capacity will depend on institutional support (i.e., MPAs, conservation projects, research and monitoring projects), on managerial capacity (i.e., education, diversification of activities, carrying capacity, limits of acceptable change), and technological capacity (i.e., artificial

reefs). This suggests that adaptation and mitigation strategies for small tropical islands may also require target-specific approaches based on targeted and prioritized economic activities in order to maintain diversified livelihoods.

A final key element highly critical in small islands scenarios is community-based engagement. Under most marginalized islands and communities, top-down approaches can be perceived by local communities as outside impositions, often leading to rejection. But if communities are properly engaged in problem assessment, planning, decision-making processes, and implementation there would be a higher probability of success for adaptation and mitigation goals. Tompkins et al. (2005) listed six steps that were necessary in the Cayman Islands, Caribbean Sea, for successful adaptation to tropical storm risk. These included: (1) Making the mental link in citizens between hazard events, vulnerability and impacts; (2) Having important respected individuals taking responsibility for the issue; (3) Having respected individuals in the community persuading others to engage for the issue; (4) Forming small community-based groups of concerned individuals; (5) Pushing community-based groups for preparedness action in their areas; and (6) Forming a National Hurricane Committee. Key persons are fundamental as they provide leadership, trust, vision, meaning, and they help transform management organizations toward a learning environment (Folke et al., 2005). Community-based participation has been proved a key element necessary to gain local support for changes in public policy and management (McConney et al., 2003; Berkes, 2004), and would be fundamental for adaptation and mitigation strategies to be successful on small islands. Also, community-based management in Trinidad and Tobago was shown to enhance adaptive capacity in two ways: by building networks that are important for coping with extreme events and by retaining the resilience of the underpinning resources and ecological systems (Tompkins and Adger, 2004).

## **8. Recommendations for adaptation and mitigation strategies on small tropical islands**

Multiple strategies have been identified that can help improve governance, as well as the understanding of multiple thresholds and improving the likelihood of implementing successful adaptation and mitigation strategies to sustain and sustain and increase coastal ecosystem and human resilience. But adaptive capacity will largely depend on the level of wealth, needs, education level, infrastructure status, and vulnerability to hazards. In this context, most small tropical island nations are characterized by poor wealth, very high needs, limited to poor education, weak infrastructure conditions, and moderate to high vulnerability to climate-related hazards. The sustainable adaptability of coupled social-ecological systems will need to target multiple organizational levels of societies, including: (1) individual/household; (2) tribal/municipal; (3) national; and (4) regional/trans-national levels, and strategies need to be interconnected among all levels (Fig. 6). Individual and household socio-economic conditions can play an important role in influencing people's potential adaptation ability (Cinner et al., 2009). This may become particularly critical in island nations with poor governance. Challenges that need to be addressed at the individual/household



1 level include improving the socio-economic condition, maintenance of flexibility and assets, and of the ability to relocate,  
2 prevent the declining of livelihoods and socio-economic stability, avoid poverty traps, and establish a balance between short-  
3 term benefits and declining long-term resilience of couple social-ecological systems. Poverty traps are particularly critical as  
4 chronic declining socio-economic conditions may prevent poor people to maintain sufficient resources to overcome natural  
5 disaster, declining livelihoods and low income (Carter and Barrett, 2006).  
6  
7

8  
9  
10 Strategies are also needed at the tribal/municipal level, including the provision of local needs and services, fostering  
11 community-based organization and cooperative models, fostering the protection/recovery of livelihoods, the development and  
12 support of community-based coral farming and reef rehabilitation cooperatives, the establishment and support of fair commerce  
13 opportunities, and networking models with adjacent tribes/ municipalities (Fig. 6). Efforts would also be required at the national  
14 level in order to provide nationwide needs and services, infrastructure maintenance, modification and implement land use plans,  
15 establish alternative livelihood strategic plans, relocate vulnerable communities, implement adaptive agriculture and fishery  
16 management plans, integrated watershed-coastal management plans, and implement national programs to foster coral farming  
17 and reef rehabilitation, artificial reefs, and commercial fish and invertebrate mariculture. Efforts at the regional/trans-national  
18 level may include cooperative agreements among different countries, technical assistance to poor countries and small islands,  
19 low islands evacuation plans against SLR, fishing and food production cooperative agreements, and the development of regional  
20 alternative livelihoods strategic plans.  
21  
22  
23  
24  
25  
26  
27  
28  
29  
30  
31  
32

33  
34 Adaptation can provide short-term benefits, but it may have adverse long-term effects that may affect the resilience of social-  
35 ecological systems if chronic human-driven degradation of coastal ecosystems that function as first line of defense against storm  
36 swells and SLR is not reduced. In this context, the sustainable adaptability of the first line of defense and ecosystem services  
37 will need to focus on five interactive components: (1) SLR; (2) maintain coastal setbacks; (3) reforest coastal barriers; (4)  
38 rehabilitate shallow reef ecological functions and services; and (5) implement a strong management and marketing of perceived  
39 risks (Fig. 7). SLR adaptive strategies can be subdivided into retreat, adapt, and defend (Boko et al., 2007). Retreat may imply  
40 the relocation of vulnerable human communities and infrastructure, and the change and management of land uses. Adaptation  
41 may imply management of multiple components such as saltwater intrusion, reducing or eliminating sand and coral mining for  
42 construction material, delineating flood and erosion hazardous areas, rehabilitating sand dunes, and implementing strict controls  
43 on the overexploitation of coastal resources, population growth, and pollution. Defend imply the implementation of highly-  
44 expensive engineering solutions such as building seawalls, breakwaters, pillar housing, and raised foundations.  
45  
46  
47  
48  
49  
50  
51  
52  
53  
54  
55  
56  
57  
58  
59  
60  
61  
62  
63  
64  
65

1 Maintaining coastal setbacks changing and managing land uses to protect buffer zones, preserving areas for the expansion of  
2 wetlands under SLR, and the elimination of vulnerable structures (Fig. 7). Reforesting coastal barriers will imply restoring  
3 coastal forests and buffer zones, and the overall rehabilitation of coastal barrier ecosystems services. The rehabilitation of  
4 shallow coastal coral reefs will require the restoration of rapidly-growing coral populations, coral reef functions and services,  
5 the restoration of shallow reef net accretion rates, and the rehabilitation of reef landscapes and tourism attractiveness. The  
6 overall objective of these efforts would be to increase resilience to disturbance (i.e., recurrent or more intense hurricanes, SLR).  
7 The component of stronger management and marketing of perceived risk will require a “damage control” approach of public  
8 perceptions and will require public outreach through mass media, a stronger tourism management response, “damage control”  
9 perception management, a wider diversification of tourism products and market segments that may also diversify local  
10 livelihoods, adaptive pricing policies and adaptive regulatory structure, including taxes, subsidies, and economic incentives to  
11 businesses (McClanahan and Cinner, 2012). The integration of efforts to protect and restore the first line of defense against  
12 storm swells and SLR will be fundamental to foster enhanced benefits of adaptive strategies of coupled social-ecological  
13 systems across all of its organizational levels.  
14  
15  
16  
17  
18  
19  
20  
21  
22  
23  
24  
25  
26

27 One of the most critical elements for small island nations that require adaptive management strategies are fisheries. According  
28 to McClanahan and Cinner (2012), the sustainable adaptability of fisheries may require addressing seven key elements,  
29 including: (1) essential fish habitat (EFH) degradation; (2) changes in the spatio-temporal distribution of fisheries; (3) changes  
30 to yield; (4) damage to coastal infrastructure; (5) change to profitability; (6) influx of fishers from other areas; and (7) health  
31 and safety (Fig. 8). Small islands have limited surface areas for agriculture and livestock, and mostly rely on fishing and on  
32 expensive importation of food. Therefore, fishing should be a key component of climate change adaptation strategies. But  
33 special care must be taken to prevent short-term benefits to have adverse long-term effects that may affect the resilience of  
34 social-ecological systems. Under current scenarios of ecosystem overexploitation, climate change and SLR, fishers may rapidly  
35 benefit from the establishment of no-take marine protected areas (MPAs), shifting fishing grounds, changing gears and target  
36 species, increasing fishing efforts, but in combination with predicted climate change and SLR scenarios, in the long-term these  
37 strategies may have the potential to magnify depletion and magnify the tragedy of the commons effect, leading to major  
38 conflicts. Therefore, adaptive strategies need to incorporate social-ecological systems across all of its organizational levels,  
39 ecosystems that function as first line of defense along coastlines, and fisheries.  
40  
41  
42  
43  
44  
45  
46  
47  
48  
49  
50  
51  
52  
53

54 Adaptive strategies to cope with chronic EFH degradation may include reducing the loss of EFH due to chronic pollution, and  
55 managing habitat decline due to climate change and SLR by reducing other local anthropogenic stressors (i.e., fishing pressure,  
56 water quality decline, sedimentation). It will also require managing shallow coastal habitats decline due to *Sargassum* mats  
57  
58  
59  
60  
61  
62  
63  
64  
65

1 massive arrivals (i.e., Caribbean Sea), and rehabilitating EFH (i.e., water quality, coral reefs, seagrass, mangroves, estuaries) to  
2 recover ecosystem resilience, functions and services. Changes in the spatio-temporal distribution of fisheries will require  
3  
4 designating no-take MPA networks, changing and/or rotating the location of fishing activities, and the development of marine  
5  
6 fish open ocean cage aquaculture. Changes to yield will also require reducing fishing efforts across overexploited ecosystems,  
7  
8 diversification of livelihoods, reducing costs and increasing the efficiency of operations, changing fishing gears, fishery targets  
9  
10 or habitats, implementing fish aggregation devices (FADs) and artificial reefs, and protecting fish spawning aggregation sites.  
11  
12 Adaptive management of fisheries will require managing damage to coastal infrastructure. This will imply the rehabilitation and  
13  
14 response to disasters, implementing integrated coastal management strategies, the development of early warning systems, and  
15  
16 education across multiple levels. Changes to profitability from declining fisheries need to be managed by diversifying market  
17  
18 products and livelihoods, and by fostering aquaculture cooperative models. The influx of fishers from other areas may need to  
19  
20 be managed through the implementation of property rights to reduce potential social and political conflicts. Health and safety  
21  
22 challenges will require managing human communities retreat, establishing or downscaling weather warning systems, improving  
23  
24 vessel safety and stability, and by establishing early warning systems for awareness and disease outbreaks.  
25  
26

27 Variable strategies need to be implemented either before, during or after ecosystem thresholds are crossed. The most critical  
28  
29 challenge is to identify early warning signals of any major threshold change. But this might be one of the most complex  
30  
31 challenges as most ecosystem changes unfold at very slowly rates, rarely detectable to science, particularly in places which lack  
32  
33 appropriate technology and resources. It is also fundamental to rehabilitate coastal ecosystem resilience to slow down  
34  
35 progressive degradation and reducing the probability of rapidly crossing any threshold. This may require the designation of no-  
36  
37 take MPAs and the need to incorporate base communities and other local stakeholders into a participatory management or co-  
38  
39 management model of resource extractive activities (Cinner et al., 2009). Examples of such engagement already include  
40  
41 successful coral farming and coral reef rehabilitation efforts in support of local MPA management (Hernández-Delgado and  
42  
43 Suleimán-Ramos, 2014; Hernández-Delgado et al., 2014). This would virtually provide more time to coastal ecosystems to  
44  
45 recover from climate-related disturbance (Hughes et al., 2013a). But if strategies are to be implemented during or after  
46  
47 ecosystem thresholds are crossed it would be important to implement novel, alternative, and adaptive management strategies to  
48  
49 deal with alternate conditions, transient successional trajectories, and with cumulative and synergistic impacts on coastal and  
50  
51 marine ecosystems. This may imply further challenges such as unprecedented spatial, temporal and political scales of  
52  
53 management.  
54  
55

56 Natural resource conservation needs also to pay fundamental attention to critically threatened and endangered species,  
57  
58 endemic species, indicator/sentinel species, species that aggregate for reproduction, and highly migratory species that might  
59  
60  
61  
62  
63  
64  
65

1 require conservation efforts on global scales (Barber, 2004). There is also a need to conserve and restore viable representations  
2 of interconnected terrestrial, freshwater and marine ecosystems, habitats that constitute a source of freshwater, large non-  
3 fragmented landscapes, natural landscapes under major threats by urban sprawl and development, fish spawning aggregation  
4 sites, and critical habitats for sustaining viable populations of highly migratory species. Adaptive strategies for the conservation  
5 of biodiversity also need to be implemented, particularly in the form of ecosystem services and benefits (i.e., fish nursery  
6 grounds, natural coastal barriers, forest hydrological functions, wetlands buffering role, genetic diversity, food production,  
7 sources of natural products). There is also a need to protect and manage important socio-economic resources, such as fisheries,  
8 coastal croplands (i.e., coconut), grasslands (i.e., cattle farms), groundwater and other freshwater reservoirs. Further, there is a  
9 need to downscale climate models to provide more realistic simulations and prediction of basin-scale hydrology (Wilby et al.,  
10 2000) and to address the impacts of climate change on the small-scale spatial distribution of biodiversity, species, crop yields,  
11 and water resources (Tarbor and Williams, 2010). These approaches may require integrating new information from climate  
12 models, sensitivity analyses, and vulnerability assessments for species and ecosystems (Mawdsley, 2011), and the development  
13 of spatial planning policies and policy guidance which take account of climate change (Nadarajah and Rankin, 2005).

14  
15  
16  
17  
18  
19  
20  
21  
22  
23  
24  
25  
26  
27 Heller and Zavaleta (2009) thoroughly reviewed recommendations for biodiversity adaptive management in face of climate  
28 change and suggested that adaptation requires improved regional institutional coordination, expanded spatial and temporal  
29 perspective, incorporation of climate change scenarios into all planning and action, and greater effort to address multiple threats  
30 and global change drivers simultaneously in ways that are responsive to and inclusive of human communities. On that sense,  
31 adaptation will have to deal with unavoidable uncertainty about the future, always based on precautionary principles, and  
32 integrating multiple spatial scales of planning and management. It will also need to integrate into existing policies and  
33 programs, and will need to incorporate social sciences as the approach should be focused on managing coupled social-  
34 ecological ecosystems. This means, biodiversity conservation strategies need to stem out from community-based integrative and  
35 participatory processes. But the reality is that lack of proper human and economic resources may prevent multiple small tropical  
36 island nations to achieve such objectives. This is a major concern as it may potentially increase long-term climate risks for  
37 biodiversity and for the highly vulnerable groups that depend on it. Recent evidence has also shown unequivocal signs of global  
38 freshwater reservoir declines (Famiglietti, 2014). Therefore, strategies to improve water management efficiency (i.e., catchment,  
39 storage, distribution, leakages, wastewater treatment, water reclamation), natural groundwater recharge, and an improved ability  
40 to intercept and store rainfall at the household level are important adaptive measures, with particular urgency in small islands,  
41 arid environments, and across large geographic areas. This has become a critical element across the wider Caribbean region,  
42 where data suggest a steady decline in daily rainfall (Peterson et al., 2002), and where models suggest will become much drier  
43  
44  
45  
46  
47  
48  
49  
50  
51  
52  
53  
54  
55  
56  
57  
58  
59  
60  
61  
62  
63  
64  
65

1 in the near future (Neelin et al., 2006). It is also fundamental to include the ecological capital as part of socio-economic  
2 evaluations as it is usually poorly understood, difficult to measure and tends to be undervalued (Barbier, 2014). Therefore, the  
3 rapid depletion and degradation of natural resources need to be incorporated into economic indicators. This could allow  
4 improving socio-economic indicators of climate change impacts and improving estimates of climate change adaptation cost.  
5  
6

7  
8  
9 However, there are still other major, complex and highly challenging adaptive strategies which might require the need to  
10 relocate coastal communities highly vulnerable to SLR, develop and implement a food security and sovereignty plan, a plan to  
11 reduce, reuse and recycle solid wastes, and a multi-disciplinary educational plan for base communities regarding the  
12 environmental, socio-economic and public health implications of climate change. In addition, there is still a need to improve  
13 energy efficiency and to foster the development of renewable energy sources, improve and incentive public transportation, and  
14 to implement urban sustainability strategies. Such approaches might likely be unrealistic for many island nations with severe  
15 socio-economic limitations which may deem them to poverty traps, unless larger-scale, trans-boundary adaptive approaches are  
16 taken.  
17  
18  
19  
20  
21  
22  
23  
24  
25

26 There are also multiple mitigation strategies that need to be rapidly implemented, in particularly those that reduce carbon  
27 emissions or that naturally offset emissions. Nutrient and sediment loadings to estuarine and coastal waters need to be reduced  
28 now so that further water quality degradation is prevented. This would be a fundamental measure to reduce two of the most  
29 significant sources of anthropogenic stress on coastal ecosystems and should help maintaining coastal ecosystems productivity  
30 resilience, functions (i.e., carbon sequestration, nursery ground, buffer against wave action and coastal erosion), benefits, goods  
31 and services for a longer period of time. There is also a need to reforest natural and urban catchment areas, and to improve the  
32 sustainability of urban areas, including the conversion to green buildings, and to improve the management of water resources  
33 (i.e., improve interception, retention and infiltration, reduce runoff). Also, coral farming and reef rehabilitation will help not  
34 only to replenish depleted corals, but to rehabilitate shallow reef nursery grounds, restore reef value for tourism and recreation,  
35 its ability to produce fish protein, its role to protect shorelines, and offset carbon emissions.  
36  
37  
38  
39  
40  
41  
42  
43  
44  
45  
46

47 Climate change adaptation and mitigation strategies need also to be implemented in the context of public health at the base  
48 community level. Human vulnerability to any disaster, including those climate-related, has complex social, economic, health,  
49 and cultural dimensions. Simultaneous steps taken in agriculture, urban planning, water and civil defense, will have implications  
50 for prevention of illness and injury (Woodward et al., 2011). There is a definite major need to foster increased food security and  
51 sovereignty to reduce vulnerability to extreme events and poverty in the topics (Sánchez, 2000; Ziervogel and Ericksen, 2010;  
52 Chakraborty and Newton, 2011). Vulnerability to natural disasters has two sides: (1) susceptibility – the degree of exposure to  
53  
54  
55  
56  
57  
58  
59  
60  
61  
62  
63  
64  
65

dangerous hazards; and (2) resilience – the capacity to cope with or recover from disaster consequences (Keim, 2008).

According to this author, vulnerability reduction programs are important to reduce susceptibility and increase resilience. Susceptibility to disasters can be largely reduced by prevention and mitigation of emergencies, and emergency preparedness, response and recovery activities to increase disaster resilience. This means that local public health agencies have the direct responsibility to build human health resilience to climate-related disasters. But this requires ongoing, progressive assessment and action, not a one-time assessment of risks and interventions (Ebi and Semenza, 2008). Further, it will require integrated approaches, from regional or trans-national to individual/household level.

But maybe the most critical concern regarding climate change adaptation and mitigation in small tropical developing nations is largely economic (Stage, 2010). Those countries least causally responsible for climate change, such as small island nations, are predicted to suffer the most from climate impacts (Hartzel-Nicholls, 2011). Costs and benefits of climate change adaptation in developing nations, beyond economic and climate science, need to incorporate behavioral science, and legal and moral aspects (Stage, 2010). Lack of government capacity or their unwillingness to address the infrastructure and service needs of their low-income populations would also represent another roadblock to adaptation (Satterthwaite, 2011). Finally, there is still a view in many government institutions that biodiversity conservation contradicts socio-economic development. Nonetheless, there is a paramount need to link biodiversity conservation, community-based livelihoods, and food security to foster climate change adaptation (Mainka and Triverdi, 2002), and sustainable socio-economic growth.

To achieve these and many other strategies there is still a need to build awareness across different sectors of society. There is also a need to translate information about research on climate change impact needs into language and time scales relevant for high-level and sectorial policy makers, planners and managers (Huq et al., 2003). It is fundamental to educate and engage all relevant stakeholders, particularly the most vulnerable sectors of society (i.e., marginal communities, human settlements along coastal areas and floodplains, women), and to connect national and international experts and researchers with decision makers on the ground (Marshall et al., 2010). Special attention must be paid to the most vulnerable regions and populations within each country (i.e., indigenous people, older citizens, women and children) to strengthen strategies for improving negotiating capacities and seeking major funders, and to build long-term national adaptive or mitigating capacity. This implies the integration of global climate change into bottom-up and place-based efforts to engage base communities into adaptive practices (van Aalst et al., 2008). Community-based participation is crucial to foster engagement of vulnerable groups in assessing temporal trends in climate risks, to address vulnerability reduction, and to discuss, plan, design and implement solutions. This suggests the need to translate climate information to the community level, to incorporate traditional ecological knowledge and cultural heritage, and address community-based risks and needs. However, to be effective, outsiders must first gain the trust of

1 the communities they want to help (Huq and Reid, 2007). It is also fundamental to respect indigenous people's rights and  
2 traditions (ILRC, 2014). Such information should then be incorporated to national, regional and global strategies.  
3

## 4 **9. Conclusions**

5  
6  
7 Climate change has caused major unprecedented impacts across many coastal tropical ecosystems, on public health, and on  
8 local economies and community livelihoods. The magnitude of such impacts may become more pronounced for developing  
9 nations in the near future. Preparing and adapting for climate change can be challenging, particularly for small island nations.  
10 The nature and severity of impacts are likely to vary from place to place and across economic sectors, and also across society  
11 organizational scales, from individual/household to regional/trans-national scales. In addition to the effects on depleted tropical  
12 marine resources, coastal resource users will also be subjected to institutional and regulatory changes and challenges. For  
13 example, regulations to reduce fishing effort (such as gear restrictions, temporary closures, fishing quotas, and the designation  
14 of no-take MPAs have already being introduced specifically to increase reef resilience to climate change (Salm and Coles, 2001;  
15 Miththapala, 2008). But even though no-take MPAs support higher fish biomass than adjacent areas open to fishing, they have  
16 no significant effect on the ecosystem response to large-scale climate-related disturbance, further suggesting that adaptive  
17 management of climate change-related impacts will have to occur on unprecedented spatial, multi-national scales (Graham et  
18 al., 2009).  
19  
20  
21  
22  
23  
24  
25  
26  
27  
28  
29  
30

31  
32 Best case scenarios may arise if we can keep ATM CO<sub>2</sub> concentration below 450 ppm and increase our efforts to build the  
33 ecological resilience of coral reefs and other associated coastal ecosystems which function as first lines of defense against storm  
34 swells and SLR, as well as motors of community-based livelihoods and local economies. There is absolutely a need to reduce  
35 the impact of other environmental stresses, such as pollution, sedimentation, overexploitation, destructive fishing practices, and  
36 non-sustainable land uses. Worst-case scenarios may arise if we do not take immediate and imperative stern action on  
37 emissions. Even under scenarios way beyond 450 ppm, extensive coral reef ecosystems are being lost in the rapidly warming  
38 and acidifying seas. Similarly, marine-based food webs are being impacted by ocean acidification and fishing exploitation, with  
39 a resulting loss in biodiversity, biomass, food web shrinking, and declining productivity. Also, major ecological changes are  
40 occurring across terrestrial landscapes and freshwater ecosystems with paramount direct and indirect effects on biodiversity,  
41 ecosystem functions, resilience, water availability, and on food security and sovereignty. But even under such an obscure  
42 panorama, there are still plenty of opportunities for adaptation.  
43  
44  
45  
46  
47  
48  
49  
50  
51  
52  
53  
54

55  
56 There are multiple fundamental strategies for the sustainable adaptability of coupled social-ecological systems across multiple  
57 societal organizational scales, of coastal ecosystems that function as first lines of defense against storm swells and SLR, and  
58  
59  
60  
61  
62  
63  
64  
65

1 fisheries that can still be implemented to gain extra time to reduce potential impacts by climate change and SLR. There are also  
2 opportunities to foster a reduction in public health risks and to improve food security and sovereignty. This has to pay particular  
3 emphasis on the most vulnerable sectors of society. Given the trend of increasing global stress on tropical coastal ecosystems, it  
4 has become increasingly important to reduce the impact of other human stresses on coastal ecosystems, freshwater and  
5 groundwater resources, and on food production. But this alone, will not be enough to save small tropical island ecosystems,  
6 their resilience, productivity and tourism economic value if we do not reduce our greenhouse gas emissions, particularly that of  
7 CO<sub>2</sub>. If adaptive action is not rapidly taken, the future of small tropical island nations might be at a very high risk in the near  
8 future.  
9

10 Our generation has the unprecedented challenge of lifting people out of poverty, advancing economic growth through  
11 sustainable socio-economic models, and conserving and rehabilitating rapidly declining natural resources. To achieve this we  
12 must connect the links among declining natural resources, biodiversity, productivity, natural resources value, food security and  
13 sovereignty, public health, local economy, the long-term erosion of traditional livelihoods, water scarcity, energy shortages,  
14 increased globalized economic pressures, women's empowerment, and the combined impacts of local human stressors and  
15 climate change. Solutions must transcend the typical focus on individual problems and must be solutions for all. There is still  
16 time to take action before it becomes too late.  
17

## 18 **10. Acknowledgments**

19 This publication was possible thanks to the support of the National Science Foundation (HRD #0734826) to the Center for  
20 Applied Tropical Ecology and Conservation, as well as by the support provided by the University of Puerto Rico Central  
21 Administration.  
22

## 23 **11. References**

- 24 Abel, N., Cumming, D.H., & Anderies, J.M., 2006. Collapse and reorganization in social-ecological systems: questions, some  
25 ideas, and policy implications. *Ecology and Society*, 11, 17.
- 26 Adger, W.N., Arnell, N.W., Tompkins, E.L., 2005a. Successful adaptation to climate change across scales. *Global*  
27 *Environmental Change* 15, 77-86.
- 28 Adger, W.N., Hughes, T.P., Folke, C., Carpenter, S.R., Rockström, 2005b. Social-ecological resilience to coastal disasters.  
29 *Science* 309, 1036-1039.



- Adrianto, L., Matsuda, Y., 2002. Developing economic vulnerability indices of environmental disasters in small island regions. *Environmental Impact Assessment Review* 22, 393-414.
- Alemu, J.B., Clement, Y., 2014. Mass coral bleaching in 2010 in the Southern Caribbean. *PloS One* 9, e83829, 1-8.
- Alley, R.B., Marotzke, J., Nordhaus, W.D., Overpeck, J.T., Peteet, D.M., Pielke, Jr., R.A., Pierrehumbert, R.T., Rhine, P.B., Stocker, T.F., Talley, L.D., Wallace, J.M., 2005. Abrupt climate change. *Science* 299, 2005-2010.
- Andronova, N.G., Schlesinger, M.E., 2000. Causes of global temperature changes during the 19<sup>th</sup> and 20<sup>th</sup> centuries. *Geophysical Research Letters*, 27, 2137-2140.
- Anthes, R.A., Corell, R.W., Holland, G., Hurrell, J.W., MacCracken, M.C., Trenberth, K.E., 2006. Hurricanes and global warming-Potential linkages and consequences. *Bulletin of the American Meteorological Society*, 87, 623-6
- Anthony, K.R.N., Maynard, J.A., Díaz-Pulido, G., Mumby, P.J., Marshall, P.A., Cao, L., Hoegh-Guldberg, O., 2011. Ocean acidification and warming will lower coral reef resilience. *Global Change Biology* 17, 1798-1808.
- Aronson, R.B., Precht, W.F., 2001. White-band disease and the changing face of Caribbean coral reefs. *Hydrobiologia* 460, 25-38.
- Aronson, R.B., Precht, W.F., Toscano, M.A., Koltjes, K.H., 2002. The 1998 bleaching event and its aftermath on a coral reef in Belize. *Marine Biology* 141, 435-447.
- Baker, A.C., Glynn, P.W., Riegl, B., 2008. Climate change and coral reef bleaching: An ecological assessment of long-term impacts, recovery trends and future outlook. *Estuary, Coastal and Shelf Science* 80, 435-471.
- Barber, C.V., 2004. Designing protected area systems for a changing world, in C.V. Barber, K.R. Miller, and M. Bonness (eds.), *Securing Protected Areas in the Face of Global Change: Issues and Strategies*, IUCN, Gland, Switzerland and Cambridge, UK., pp. xxxiii + 1-236.
- Barbier, F.B., 2014. Account for depreciation of natural capital. *Nature* 515, 32-33.
- Barnett, J., 2001. Security and climate change. *Tyndall Centre Working Paper No. 7*, 1-17.
- Barnett, J., & Adger, W.N., 2003. Climate dangers and atoll countries. *Climatic Change* 61, 321-337.
- Barnett, J., & Adger, W.N., 2007. Climate change, human security and violent conflict. *Political Geography* 26, 639-655.
- Barrett, J.R., 2012. Migration associated with climate change: Modern face of an ancient phenomenon. *Environmental Health Perspectives* 120, A205.
- Barton, A.D., Greene, C.H., Monger, B.C., Pershing, A.J., 2003. The Continuous Plankton Recorder survey and the North Atlantic Oscillation: interannual-to multidecadal-scale patterns of phytoplankton variability in the North Atlantic Ocean. *Progress in Oceanography* 58, 337-358.

- 1 Beck, J.W., Récy, J., Taylor, F., Edwards, R.L., Cabioch, G., 1997. Abrupt changes in early Holocene tropical sea surface  
2 temperature derived from coral records. *Nature* 385, 705-707.
- 3
- 4 Beggs, P.J., Bambrick, H.J., 2006. Is the global rise of asthma an early impact of anthropogenic climate change? *Ciência &*  
5 *Saúde Coletiva*, 11, 745-752.
- 6
- 7
- 8 Behrenfeld, M.J., O'Malley, R.T., Siegel, D.A., McClain, C.R., Sarmiento, J.L., Feldman, G.C., Milligan, A.J., Falkowski, P.G.,  
9  
10 Letelier, R.M., Boss, E.S., 2006. Climate-driven trends in contemporary ocean productivity. *Nature* 444, 752-755.
- 11
- 12 Bellard, C., Bertelsmeier, C., Leadley, P., Thuiller, W., Courchamp, F., 2012. Impacts of climate change on the future of  
13  
14 biodiversity. *Ecology Letters* 15, 365-377.
- 15
- 16 Berkes, F., 2004. Rethinking community-based conservation. *Conservation Biology* 18, 621-630.
- 17
- 18 Bender, M.A., Knutson, T.R., Tuleya, R.E., Sirutis, J.J., Vecchi, G.A., Garner, S.T., Held, I.M., 2010. Modeled impact of  
19  
20 anthropogenic warming on the frequency of intense Atlantic hurricanes. *Science* 327, 454-458.
- 21
- 22 Bernard, S.M., Samet, J.M., Grambsch, A., Ebi, K.L., Romieu, I., 2001. The potential impacts of climate variability and change  
23  
24 on air pollution-related health effects in the United States. *Environmental Health Perspectives* 109 (suppl 2), 199-209.
- 25
- 26 Bettini, G., Andersson, E., 2014. Sand waves and human tides: exploring environmental myths on desertification and climate-  
27  
28 induced migration. *The Journal of Environment & Development* 23, 160-185.
- 29
- 30 Black, D.E., Peterson, L.C., Overpeck, J.T., Kaplan, A., Evans, M.N., Kashgarian, M., 1999. Eight centuries of North Atlantic  
31  
32 ocean atmosphere variability. *Science* 286, 1709-1713.
- 33
- 34 Boko, M., Niang, I., Nyong, A., Vogel, C., Githeko, A., Medany, M., Osman-Elasha, R., Tabo, R., Yanda, P., 2007. Africa,  
35  
36 pp.433-467, in Parry, M., Canziani, O.,Palutiko, J., van der Linden, P., Hanson, C. (eds.), *Climate Change 2007: Impacts,*  
37  
38 *Adaptation and Vulnerability. Contribution of Working Group II to the Fourth Assessment Report of the*  
39  
40 *Intergovernmental Panel on Climate Change*, Cambridge University Press, Cambridge, UK.
- 41
- 42 Bonan, G.B., 2008. Forests and climate change: Forcings, feedbacks, and the climate benefits of forests . *Science* 320, 1444-  
43  
44 1449.
- 45
- 46 Bonkosky, M., Hernández-Delgado. E.A., Sandoz, B., Robledo, I.E., Norat-Ramírez, J., Mattei, H., 2009. Detection of spatial  
47  
48 fluctuations of non-point source fecal pollution in coral reef surrounding waters in southwestern Puerto Rico using PCR-  
49  
50 based assays. *Marine Pollution Bulletin* 58, 45-54.
- 51
- 52
- 53 Bosello, F., Roson, R., Tol, R.S.J., 2005. Economy-wide estimates of the implications of climate change: human health. *Nota di*  
54  
55 *Lavoro 97.2005*, Fondazione Eni Enrico Mattei, Milano, Italia, pp. 1-19.
- 56
- 57 Boyce, D.G., Lewis, M.R., Worm, B., 2010. Global phytoplankton decline over the past century. *Nature* 466, 591-596.
- 58  
59  
60  
61  
62  
63  
64  
65

- 1 Brandt, M.E., 2009. The effect of species and colony size on the bleaching response of reef-building corals in the Florida Keys  
2 during the 2005 mass bleaching event. *Coral Reefs* 28, 911-924.
- 3
- 4 Brauch, H.G. 2006. Desertification and migration. From Almeria I to Almeria II: Achievements and policy tasks. In Address  
5 and paper for the International Symposium Desertification and Migration Almeria, Spain, 25-27.
- 6
- 7
- 8 Brodeur, R.D., Mills, C.E., Overland, J.E., Walters, G.E., Schumacher, J.D., 1999. Evidence for a substantial increase in  
9 gelatinous zooplankton in the Bering Sea, with possible links to climate change. *Fisheries Oceanography* 8, 296-306.
- 10
- 11
- 12 Brown, K., Turner, R.K., Hameed, H., Bateman, I.A.N., 1997. Environmental carrying capacity and tourism development in the  
13 Maldives and Nepal. *Environmental Conservation* 24, 316-325.
- 14
- 15
- 16 Buddemeier, R.W., Kleypas, J.A., Aronson, R.B., 2004. Coral reefs and global climate change. Pew Center for Global Climate  
17 Change, Arlington, VA, 1-44.
- 18
- 19
- 20 Buddemeier, R.W., Jokiel, P.L., Zimmerman, K.M., Lane, D.R., Carey, J.M., Bohling, G.C., Martinich, J.A., 2008. A modeling  
21 tool to evaluate regional coral reef responses to changes in climate and ocean chemistry. *Limnology and Oceanography*:  
22 *Methods*. 6, 395-411.
- 23
- 24
- 25
- 26 Buddemeier, R.W., Lane, D.R., Martinich, J.A., 2010. Modeling regional coral reef responses to global warming and changes in  
27 ocean chemistry: Caribbean case study. *Climatic Change* 109, 375-397.
- 28
- 29
- 30 Büntgen, U., Tegel, W., Nicolussi, K., McCormick, M., Frank, D., Trouet, V., Kaplan, J.O., Herzig, F., Heussner, K.-U.,  
31 Wanner, H., Luterbacher, J., Esper, J., 2011. 2500 years of European climate variability and human susceptibility. *Science*  
32 331, 578-582.
- 33
- 34
- 35
- 36 Burge, C.A., Eakin, C.M., Friedman, C.S., Froelich, B., Hershberger, P.K., Hofmann, E.E., Peters, L.E., Prager, K.C., Weil, E.,  
37 Willis, B.L., Ford, S.E., Harvell, C.D., 2014. Climate change influences on marine infectious diseases: Implications for  
38 management and society. *Annual Reviews of Marine Science* 6, 1.1-1.29.
- 39
- 40
- 41
- 42 Burke, L., Spalding, M., 2011. *Reefs at risk*. World Resources Institute, Washington, DC.,
- 43
- 44 Cane, M.A., Clement, A.C., Kaplan, A., Kushnir, Y., Pozdnyakov, D., Seager, R., Zebiak, S.E., Murtugudde, R., 1997.  
45 Twentieth-century sea surface temperature trends. *Science* 275, 957-960.
- 46
- 47
- 48 Cannon, T. 2002. Gender and climate hazards in Bangladesh. *Gender and Development* 10, 45-50.
- 49
- 50
- 51 Carter, M., Barrett, C., 2006. The economics of poverty traps and persistent poverty: an asset-based approach. *Journal of*  
52 *Development Studies* 42, 178-199.
- 53
- 54
- 55 Cesar, H., Burke, L., Pet-Soede, L., 2003. *The economics of worldwide coral reef degradation*. World Wildlife Fund, Zeist, The  
56 Netherlands, 1-23.
- 57
- 58
- 59 Chakraborty S., Newton, A.C., 2011. Climate change, plant diseases and food security: overview. *Plant Pathology* 60, 2-14.
- 60
- 61
- 62
- 63
- 64
- 65

- 1  
2 Cheung, W.W., Lam, V.W., Sarmiento, J.L., Kearney, K., Watson, R.E.G., Zeller, D., Pauly, D., 2010. Large-scale  
3 redistribution of maximum fisheries catch potential in the global ocean under climate change. *Global Change Biology*, 16,  
4 24-35.  
5  
6 Chindarkar, N., 2012. Gender and climate change-induced migration: proposing a framework for analysis. *Environmental*  
7  
8 *Research Letters* 7, 1-7.  
9  
10 Cinner, J.E., McClanahan, T.R., Graham, N.A.J., Pratchett, M.S., Wilson, S.K., Raina, J.B., 2009. Gear-based fisheries  
11  
12 management as a potential adaptive response to climate change and coral mortality. *Journal of Applied Ecology*, 46, 724-  
13  
14 732.  
15  
16 Cinner, J.E., Folke, C., Daw, T., Hicks, C.C., 2011. Responding to change: Using scenarios to understand how socioeconomic  
17  
18 factors may influence amplifying or dampening exploitation feedbacks among Tanzanian fishers. *Global Environmental*  
19  
20 *Change* 21, 7-12.  
21  
22 Cinner, J.E., McClanahan, T.R., Graham, N.A.J., Daw, T.M., Maina, J., Stead, S.M., Wamukota, A., Brown, K., Bodin, Ö.,  
23  
24 2012. Vulnerability of coastal communities to key impacts of climate change on coral reef fisheries. *Global Environmental*  
25  
26 *Change* 22, 12-20.  
27  
28 Climate Change Science Program [CCSP], 2009. Coastal Sensitivity to Sea-Level Rise: A Focus on the Mid-Atlantic Region, A  
29  
30 report by the U.S. Climate Change Science Program and the Subcommittee on Global Change Research, U.S.  
31  
32 Environmental Protection Agency, Washington D.C., USA, 1-320.  
33  
34 Coelho, V.R., Manfrino, C., 2007. Coral community decline at a remote Caribbean island: marine no-take reserves are not  
35  
36 enough. *Aquatic Conservation: Marine and Freshwater Ecosystems* 17, 666-685.  
37  
38 Cloern, J.E., 2001. Our evolving conceptual model of the coastal eutrophication problem. *Marine Ecology Progress Series* 210,  
39  
40 223-253.  
41  
42 Colwell, R., 2008, The marine environment and human health: The cholera model. 109-116, In, D.A. Relman, M.A. Hambyrg,  
43  
44 E.R. Choffness, and A. Mack (eds.), *Global Climate Change and Extreme Weather Events: Understanding the*  
45  
46 *Contributions to Infectious Disease Emergence: Workshop Summary*, National Academy of Science, 1-304.  
47  
48 Comrie, A., 2007. Climate change and human health. *Geography Compass* 1/3, 325-339.  
49  
50 Conservation International, 2008. *Economic Values of Coral Reefs, Mangroves, and Seagrasses: A Global Compilation*. Center  
51  
52 for Applied Biodiversity Science, Conservation International, Arlington, VA, USA, 1-35.  
53  
54 Costa, D., 2011. Air quality in a changing climate. *Environmental Health Perspectives* 119, A154-A155.  
55  
56  
57  
58  
59  
60  
61  
62  
63  
64  
65

- 1  
2 Costanza, R., d'Arge, R., de Groot, R., Farber, S., Grasso, M., Hannon, B., Limburg, K., Naeem, S., O'Neill, R.V., Paruelo, J.,  
3 Raskin, R.G., Sutton, P., van der Belt, M., 1997. The value of the world's ecosystem services and natural capital. *Nature*  
4 387, 253-260.
- 5  
6 Costanza, R., de Groot, R., Sutton, P., van der Ploeg, S., Anderson, S.J., Kubiszewski, I., Farber, S., Turner, R.K., 2014.  
7 Changes in the global value of ecosystem services. *Global Environmental Change* 26, 152-158.
- 8  
9  
10 Costello, A., Abbas, M., Allen, A., Ball, S., Bell, S., Bellamy, R., Friel, S., Groce, N., Johnson, A., Kett, M., Lee, M., Levy, C.,  
11 Maslin, M., McCoy, D., McGuire, B., Montgomery, H., Napier, D., Pagel, C., Patel, J., Puppim de Oliveira, J.A., Redcliff,  
12 N., Rees, H., Rogger, D., Scott, J., Stephenson, J., Twigg, J., Wolff, J., Patterson, C., 2009. Managing the health effects of  
13 climate change: lancet and University College London Institute for Global Health Commission. *The Lancet* 373, 1693-  
14 1733.
- 15  
16  
17  
18  
19  
20 Cowen, R.K., Paris, C.B., Olson, D.B., Fortuna, J.L. 2003. The role of long distance dispersal versus local retention in  
21 replenishing marine populations. *Gulf and Caribbean Research Supplement* 14, 129-138.
- 22  
23  
24 Cowen, R.K., Paris, C.B., Srinivasan, A., 2006. Scaling of connectivity in marine populations. *Science* 311, 522-527.
- 25  
26 Craig, M.H., Kleinshmidt, I., Nawn, J.B., Le Sueur, D., Sharp, B.L., 2004. Exploring 30 years of malaria case data in KwaZulu-  
27 Natal, South Africa: Part I. The impact of climatic factors. *Tropical Medicine International Health* 9, 1247-1257.
- 28  
29  
30 Cruciani, F., Trombetta, B., Sellitto, D., Massaia, A., Destro-Bisol, G., Watson, E., Colomb, E.B., Dugoujon, J.M., Moral, P.,  
31 Scozzari, R., 2010. Human Y chromosome haplogroup R-V88: a paternal genetic record of early mid Holocene trans-  
32 Saharan connections and the spread of Chadic languages. *European Journal of Human Genetics* 18, 800-807.
- 33  
34  
35  
36 D'amato, G., Cecchi, L., D'amato, M., Liccardi, G., 2010. Urban air pollution and climate change as environmental risk factors  
37 of respiratory allergy: an update. *Journal of Investigational Allergology and Clinical Immunology* 20, 95-102.
- 38  
39  
40 Davis, M.B., Shaw, R.G., 2001. Range shifts and adaptive responses to Quaternary climate change. *Science* 292, 673-679.
- 41  
42 De Albuquerque, K., McElroy, J.L., 1992. Caribbean small-island tourism styles and sustainable strategies. *Environmental*  
43 *Management* 16, 619-632.
- 44  
45  
46 de Gruijl, F.R., Longstreth, J., Norval, M., Cullen, A.P., Slaper, H., Kripke, M.L., Takizawa, Y., van der Leun, J.C., 2003.  
47 Health effects from stratospheric ozone depletion and interactions with climate change. *Photochemical & Photobiological*  
48 *Sciences* 2, 16-28.
- 49  
50  
51  
52 De Vries, E., De Poll-Franse, V., Louwman, W.J., De Gruijl, F.R., Coebergh, J.W.W., 2005. Predictions of skin cancer  
53 incidence in the Netherlands up to 2015. *British Journal of Dermatology* 152, 481-488.
- 54  
55  
56 De'ath, G., Fabricius, K.E., Sweatman, H., Puotinen, M., 2012. The 27-year decline of coral cover on the Great Barrier Reef  
57 and its causes. *Proceedings of the National Academy of Sciences, USA* 109, 19035-19036.
- 58  
59  
60  
61  
62  
63  
64  
65

- Delworth, T.L., Knutson, T.R., 2000. Simulation of early 20<sup>th</sup> century global warming. *Science* 287, 2246-2250.
- Deser, C., Blackmon, M.L., 1993. Surface climate variations over the North Atlantic Ocean during winter: 1900-1989. *Journal of Climate* 6, 1743-1753.
- Díaz, H.F., Hoerling, M.P., Eischeid, J.K., 2001. ENSO variability, teleconnections and climate change. *International Journal of Climatology* 21, 1845-1862.
- Díaz, J.H., 2006. Global climate changes, natural disasters, and travel health risks. *Journal of Travel Medicine* 13, 361-372.
- Diaz, R.J., Rosenberg, R. 2008. Spreading dead zones and consequences for marine ecosystems. *Science* 321, 926-929.
- Díaz-Ortega, G., Hernández-Delgado, E.A., 2014. Land-based source pollution in a climate of change: A roadblock to the conservation and recovery of Elkhorn coral *Acropora palmata* (Lamarck 1816). *Natural Resources* 5, 561-581.
- DiDonato, G.T., Stewart, J.R., Sanger, D.M., Robinson, B.J., Thompson, B.C., Holland, A.F., Van Dolah, R.F., 2009. Effects of changing land use on the microbial water quality of tidal creeks. *Marine Pollution Bulletin* 58, 97-106.
- Doney, S.C., Ruckelshaus, M., Duffy, J.E., Barry, J.P., Chan, F., English, C.A., Galindo, H.M. Grebmeier, J.M., Hollowed, A.B., Knowlton, N., Polovina, J., Rabalais, N., Sydeman, W.J., Talley, L.D., 2012. Climate change impacts on marine ecosystems. *Annual Review of Marine Science* 4, 11-37.
- Duit, A., Galaz, V., Eckerberg, K., Ebbesson, J., 2010. Governance, complexity, and resilience. *Global Environmental Change* 20, 363-368.
- Dupont, S., Ortega-Martínez, O., Thorndyke, M., 2010. Impact of near-future ocean acidification on echinoderms. *Ecotoxicology* 19, 449-462.
- Eakin, C.M., Morgan, J.A., Smith, T.B., Liu, G., Alvarez-Filip, L., Baca, B., Bouchon, C., Brandt, M., Bruckner, A., Cameron, A., Carr, L., Chiappone, M., James, M., Crabbe, C., Day, O., de la Guardia-Llanso, E., DiResta, D., Gilliam, D., Ginsburg, R., Gore, S., Guzmán, H., Hernández-Delgado, E.A., Husain, E., Jeffrey, C., Jones, R., Jordán-Dahlgren, E., Kramer, P., Lang, J., Lirman, D., Mallela, J., Manfrino, C., Maréchal, J.P., Mihaly, J., Miller, J., Mueller, E., Muller, E., Noordeloos, M., Oxenford, H., Ponce-Taylor, D., Quinn, N., Ritchie, K., Rodríguez, S., Rodríguez-Ramírez, A., Romano, S., Samhour, J., Schmahl, G., Steiner, S., Taylor, M., Walsh, S., Weil, E., Williams, E., 2010. Caribbean corals in crisis: Record thermal stress, bleaching and mortality in 2005. *Plos One* 5(11): e13969, 1-10.
- Easterling, D.R., Meehl, G.A., Parmesan, C., Changnon, S.A., Karl, T.R., & Mearns, L.O., 2000. Climate extremes: observations, modeling, and impacts. *Science* 289, 2068-2074.
- Ebi, K.L., Semenza, J.C., 2008. Community-based adaptation to the health impacts of climate change. *American Journal of Preventive Medicine* 35, 501-507.

- 1  
2 949-957.  
3  
4 Elsner, J.B., 2006. Evidence in support of the climate change-Atlantic hurricane hypothesis. *Geophysical Research Letters* 33,  
5  
6 L16705, 1-3.  
7  
8 Emanuel, K., 2005. Increasing destructiveness of tropical cyclones over the past 30 years. *Nature* 436, 686-688.  
9  
10 Emerton, L., 2006. Counting coastal ecosystems as an economic part of development infrastructure, *Ecosystems and*  
11  
12 *Livelihoods Group Asia*, World Conservation Union (IUCN), Colombo, Sri Lanka, 1-11.  
13  
14 Epstein, P.R., 2007. Editorial – Chikungunya fever resurgence and global warming. *American Journal of Tropical Hygiene* 76,  
15  
16 403-404.  
17  
18 Epstein, P.R., 2008. Climate change and human health, 74-78, In, D.A. Relman, M.A. Hambyrg, E.R. Choffness, and A. Mack  
19  
20 (eds.), *Global Climate Change and Extreme Weather Events: Understanding the Contributions to Infectious Disease*  
21  
22 *Emergence: Workshop Summary*, National Academy of Science, 1-304.  
23  
24 Epstein, P.R., Mills, E., Frith, K., Linden, E., Thomas, B., Weireter, R. (eds.), 2005. Climate change futures: health, ecological  
25  
26 and economic dimensions. In, *Climate change futures: Health, ecological and economic dimensions*. Center for Health and  
27  
28 the Global Environment, Harvard Medical School, Boston, MA.  
29  
30 Erftemeijer, P.L.A., Lewis III, R.R.R., 2006. Environmental impacts of dredging on seagrasses: A review. *Marine Pollution*  
31  
32 *Bulletin* 52, 1553-1572.  
33  
34 Fabricius, K.E., McCorry, D., 2006. Changes in octocoral communities and benthic cover along a water quality gradient in the  
35  
36 reefs of Hong Kong. *Marine Pollution Bulletin* 52, 22-33.  
37  
38 Famiglietti, J.S. 2014. The global groundwater crisis. *Nature Climate Change* 4, 945-948.  
39  
40 Fankhauser, S., Smith, J.B., Tol, R.S., 1999. Weathering climate change: some simple rules to guide adaptation decisions.  
41  
42 *Ecological Economics* 30, 67-78.  
43  
44 Fitzpatrick, S.M., Donaldson, T.J., 2007. Anthropogenic impacts to coral reefs in Palau, western Micronesia during the Late  
45  
46 Holocene. *Coral Reefs* 26, 915-930.  
47  
48 Folke, C., Hahn, T., Olsson, P., Norberg, J., 2005. Adaptive governance of social-ecological systems. *Annual Review of*  
49  
50 *Environmental Resources* 30, 441-473.  
51  
52 Folland, C.K., Rayner, N.A., Brown, S.J., Smith, T.M., Shen, S.S.P., Parker, D.E., Macadam, I., Jones, P.D., Jones, R.N.,  
53  
54 Nicholls, N.,Sexton, D.M.H., 2001. Global temperature change and its uncertainties since 1861. *Geophysical Research*  
55  
56 *Letters* 28, 2621-2624.  
57  
58 Frederick, K.D., Major, D.C., 1997. Climate change and water resources. *Climatic Change* 37, 7-23.  
59  
60  
61  
62  
63  
64  
65

- 1 Frumkin, H., Hess, J., Luber, G., Malilay, J., McGeehin, M., 2008. Climate change: The public health response. American  
2 Journal of Public Health 98, 435-445.
- 3  
4 Galán, C., García-Mozo, H., Vázquez, L., Ruiz, L., De La Guardia, C.D., Trigo, M.M., 2005. Heat requirement for the onset of  
5 the *Olea europaea* L. pollen season in several sites in Andalusia and the effect of the expected future climate change.  
6 International Journal of Biometeorology 49, 184-188.  
7  
8  
9  
10 Gale, P., Drew, T., Phipps, L.P., David, G., Wooldridge, M., 2009. The effect of climate change on the occurrence and  
11 prevalence of livestock diseases in Great Britain: a review. Journal of Applied Microbiology 106, 1409-1423.  
12  
13  
14 Gamble, J.L., Reid, C.E., Post, E., Sacks, J., 2008. A review of the impacts of climate variability and change on aeroallergens  
15 and their associated effects, EPA/600-R-06/164F, US Environmental Protection Agency, Washington, D.C., 1-105.  
16  
17  
18 Garamszegi, L.Z., 2011. Climate change increases the risk of malaria in birds. Global Change Biology 17, 1751-1759.  
19  
20 García-Mozo, H., Galán, C., Jato, V., Belmonte, J., Díaz de la Guardia, C., Fernández, D., Gutiérrez, M., Aira, M.J., Roure,  
21 J.M., Ruiz, L., Trigo, M.M., Domínguez-Vilches, E., 2006. *Quercus* pollen season dynamics in the Iberian Peninsula:  
22 response to meteorological parameters and possible consequences of climate change. Annals of Agricultural and  
23 Environmental Medicine 13, 209-224.  
24  
25  
26  
27  
28 Gardner, T.A., Côté, I.M., Gill, J.A., Grant, A., Watkinson, A.R., 2003. Long-term region-wide declines in Caribbean corals.  
29 Science 301, 958-960.  
30  
31  
32 Gardner, T.A., Côté, I.M., Gill, J.A., Grant, A., Watkinson, A.R., 2005. Hurricanes and Caribbean coral reefs: Impacts, recovery  
33 patterns, and role in long-term decline. Ecology 86, 174-184.  
34  
35  
36  
37 Glover, A. G., Gooday, A. J., Bailey, D. M., Billett, D. S. M., Chevaldonné, P., Colaco, A., Copley, J., Cuvelier, D.,  
38 Desbruyères, D., Kalogeropoulou, V., Klages, M., Lampadariou, N., Lejeune, C. Mestre, N.C., Paterson, G.L.J., Pérez,  
39 T., Ruhl, H., Sarrazin, J., Soltwedel, T., Soto, E.H., Thatje, S., Tselepides, A., Van Gaeveer, S., Vanreusel, A., 2010.  
40 Temporal change in deep-sea benthic ecosystems: a review of the evidence from recent time-series studies. Advances in  
41 Marine Biology 58, 1-95.  
42  
43  
44  
45  
46  
47  
48  
49  
50  
51  
52  
53  
54  
55  
56  
57  
58  
59  
60  
61  
62  
63  
64  
65



- 1 Gould, E.A., Higgs, S., 2009. Impact of climate change and other factors on emerging arbovirus diseases. *Transactions of the*  
2 *Royal Society of Tropical Medicine and Hygiene* 103, 109-121.
- 3
- 4 Graham, N.A., Wilson, S.K., Jennings, S., Polunin, N.V., Bijoux, J.P., Robinson, J., 2006. Dynamic fragility of oceanic coral  
5 reef ecosystems. *Proceedings of the National Academy of Sciences, USA* 103, 8425-8429.
- 6
- 7
- 8 Graham, N.A., McClanahan, T.R., MacNeil, M.A., Wilson, S.K., Polunin, N.V., Jennings, S., Chabanet, P., Clark, S., Spalding,  
9 M.D., Letourneur, Y., Bigot, L., Galzin, R., Öhman, M.C., Garpe, K.C., Edwards, A.J., Sheppard, C.R.C., 2008. Climate  
10 warming, marine protected areas and the ocean-scale integrity of coral reef ecosystems. *PLoS One* 3, e3039, 1-9.
- 11
- 12
- 13
- 14 Graves, P.M., Osgood, D.E., Thomson, M.C., Sereke, K., Araia, A., Zerom, M., Ceccato, P., Bell, M., del Corral, J.,  
15 Ghebreselassie, S., Brantly, E.P., Ghebremeskel, T., 2008. Effectiveness of malaria control during changing climate  
16 conditions in Eritrea, 1998-2003. *Tropical Medicine International Health* 13, 218-228.
- 17
- 18
- 19
- 20 Greaver, T.L., Sternberg, L.S.L. 2010. Decreased precipitation exacerbates the effects of sea level on coastal dune ecosystems  
21 in open ocean islands. *Global Change Biology* 16, 1860-1869.
- 22
- 23
- 24 Greenough, G., McGeehin, M., Bernard, S.M., Trtanj, J., Riad, J., Engelberg, D., 2001. The potential impacts of climate  
25 variability and change on health impacts of extreme weather events in the United States. *Environmental Health*  
26 *Perspectives* 109(suppl. 2), 191-198.
- 27
- 28
- 29
- 30 Griffin, D.W., 2007. Atmospheric movement of microorganisms in clouds of desert dust and implications for human health.  
31 *Clinical Microbiology Reviews* 20, 459-477.
- 32
- 33
- 34 Guilmoto, C.Z., 1998. Institutions and migrations. Short-term versus long-term moves in rural West Africa. *Population Studies*  
35 52, 85-103.
- 36
- 37
- 38 Gunderson, L.H., Carpenter, S.R., Folke, C., Olsson, P., Peterson, G., 2006. Water RATs (resilience, adaptability, and  
39 transformability) in lake and wetland social-ecological systems. *Ecology and Society* 11, 16.
- 40
- 41
- 42 Haines, A., McMichael, A.J., Epstein, P.R., 2000. Environment and health: 2. Global climate change and health”, *Canadian*  
43 *Medical Association Journal* 163, 729-734.
- 44
- 45
- 46 Haines, A., Kovats, R.S., Campbell-Lendrum, D., Corvalan, C., 2006. Climate change and human health: impacts, vulnerability,  
47 and mitigation. *Lancet* 367, 2101-2109.
- 48
- 49
- 50 Hansen, J., Sato, M., Ruedy, R., Lo, K., Lea, D.W., Medina-Elizalde, M., 2006. Global temperature change. *Proceedings of the*  
51 *National Academy of Sciences, USA* 103, 14288-14293.
- 52
- 53
- 54 Hansen, J., Sato, M., Kharecha, P., Russell, G., Lea, D.W., Siddall, M., 2007. Climate change and trace gases. *Philosophical*  
55 *Transactions of the Royal Society A.* 365, 1925-1954.
- 56
- 57
- 58
- 59
- 60
- 61
- 62
- 63
- 64
- 65

- 1 Hartzell-Nichols, L., 2011. Responsibility for meeting the costs of adaptation. *Wiley Interdisciplinary Reviews: Climate Change*  
2 2, 687-700.  
3
- 4 Haug, G.H., Günther, D., Peterson, L.C., Sigman, D.M., Hughen, K.A., Aeschlimann, B., 2003. Climate and the collapse of  
5 Maya civilization. *Science* 299, 1731-1735.  
6
- 7 Hays, G.C., Richardson, A.J., Robinson, C., 2005. Climate change and marine plankton. *Trends in Ecology and Evolution* 20,  
8 337-344.  
9
- 10 Heller, N.E., Zavaleta, E.S., 2009. Biodiversity management in the face of climate change: A review of 22 years of  
11 recommendations. *Biological Conservation* 142, 14-32.  
12
- 13 Hernández-Delgado, E.A., Sandoz, B., Bonkosky, M., Mattei, H., Norat, J., 2010. Impacts of non-point source sewage pollution  
14 in Elkhorn coral, *Acropora palmata* (Lamarck), assemblages of the southwestern Puerto Rico shelf. *Proceedings of the 11<sup>th</sup>*  
15 *International Coral Reefs Symposium*, 747-751.  
16
- 17 Hernández-Delgado, E.A., Hutchinson-Delgado, Y.M., Laureano, R., Hernández-Pacheco, R., Ruiz-Maldonado, T.M., Oms, J.,  
18 Díaz, P.L., 2011. Sediment stress, water turbidity and sewage impacts on threatened Elkhorn coral (*Acropora palmata*)  
19 stands at Vega Baja, Puerto Rico. *Proceedings of the Gulf and Caribbean Fisheries Institute* 63, 83-92.  
20
- 21 Hernández-Delgado E.A., Ramos-Scharrón, C.E., Guerrero, C., Lucking, M.A., Laureano, R., Méndez-Lázaro, P.A., Meléndez-  
22 Díaz, J.O., 2012. Long-term impacts of tourism and urban development in tropical coastal habitats in a changing climate:  
23 Lessons learned from Puerto Rico. 357-398. In Kasimoglu, M. (ed.), *Visions from Global Tourism Industry-Creating and*  
24 *Sustaining Competitive Strategies*. Intech Publications.  
25
- 26 Hernández-Delgado, E.A., Suleimán-Ramos, S.E., 2014. E.S.A. coral species listing: A roadblock to community-based  
27 engagement in coral reef conservation and rehabilitation across the U.S. Caribbean? *Reef Encounter* 29, 11-15.  
28
- 29 Hernández-Delgado, E.A., Mercado-Molina, A.E., Alejandro-Camis, P.J., Candelas-Sánchez, F., Fonseca-Miranda, J.S.,  
30 González-Ramos, C.M., Guzmán-Rodríguez, R., Mège, P., Montañez-Acuña, A.A., Olivo-Maldonado, I., Otaño-Cruz, A.,  
31 Suleimán-Ramos, S.E., 2014. Community-based coral reef rehabilitation in a changing climate: Lessons learned from  
32 hurricanes, extreme rainfall, and changing land use impacts. *Open Journal of Ecology* 4, 918-944.  
33
- 34 Hernández-Pacheco, R., Hernández-Delgado, E.A., Sabat, A.M., 2011. Demographics of bleaching in the Caribbean reef-  
35 building coral *Montastraea annularis*. *Ecosphere* 2(1):art9. 1-13.  
36
- 37 Hess, J.J., Heilpern, K.L., Davis, T.E., Frumkin, H., 2009. Climate change and emergency medicine: impacts and opportunities.  
38 *Academic Emergency Medicine* 16, 782-794.  
39
- 40 Hoeke, R.K., Jokiell, P.L., Buddemeier, R.W., Brainard, R.E., 2011. Projected changes to growth and mortality of Hawaiian  
41 corals over the next 100 years. *PLoS ONE* 6, e18038. doi:10.1371/journal.pone.0018038, 1-13.  
42  
43  
44  
45  
46  
47  
48  
49  
50  
51  
52  
53  
54  
55  
56  
57  
58  
59  
60  
61  
62  
63  
64  
65

- 1  
2 Hoegh-Guldberg, O., 1999. Climate change, coral bleaching and the future of the world's coral reefs. *Marine and Freshwater*  
3 *Research* 50, 839-866.
- 4 Hoegh-Guldberg, O., 2009. Climate change and coral reefs: Trojan horse or false prophecy? A response to Maynard et al.  
5 (2008). *Coral Reefs* 28, 569-575.
- 6  
7 Hoegh-Guldberg, O., 2011. Coral reef ecosystems and anthropogenic climate change. *Regional Environmental Change* 11 Suppl  
8 1), S215-S227.
- 9  
10 Hoegh-Guldberg, O. Mumby, P.J., Hooten, A.J., Steneck, R.S., Greenfield, P., Gomez, E., Harvell, C.D., Sale, P.F., Edwards,  
11 A.J., Caldeira, K., Knowlton, N., Eakin, C.M., Iglesias-Prieto, R., Muthiga, N., Bradbury, R.H., Dubi, A., Hatziolos, M.,  
12 2007. Coral reefs under rapid climate change and ocean acidification. *Science* 318, 1737-1742.
- 13  
14 Hoegh-Guldberg, O., Bruno, J.F., 2010. The impact of climate change on the world's marine ecosystems. *Science* 328, 1523-  
15 1528.
- 16  
17 Hoerling, M.P., Hurrell, J.W., Xu, T., 2001. Tropical origins for recent North Atlantic climate change. *Science* 292, 90-92.
- 18  
19 Hoerling, M.P., Hurrell, J.W., Xu, T., Bates, G.T., Phillips, A.S., 2004. Twentieth century North Atlantic climate change. Part  
20 II: Understanding the effect of Indian Ocean warming. *Climate Dynamics* 23, 391-405.
- 21  
22 Holdren, J.P., Ehrlich, P.R., 1974. Human population and the global environment. *American Scientist* 62, 282-292.
- 23  
24 Hönlisch, B., Hemming, N.G., Archer, D., Siddall, M., McManus, J.F., 2009. Atmospheric carbon dioxide concentration across  
25 the mid-Pleistocene transition. *Science* 324, 1551-1554.
- 26  
27 Hönlisch, B., Ridgwell, A., Schmidt, D.N., Thomas, E., Gibbs, S.J., Sluijs, A., Zeebe, R., Kump, L., Martindale, R.C., Greene,  
28 S.E., Kiessling, W., Ries, J., Zachos, J.C., Royer, D.L., Barker, S., Marchitto, Jr., T.M., Moyer, R., Pelejero, C., Ziveri, P.,  
29 Foster, G.L., Williams, B., 2012. The geological record of ocean acidification. *Science* 335, 1058-1063.
- 30  
31 Horton, G., Hanna, L., Kelly, B., 2010. Drought, drying and climate change: Emerging health issues for ageing Australians in  
32 rural areas. *Australasian Journal of Ageing* 29, 2-7.
- 33  
34 Hosking, J., Jones, R., Percival, T., Turner, N., Ameratunga, S., 2010. Climate change: The implications for child health in  
35 Australasia. *Journal of Pediatrics and Child Health* 47, 493-496.
- 36  
37 Huang, D., 2012. Threatened reef corals of the world. *PLoS ONE* 7: e34459, 1-12.
- 38  
39 Hughes, T.P., 1994. Catastrophes, phase shifts, and large-scale degradation of a Caribbean coral reef. *Science* 265, 1547-1551.
- 40  
41 Hughes, T.P., Baird, A.H., Bellwood, D.R., Card, M., Connolly, S.R., Folke, C., Grosberg, R., Hoegh-Guldberg, O., Jackson,  
42 J.B.C., Kleypas, J., Lough, J.M., Marshall, P., Nyström, M., Palumbi, S.R., Pandolfi, J.M., Rosen, B., Roughgarden, J.,  
43 2003. Climate change, human impacts, and the resilience of coral reefs. *Science* 301, 929-933.
- 44  
45  
46  
47  
48  
49  
50  
51  
52  
53  
54  
55  
56  
57  
58  
59  
60  
61  
62  
63  
64  
65

- 1 Hughes, T.P., Bellwood, D.R., Folke, C., Steneck, R.S., Wilson, J., 2005. New paradigms for supporting the resilience of  
2 marine ecosystems. *Trends in Ecology and Evolution* 20, 380-386.
- 3  
4 Hughes, T.P., Linares, C., Dakos, V., van de Leemput, I.A., van Nes, E.H., 2013a. Living dangerously on borrowed time during  
5 slow, unrecognized regime shifts. *Trends in Ecology and Evolution* 28, 149-155.
- 6  
7  
8 Hughes, T.P., Carpenter, S., Rockström, J., Scheffer, M., Walker, B., 2013b. Multiscale regime shifts and planetary boundaries.  
9 *Trends in Ecology and Evolution* 28, 389-395.
- 10  
11  
12 Hunter, P.R., 2003. Climate change and waterborne and vector-borne disease. *Journal of Applied Microbiology* 94, 37S-46S.
- 13  
14 Huntley, B., 1991. How plants respond to climate change: migration rates, individualism and the consequences for plant  
15 communities. *Annals of Botany* 67(supp1), 15-22.
- 16  
17  
18 Huq, S, Rahman, A., Konate, M., Sokona, Y., Reid, H. 2003. Mainstreaming adaptation to climate change in least developed  
19 countries (LDCS). The International Institute for the Environment and Development, Climate Change Programme,  
20 London, U.K., 1-38.
- 21  
22  
23  
24 Huq, S., Reid, H., 2007. A vital approach to the threat climate change poses to the poor. *Community-Based Adaptation*, AN  
25 IEED Briefing. The International Institute for the Environment and Development, Climate Change Programme, London,  
26 U.K., 1-2.
- 27  
28  
29  
30 Hurrell, J.W., Hoerling, M.P., Phillips, A.S., Xu, T., 2004. Twentieth century North Atlantic climate change. Part I: assessing  
31 determinism. *Climate Dynamics* 23, 371-389.
- 32  
33  
34 Hurtado-Díaz, M., Rojas-Rodríguez, H., Rothenberg, S.J., Gómez-Dantés, H., Cifuentes, E., 2007, Impact of climate variability  
35 on the incidence of dengue in Mexico, *Tropical Medicine International Health* 12, 1327-1337.
- 36  
37  
38 Indian Law Resource Center (IRLC), 2014. Guide on conservation and indigenous peoples in Mesoamerica. International Union  
39 for the Conservation of Nature, CEESP, 1-53.
- 40  
41  
42 Intergovernmental Panel on Climate Change (IPCC), 2007. *Climate Change 2007: Impacts, adaptation and vulnerability*.  
43 Working Group II Contribution to the IPCC Fourth Assessment Report. Summary for Policymakers. Geneva, Switzerland,  
44 1-22.
- 45  
46  
47  
48 Intergovernmental Panel on Climate Change (IPCC), 2014a. *Climate Change 2014: Synthesis Report* [The Core Writing Team,  
49 Pachauri, R.K., Meyer, L. (eds.)]. Cambridge University Press, Cambridge, United Kingdom and New York, NY, USA, 1-  
50 138.
- 51  
52  
53  
54 Intergovernmental Panel on Climate Change (IPCC), 2014b. *Climate Change 2014: Impacts, Adaptation, and Vulnerability*. Part  
55 B: Regional Aspects. Contribution of Working Group II to the Fifth Assessment Report of the Intergovernmental Panel on  
56 Climate Change [Barros, V.R., Field, C.B., Dokken, D.J., Mastrandrea, M.D., Mach, K.J., Bilir, T.E., Chatterjee, M., Ebi,  
57  
58  
59  
60  
61  
62  
63  
64  
65

- 1 K.L., Estrada, Y.O., Genova, R.C., Girma, B., Kissel, E.S., Levy, A.N., MacCracken, S., Mastrandrea, P.R., White, L.L.  
2 (eds.]. Cambridge University Press, Cambridge, United Kingdom and New York, NY, USA, 1-688.  
3  
4 Jackson, J.B.C., 1997. Reefs since Columbus. *Coral Reefs* 16 Suppl., S23-S32.  
5  
6 Jackson, J.B.C., 2001. What was natural in the coastal oceans? *Proceedings of the National Academy of Sciences, USA* 98,  
7  
8 5411-5418.  
9  
10 Jackson, J.B.C., Kirby, M.X., Berger, W.H., Bjorndarl, K.A., Botsford, L.W., Bourque, B.J., Bradbury, R.H., Cooke, R.,  
11  
12 Erlandson, J., Estes, J.A., Hughes, T.P., Kdwell, S., Lange, C.B., Lenihan, H.S., Pandolfi, J.M., Peterson, C.H., Steneck,  
13  
14 R.S., Tegner, M.J., Warner, R.R., 2001. Historical overfishing and the recent collapse of coastal ecosystems. *Science* 293,  
15  
16 629-638.  
17  
18 Jackson, J.B.C., Donovan, M.K., Cramer, K.L., Lam, V.V. (editors). 2014. *Status and Trends of Caribbean Coral Reefs: 1970-*  
19  
20 *2012. Global Coral Reef Monitoring Network, IUCN, Gland, Switzerland.*  
21  
22 Jacobs, S.S., Hellmer, H.H., 1996. Antarctic ice sheet melting in the Southeast Pacific. *Geophysical Research Letters* 23, 957-  
23  
24 960.  
25  
26 Jallow, B.P., Barrow, M.K.A., Leatherman, S.P., 1996. Vulnerability of the coastal zone of The Gambia to sea level rise and  
27  
28 development response strategies and adaptation options. *Climate Research* 6, 165-177.  
29  
30 Jędrusik, M., 2004. Nature and tourism on tropical and subtropical islands. *Miscellanea Geographica* 11, 271-280.  
31  
32 Johannessen, O.M., Bengtsson, L., Miles, M.W., Kuzmina, S.I., Semenov, V.A., Alekseev, G.V., Nagurnyi, A.P., Zakharov,  
33  
34 V.F., Bobylev, L.P., Pettersson, L.H., Hasselmann, K., Cattle, H.P., 2004. Arctic climate change: observed and modelled  
35  
36 temperature and sea-ice variability. *Tellus* 56A, 328-341.  
37  
38 Jones, G.P., McCormick, M.I., Srinivasan, M., Eagle, J.V., 2004. Coral decline threatens fish biodiversity in marine reserves.  
39  
40 *Proceedings of the National Academy of Sciences USA*, 101, 8251-8253.  
41  
42 Jónsson, G., 2010. The environmental factor in migration dynamics: a review of African case studies. *International Migration*  
43  
44 *Institute, Working Paper* 21, 1-34.  
45  
46 Jonsson, T., Durkee, D., 2011. Environmental degradation in the case of Chad: a factor to violent conflict and political  
47  
48 instability? *Rethinking Development in an Age of Scarcity and Uncertainty. New Values, Voices and Alliances for*  
49  
50 *Increased Resilience. 19-22 September 2011, University of York, UK.*  
51  
52 Jouzel, J., Masson-Delmotte, V., Cattani, O., Dreyfus, G., Falourd, S., Hoffmann, G., Minster, B., Nouet, J., Barnola, J.M.,  
53  
54 Chappellaz, J., Fischer, H., Gallet, J.C., Johnsen, S., Leuenberger, M., Louergue, L., Luethi, D., Oerter, H., Parrenin, F.,  
55  
56 Raisbeck, G., Raynaud, D., Schilt, A., Schwander, J., Selmo, E., Souchez, R., Spahni, R., Stauffer, B., Steffensen, J.P.,  
57  
58  
59  
60  
61  
62  
63  
64  
65

- 1 Stenni, B., Stocker, T.F., Tison, J.L., Werner, M., Wolff, E.W., 2007. Orbital and millennial Antarctic climate variability  
2 over the past 800,000 years. *Science* 317, 793-796.  
3
- 4 Justić, D., Rabalais, N.N., Turner, R.E., 1996. Effects of climate change on hypoxia in coastal waters: A doubled CO<sub>2</sub> scenario  
5 for the northern Gulf of Mexico. *Limnology and Oceanography*, 41, 992-1003.  
6
- 7 Justić, D., Rabalais, N., Turner, R.E., 1997. Impacts of climate change on net productivity of coastal waters: implications for  
8 carbon budgets and hypoxia. *Climate Research* 8, 225-237.  
9
- 10 Karl, T.R., Trenberth, K.E., 2003. Modern global climate change. *Science* 302, 1719-1723.  
11
- 12 Kaniewska, P., Campbell, P.R., Kline, D.I., Rodríguez-Lanetty, M., Miller, D.J., Dove, S., Hoegh-Guldberg, O., 2012. Major  
13 cellular and physiological impacts of ocean acidification on a reef building coral. *PLoS ONE*, 7, e34659, 1-12.  
14
- 15 Kauffman, R.K., Kauppi, H., Stock, J.H., 2006. Emissions, concentrations, & temperature: A time series analysis. *Climatic*  
16 *Change* 77, 249-278.  
17
- 18 Kearney, M., Porter, W.P., Williams, C., Ritchie, S., Hoffmann, A.A., 2009. Integrating biophysical models and evolutionary  
19 theory to predict climatic impacts on species' ranges: the dengue mosquito *Aedes aegypti* in Australia. *Functional Ecology*  
20 23, 528-538.  
21
- 22 Keim, M.E., 2008. Building human resilience: The role of public health preparedness and response as an adaptation to climate  
23 change. *American Journal of Preventive Medicine* 35, 508-516.  
24
- 25 Keiser, J., Utzinger, J., 2009. Food-borne trematodiasis. *Clinical Microbiology Reviews* 22, 466-483.  
26
- 27 Knutson, T.R., Tuleya, R.E., Kurihara, Y., 1998. Simulated increase of hurricane intensities in a CO<sub>2</sub>-warmed climate. *Science*  
28 279, 1018-1021.  
29
- 30 Knutson, T.R., Tuleya, R.E., 1999. Increased hurricane intensities with CO<sub>2</sub>-induced warming as simulated using the GFDL  
31 hurricane prediction system. *Climate Dynamics* 15, 503-519.  
32
- 33 Knutson, T.R., Tuleya, R.E., 2004. Impact of CO<sub>2</sub>-induced warming on simulated hurricane intensity and precipitation:  
34 Sensitivity to the choice of climate model and convective parameterization. *Journal of Climate* 17, 3477-3495.  
35
- 36 Knutti, R., Stocker, T.F., 2000. Influence of the thermohaline circulation on projected sea level rise. *Journal of Climate* 13,  
37 1997-2001.  
38
- 39 Koelle, K., 2009. The impact of climate on the disease dynamics of cholera. *Clinical Microbiology Infections* 15(Suppl. 1), 29-  
40 31.  
41
- 42 Krabill, W., Hanna, E., Huybrechts, P., Abdalati, W., Cappelen, J., Csatho, B., Frederick, E., Manizade, S., Martin, C., Sonntag,  
43 J., Swift, R., Thomas, R., Yungel, J., 2004. Greenland Ice Sheet: Increased coastal thinning. *Geophysical Research Letters*  
44 31, 24-27.  
45  
46  
47  
48  
49  
50  
51  
52  
53  
54  
55  
56  
57  
58  
59  
60  
61  
62  
63  
64  
65

- 1 Krichene, N., 2008. Recent inflationary trends in world commodities markets. International Monetary Fund Working Paper  
2 WP/08/130, 1-26.  
3
- 4 Lane, D.R., Ready, R.C., Buddemeier, R.W., Martinich, J.A., Shouse, K.C., Wobus, C.W., 2013. Quantifying and valuing  
5 potential climate change impacts on coral reefs in the United States: Comparison of two scenarios. PLoS ONE 8, e82579.  
6 doi:10.1371/journal.pone.0082579, 1-13.  
7
- 8 Levermann, A., Griesel, A., Hofmann, M., Montoya, M., Rahmstorf, S., 2005. Dynamic sea level changes following changes in  
9 the thermohaline circulation. *Climate Dynamics* 24, 347-354.  
10
- 11 Levett, P.N., 2001. Leptospirosis. *Current Microbiological Review* 14, 296-326.  
12
- 13 Lipp, E.K., Kurz, R., Vincent, R., Rodriguez-Palacios, C., Farrah, S.R., Rose, J.B., 2001. The effects of seasonal variability and  
14 weather on microbial fecal pollution and enteric pathogens in a subtropical estuary. *Estuaries* 24, 266-276.  
15
- 16 Liverman, D.M. 1990. Vulnerability to global environmental change. *Understanding global environmental change.*, In,  
17 Kaspersen et al. (eds), *The contributions of risk analysis and management*, 27-44.  
18
- 19 Lugo A.E., 2000. Effects and outcomes of Caribbean hurricanes in a climate change scenario. *The Science of the Total*  
20 *Environment* 262, 243-251.  
21
- 22 Lundberg, J., Moberg, F., 2003. Mobile link organisms and ecosystem functioning: Implications for ecosystem resilience and  
23 management. *Ecosystems* 6, 87-98.  
24
- 25 Luthcke, S.B., Zwally, H.J., Abdalati, W., Rowlands, D.D., Ray, R.D., Nerem, R.S., Lemoine, F.G., McCarthy, J.J., Chinn,  
26 D.S., 2006. Recent Greenland ice mass loss by drainage system from satellite gravity observations. *Science* 314, 1286-  
27 1289.  
28
- 29 MacDonald, L.H., Anderson, D.M., Dietrich, W.E., 1997. Paradise threatened: land use and erosion on St. John, US Virgin  
30 Islands. *Environmental Management* 21, 851-863.  
31
- 32 MacNeil, M.A., Graham, N.A.J., 2010. Enabling regional management in a changing climate through Bayesian meta-analysis of  
33 a large-scale disturbance. *Global Ecology and Biogeography* 19, 412-421.  
34
- 35 Mainka, S.A., Trivedi, M. (eds.), 2002. *Links between Biodiversity conservation, livelihoods and food security: The sustainable*  
36 *use of wild species for meat.* IUCN, Gland, Switzerland and Cambridge, UK. vi + 1-135.  
37
- 38 Mallin, M.A., Williams, K.E., Esham, E.C., Lowe, R.P., 2000. Effect of human development on bacteriological water quality in  
39 coastal watersheds. *Ecological Applications* 10, 1047-1056.  
40
- 41 Manabe, S., Wetherald, R.T., 1980. On the distribution of climate change resulting from an increase in CO<sub>2</sub> content of the  
42 atmosphere. *Journal of Atmospheric Science* 37, 99-118.  
43
- 44 Mann, M.E., Emanuel, K.A., 2006. Atlantic hurricane trends linked to climate change. *EOS* 87, 233-244.  
45  
46  
47  
48  
49  
50  
51  
52  
53  
54  
55  
56  
57  
58  
59  
60  
61  
62  
63  
64  
65

- 1  
2 Marshall, N.A., Marshall, P.A., Tamelander, J., Obura, D., Malleret-King, D., Cinner, J.E., 2010. A framework for social  
3 adaptation to climate change; Sustaining tropical coastal communities and industries. IUCN, Gland, Switzerland, 1-36.
- 4 Marshall, P.A., Johnson, J.E., 2007. The Great Barrier Reef and climate change: vulnerability and management implications.  
5  
6 Climate change and the Great Barrier Reef. Great Barrier Reef Marine Park Authority and the Australian Greenhouse  
7  
8 Office, Australia, 774-801.
- 9  
10 Martens, W.J.M., 1998. Health impacts of climate change and ozone depletion: An ecoepidemiologic modeling approach.  
11  
12 Environmental Health Perspectives 106(suppl. 1), 241-251.
- 13  
14 Martínez, M.L., Intralawan, A., Vázquez, G., Pérez-Maqueo, O., Sutton, P., Landgrave, R., 2007. The coasts of our world:  
15  
16 Ecological, economic and social importance. Ecological Economics 63, 254-272.
- 17  
18 Martínez, E., Antoine, D., D'Ortenzio, F., Gentili, B., 2009. Climate-driven basin-scale decadal oscillations of oceanic  
19  
20 phytoplankton. Science 326, 1253-1256.
- 21  
22 Mawdsley, J., 2011. Design of conservation strategies for climate adaptation. WIREs Climate Change 2, 498-515.
- 23  
24 McClanahan, T.R., 2002. The near future of coral reefs. Environmental Conservation 29, 460-483.
- 25  
26 McClanahan, T.R., Graham, N.A.J., MacNeil, M.A., Muthiga, N.A., Cinner, J.E., Bruggemann, J.H., Wilson, S.H., 2011.  
27  
28 Critical thresholds and tangible targets for ecosystem-based management of coral reef fisheries. Proceedings of the  
29  
30 National Academy of Sciences, USA. 108, 17230-17233.
- 31  
32 McClanahan, T.R., Cinner, J.E., 2012. Adapting to a changing environment. Confronting the consequences of climate change.  
33  
34 Oxford University Press, New York, NY, 1-192.
- 35  
36 McConney, P., Pomeroy, R., Mahon, R., 2003. Guidelines for coastal resource co-management in the Caribbean:  
37  
38 communicating the concepts and conditions that favour success. Caribbean Coastal Co-management Guidelines Project.  
39  
40 Caribbean Conservation Association, Barbados, 1-55.
- 41  
42 McCulloch, M.T., Tudhope, A.W., Esat, T.M., Mortimer, G.E., Chappell, J., Pillans, B., Chivas, A.R., Omura, A., 1999. Coral  
43  
44 record of Equatorial sea-surface temperatures during the penultimate deglaciation at Huon Peninsula. Science 283, 202-  
45  
46 204.
- 47  
48 McGeehin, M.A., Mirabelli, M., 2001. The potential impacts of climate variability and change on temperature-related morbidity  
49  
50 and mortality in the United States. Environmental Health Perspectives 109, 185-189.
- 51  
52 McKee, J.K., Sciulli, P.W., Foose, C.D., Waite, T.A., 2003. Forecasting global biodiversity threats associated with human  
53  
54 population growth. Biological Conservation 115, 161-164.
- 55  
56  
57  
58  
59  
60  
61  
62  
63  
64  
65



- 1 McKinnon, A. D., Richardson, A. J., Burford, M. A., & Furnas, M. J. (2007). Vulnerability of Great Barrier Reef plankton to  
2 climate change, 121-152. In, Johnson, J.E., Marshall, P.A. (eds.), *Climate change and the Great Barrier Reef: A*  
3 *vulnerability assessment*. Great Barrier Reef Marine Park Authority and Australian Greenhouse Office, 1-818.
- 4  
5 McLeman, R., Smit, B., 2006. Migration as an adaptation to climate change. *Climatic Change* 76, 31-53.
- 6  
7 McLeod, E., Salm, R.V., 2006. Managing mangroves for resilience to climate change. IUCN, Gland, Switzerland, 1-64.
- 8  
9 McManus, D.P., Gray, D.J., Li, Y., Feng, Z., Williams, G.M., Stewart, D., Rey-Ladino, J., Ross, A.G., 2010. Schistosomiasis in  
10 the People's Republic of China: the era of the Three Georges Dam. *Current Microbiological Reviews* 23, 442-466.
- 11  
12  
13  
14 McMichael, A.J., Woodruff, R.E., Hales, S., 2006. Climate change and human health: present and future risks. *Lancet* 367, 859-  
15  
16 869.
- 17  
18 McMichael, A.J., Lindgren, E., 2011. Climate change: present and future risks to health, and necessary responses. *Journal of*  
19  
20 *International Medicine* 270, 401-413, 2011.
- 21  
22 McMichael, C., Barnett, J., McMichael, A.J., 2012. An ill wind? Climate change, migration, and health. *Environmental Health*  
23  
24 *Perspectives* 120, 646-654.
- 25  
26 McQuatters-Gollop, A., Reid, P.C., Edwards, M., Burkill, P.H., Castellani, C., Batten, S., Gieskes, W., Beare, D., Bidigare,  
27  
28 R.R., Head, E., Johnson, R., Kahru, M., Koslow, J.A., Peña, A., 2011. Is there a decline in marine phytoplankton? *Nature*,  
29  
30 472, E6-E7.
- 31  
32 McWilliams, J.P., Côté, I.M., Gill, J.A., Sutherland, W.J., Watkinson, A.R., 2005. Accelerating impacts of temperature-induced  
33  
34 coral bleaching in the Caribbean. *Ecology* 86, 2055-2060.
- 35  
36 Mearns, R., Norton, A. (eds.), 2010. *Social dimensions of climate change. Equity and vulnerability in a warming world*. The  
37  
38 World Bank, Washington, DC, 1-319.
- 39  
40 Medina-Elizalde, M., Lea, D.W., 2005. The mid-Pleistocene transition in the tropical Pacific. *Science* 310, 1009-1012.
- 41  
42 Medina-Elizalde, M., Rohling, E.J., 2012. Collapse of Classic Maya civilization related to modest reduction in precipitation.  
43  
44 *Science* 335, 956-959.
- 45  
46 Meehl, G.A., Washington, W.M., Collins, W.D., Arblaster, J.M., Hu, A., Buja, L.E., Strand, W.G., Teng, H., 2005. How much  
47  
48 more global warming and sea level rise? *Science* 307, 1769-1772.
- 49  
50 Meehl, G.A., Covey, C., Delworth, T., Latif, M., McCavaney, B., Mitchell, J.F.B., Stouffer, R.J., Taylor, K.E., 2007. The  
51  
52 WCRP CMIP3 multimodel dataset: A new era in climate change research. *Bulletin of the American Meteorological*  
53  
54 *Society* 88, 1383-1394.
- 55  
56 Meesters, E.H., Bak, R.P.M., Westmacott, S., Ridgley, M., Dollar, S., 1998. A fuzzy logic model to predict coral reef  
57  
58 development under nutrient and sediment stress. *Conservation Biology* 12, 957-965.
- 59  
60  
61  
62  
63  
64  
65

- 1  
2 Melillo, J.M., McGuire, A.D., Kicklighter, D.W., Moore III, B., Vorosmarty, C.J., Schloss, A.L., 1993. Global climate change  
3 and terrestrial net primary production. *Nature* 363, 234-240.
- 4 Méndez-Lázaro, P., 2012. Potential impacts of climate change and variability on public health. *Journal of Geology and*  
5 *Geosciences* 1, DOI: 10.4172/jgg.1000e104, 1.
- 6  
7 Méndez Lázaro, P., Hernández Delgado, E.A., Norat Ramírez, J., Cordero Rivera, L., Santiago Nieves, A., 2012. Técnicas de  
8  
9 SIG aplicadas al estudio de zonas costaneras y cuencas hidrográficas en la isla de Puerto Rico. *Revista Internacional de las*  
10 *Ciencias y Tecnología de la Información Geográfica, Geo-Focus* 12, 71-92.
- 11  
12  
13 Mesolella, K.J., 1967. Zonation of uplifted Pleistocene coral reefs on Barbados, West Indies. *Science* 156, 638-640.
- 14  
15 Michener, W.K., Blood, E.R., Bildstein, K.L., Brinson, M.M., Gardner, L.R., 1997. Climate change, hurricanes and tropical  
16  
17 storms, and rising sea level in coastal wetlands. *Ecological Applications* 7, 770-801.
- 18  
19 Miller, J., Waara, R., Muller, E., Rogers, C., 2006. Coral bleaching and disease combine to cause extensive mortality on reefs in  
20  
21 US Virgin Islands. *Coral Reefs* 25, 418.
- 22  
23 Miller, J., Muller, E., Rogers, C., Waara, R., Atkinson, A., Whelan, K.R.T., Patterson, M., Witcher, B., 2009. Coral disease  
24  
25 following massive bleaching in 2005 causes 60% decline in coral cover on reefs in the US Virgin Islands. *Coral Reefs* 28,  
26  
27 925-937.
- 28  
29 Mills, E., 2005. Insurance in a climate of change. *Science* 309, 1040-1044.
- 30  
31 Miks, J. (ed.). 2010. Migration – Character and Scope Economic Potential: Regional Perspectives. The Forum, Fall 2010, 1-189.
- 32  
33 Mimura, N., 1999. Vulnerability of island countries in the South Pacific to sea level rise and climate change. *Climate Research*  
34  
35 12, 137-143.
- 36  
37 Miththapala, S., 2008. *Coral Reefs. Coastal Ecosystems Series, vol 1. Colombo, Sri Lanka: Ecosystems and Livelihoods Group*  
38  
39 *Asia, IUCN, pp. 1-36 + iii, 2008.*
- 40  
41 Moberg, F., Folke, C., 1999). Ecological goods and services of coral reef ecosystems. *Ecological Economics* 29, 215-233.
- 42  
43 Moreno, A., Becken, S., 2009. A climate change vulnerability assessment methodology for coastal tourism. *Journal of*  
44  
45 *Sustainable Tourism* 17, 473-488.
- 46  
47 Munday, P.L., Jones, G.P., Pratchett, M.S., Williams, A.J., 2008. Climate change and the future for coral reef fishes. *Fish and*  
48  
49 *Fisheries* 9, 261-285.
- 50  
51 Munday, P.L., Leis, J.M., Lough, J.M., Parks, C.B., Kingsford, M.J., Berumen, M.L., Lambrechts, J., 2009. Climate change and  
52  
53 coral reef connectivity. *Coral Reefs* 28, 379-395.
- 54  
55 Nadarajah, C., Rankin, J.D., 2005. European spatial planning: Adapting to climate events. *Weather* 60, 190-194.
- 56  
57  
58  
59  
60  
61  
62  
63  
64  
65

- 1 National Oceanic and Atmospheric Administration [NOAA], 2013. Trends in atmospheric carbon dioxide. NOAA, Earth  
2 Systems Research Laboratory, Global Monitoring Division <http://www.esrl.noaa.gov/gmd/ccgg/trends/global.html>  
3
- 4 National Research Council [NRC]. 2010. Ocean acidification: A national strategy to meet the challenges of a changing ocean.  
5  
6 National Academy Press, Washington, DC, 1-175.  
7
- 8 National Research Council [NRC]. 2013. A review of the draft 2013 National Climate Assessment. National Academy Press,  
9  
10 Washington, DC, 1-132.  
11
- 12 Neelin, J.D., Münnich, M., Su, H., Meyerson, J.E., Holloway, C.E., 2006. Tropical drying trends in global warming models and  
13  
14 observations. *Proceedings of the National Academy of Sciences, USA* 103, 6110-6115.  
15
- 16 Nicholls, R.J., Hanson, S., Herweijer, C., Patmore, N., Hallegatte, S., Corfee-Morlot, J., Chateau, J., Muir-Wood, R., 2008.  
17  
18 Ranking port cities with high exposure and vulnerability to climate extremes: Exposure estimates. *OECD Environment*  
19  
20 *Working Papers, No. 1*, OECD Publishing, <http://dx.doi.org/10.1787/011766488208>, 1-62.  
21
- 22 Nicholls, R.J., Cazenave, A., 2010. Sea-level rise and its impact on coastal zones. *Science* 328, 1517-1520.  
23
- 24 Nichols, R.J., Marinova, N., Lowe, J.A., Brown, S., Vellinga, P., de Gusmão, D., Hinkel, J., Tol, R.S.J., 2010. Sea-level rise and  
25  
26 its possible impacts given a 'beyond 4°C world' in the twenty-first century. *Philosophical Transactions of the Royal Society*  
27  
28 *A* 369, 161-181.  
29
- 30 Norat-Ramírez, J., Méndez-Lázaro, P., Hernández-Delgado, E.A., Cordero-Rivera, L., 2013. El impacto de aguas usadas de  
31  
32 fuentes dispersas en el litoral costero de la Reserva Marina Tres Palmas (Rincón-Puerto Rico). *Revista de la Asociación*  
33  
34 *Venezolana de Ingeniería Sanitaria Ambiental* VII-015, 27-30.  
35
- 36 Nowlis, J.S., Roberts, C.M., Smith, A.H., Siirila, E. 1997. Human-enhanced impacts of a tropical storm on nearshore coral reefs.  
37  
38 *Ambio* 26, 515-521.  
39
- 40 Núñez, L., Grosjean, M., Cartajena, I., 2002. Human occupations and climate change in the Puna de Atacama, Chile. *Science*,  
41  
42 298, 821-824.  
43
- 44 O'Brien, K.L., Leichenko, R.M., 2000. Double exposure: assessing the impacts of climate change within the context of  
45  
46 economic globalization. *Global Environmental Change* 10, 221-232.  
47
- 48 O'Brien, K.L., Leichenko, R., Kelkar, U., Venema, H., Aandahl, G., Tompkins, H., Javed, A., Bhadwal, S., Barg, S., Nygaard,  
49  
50 L., West, J., 2004. Mapping vulnerability to multiple stressors: climate change and globalization in India. *Global*  
51  
52 *Environmental Change* 14, 303-313.  
53
- 54 Ogbu, J.U. 1973. Seasonal hunger in tropical Africa as a cultural phenomenon. *Africa* 43, 317-332.  
55
- 56 Ogden, J.C., 1997. Marine managers look upstream for connections. *Science* 278, 1414-1415.  
57  
58  
59  
60  
61  
62  
63  
64  
65

- 1 Ogston, A.S., Field, M.E., 2010. Predictions of turbidity due to enhanced sediment resuspension resulting from sea-level rise on  
2 a fringing coral reef: Evidence from Molokai, Hawaii. *Journal of Coastal Research* 26, 1027-1037.
- 3
- 4 Olsson, P., Gunderson, L.H., Carpenter, S.R., Ryan, P., Lebel, L., Folke, C., Holling, C.S., 2006. Shooting the rapids:  
5 navigating transitions to adaptive governance of social-ecological systems. *Ecology and Society*, 11, 18.
- 6
- 7
- 8 Omarjee, R., Prat, C., Flusin, O., Boucau, S., Tenebray, B., Merle, O., Huc-Anais, P., Cassadou, S., Leparç-Goffart, I., 2014.  
9 Importance of case definition to monitor ongoing outbreak of chikungunya virus on a background of actively circulating  
10 dengue virus, St Martin, December 2013 to January 2014. *Euro Surveillance* 19, 1-3.
- 11
- 12
- 13
- 14 Oppenheimer, M., 1998. Global warming and the stability of the West Antarctic ice sheet. *Nature* 393, 325-332.
- 15
- 16 Orr, J.C., Fabry, V.J., Aumont, O., Bopp, L., Doney, S.C., Feely, R.A., Gnanadesikan, A., Gruber, N., Ishida, A., Joos, F., Key,  
17 R.M., Lindsay, K., Maier-Reimer, E., Matear, R., Monfray, P., Mouchet, A., Najjar, R.G., Plattner, G.-K., Rodgers, K.B.,  
18 Sabine, C.L., Sarmiento, J.L., Schlitzer, R., 2005. Anthropogenic ocean acidification over the twenty-first century and its  
19 impact on calcifying organisms. *Nature* 437, 681-686.
- 20
- 21
- 22
- 23
- 24 Paddock, M.J., Reynolds, J.D., Aguilar, C., Appeldoorn, R.S., Beets, J., Burkett, E.W., Chittaro, P.M., Clarke, K., Esteves, R.,  
25 Fonseca, A.C., Forrester, G.E., Friedlander, A.M., García-Sais, J., González-Sansón, G., Jordan, L.K.B., McClellan, D.B.,  
26 Miller, M.W., Molloy, P.P., Mumby, P.J., Nagelkerken, I., Nemeth, M., Navas-Camacho, R., Pitt, J., Polunin, N.V.C.,  
27 Reyes-Nivia, M.C., Robertson, D.R., Rodríguez-Ramírez, A., Salas, E., Smith, S.R., Spieler, R.E., Steele, M.A., Williams,  
28 I.D., Wormald, C.L., Watkinson, A.R., Côté, I.M., 2009. Recent region-wide declines in Caribbean reef fish abundance.  
29 *Current Biology* 19, 1-6.
- 30
- 31
- 32
- 33
- 34
- 35
- 36 Pandolfi, J.M., 1996. Limited membership in Pleistocene reef coral assemblages from the Huon Peninsula, Papua New Guinea:  
37 Constancy during global change. *Paleobiology* 22, 152-176.
- 38
- 39
- 40 Pandolfi, J.M., 1999. Response of Pleistocene coral reefs to environmental change over long temporal scales. *American*  
41 *Zoologist* 39, 113-130.
- 42
- 43
- 44 Pandolfi, J.M., Jackson, J.B.C., 2001. Community structure of Pleistocene coral reefs of Curaçao, Netherlands Antilles.  
45 *Ecological Monographs* 71, 49-67.
- 46
- 47
- 48 Pandolfi, J.M., Bradbury, R.H., Sala, E., Hughes, T.P., Bjorndal, K.A., Cooke, R.G., McArdle, D., McClenachan, L., Newman,  
49 M.J.H., Paredes, G., Warner, R.R., Jackson, J.B.C., 2003. Global trajectories of the long-term decline of coral reef  
50 ecosystems. *Science* 301, 955-958.
- 51
- 52
- 53
- 54 Pandolfi, J.M., Jackson, J.B.C., 2006. Ecological persistence interrupted in Caribbean coral reefs. *Ecology Letters* 9, 818-826.
- 55
- 56 Pandolfi, J.M., Jackson, J.B.C., Baron, N., Bradbury, R.H., Guzmán, H.M., Hughes, T.P., Kappel, C.V., Micheli, F., Ogden,  
57 J.C., Possingham, H.P., & Sala, E., 2005. Are U.S. coral reefs on the slippery slope to slime? *Science* 307, 1725-1726.
- 58
- 59
- 60
- 61
- 62
- 63
- 64
- 65

- 1 Pandolfi, J.M., Connolly, S.R., Marshall, D.J., Cohen, A.L. 2011. Projecting coral reef futures under global warming and ocean  
2 acidification. *Science* 333, 418-422.
- 3  
4 Pandolfi, J.M., Connolly, S.R., Marshall, D.J., Cohen, A.L., 2011. Projecting coral reef futures under global warming and ocean  
5 acidification. *Science* 333, 418-422.
- 6  
7  
8 Paris, C.B., Cowen, R.K., Lwiza, K.M.M., Wang, D.P., Olson, D.B. 2002. Multivariate objective analysis of the coastal  
9 circulation of Barbados, West Indies: implication for larval transport. *Deep Sea Research Part I: Oceanographic Research*  
10 *Papers* 49, 1363–1386.
- 11  
12  
13  
14 Parry, M.L., Rosenzweig, C., Iglesias, A., Livermore, M., Fischer, G. 2004. Effects of climate change on global food production  
15 under SRES emissions and socio-economic scenarios. *Global Environmental Change* 14, 53-67.
- 16  
17  
18 Patz, J.A., Strzepek, K., Lele, S., Hedden, M., Greene, S., Noden, B., Hay, S.I., Kalkstein, L., Beier, J.C. 1998. Predicting key  
19 malaria transmission factors, biting and entomological inoculation rates, using modeled soil moisture in Kenya. *Tropical*  
20 *Medicine and International Health* 3, 818-827.
- 21  
22  
23  
24 Patz, J.A., McGeehin, M.A., Bernard, S.M., Ebi, K.L., Epstein, P.R., Grambsch, A., Gubler, D.J., Reiter, P., Romieu, I, Rose,  
25 J.B., Samet, J.M., Trtanj, J., 2000. The potential health impacts of climate variability and change for the United States:  
26 Executive summary of the Report of the Health Sector of the U.S. National Assessment. *Environmental Health*  
27 *Perspectives* 108, 367-376.
- 28  
29  
30  
31  
32 Patz, J.A., Kovatz, R.S., 2002. Hotspots in climate change and human health. *BMJ: British Medical Journal* 325, 1094-1098.
- 33  
34 Patz, J.A., Campbell-Lendrum, D., Holloway, T., Foley, J.A., 2005. Impact of regional climate change on human health. *Nature*  
35 438, 310-317.
- 36  
37  
38 Patz, J.A., Vavrus, S.J., Uejio, C.K., McLellan, S.I., 2008. Climate change and waterborne disease risk in the Great Lakes  
39 Region of the U.S., *American Journal of Preventive Medicine* 35, 451-458.
- 40  
41  
42 Pauley, D., Christensen, V., Guénette, S., Pitcher, T.J., Sumaila, U.R., Walters, C.J., Watson, R., Zeller, D., 2002. Towards  
43 sustainability in world fisheries. *Nature* 418, 689-695.
- 44  
45  
46 Perry, C.T., Kench, P.S., Smithers, S.G., Riegl, B., Yamano, H., O'Leary, M.J., 2011. Implications of reef ecosystem change for  
47 the stability and maintenance of coral reef islands. *Global Change Biology* 17, 3679-3696.
- 48  
49  
50 Peterson, T.C., Taylor, M.A., Demeritte, R., Duncombe, D.L., Burton, S., Thompson, F., Porter, A., Mercedes, M., Villegas, E.,  
51 Semexant Fils, R., Klein Tank, A., Martis, A., Warner, R., 2002. Recent changes in climate extremes in the Caribbean  
52 region. *Journal of Geophysical Research* 107, D21, 4601, doi:10.1029/2002JD002251, 16-1-16-9.
- 53  
54  
55 Pezza, A.B., Simmonds, I., 2005. The first South Atlantic hurricane: Unprecedented blocking, low shear and climate change.  
56 *Geophysical Research Letters* 32, L15712, 1-5.
- 57  
58  
59  
60  
61  
62  
63  
64  
65

- 1 Planque, B., Fromentin, J.M., Cury, P., Drinkwater, K.F., Jennings, S., Perry, R.I., Kifani, S., 2010. How does fishing alter  
2 marine populations and ecosystems sensitivity to climate? *Journal of Marine Systems* 79, 403-417.  
3
- 4 Plummer, R., Armitage, D., 2007. A resilience-based framework for evaluating adaptive co-management: linking ecology,  
5 economics and society in a complex world. *Ecological Economics* 61, 62-74.  
6
- 7 Pope, K.O., Terrell, J.E., 2008. Environmental setting of human migrations in the circum-Pacific region. *Journal of*  
8 *Biogeography* 35, 1-21.  
9
- 10 Pörtner, H., 2001. Climate change and temperature-dependent biogeography: oxygen limitation of thermal tolerance in animals.  
11 *Naturwissenschaften* 88, 137-146.  
12
- 13 Pörtner, H.O., Peck, M.A., 2010. Climate change effects on fishes and fisheries: towards a cause-and-effect understanding.  
14 *Journal of Fish Biology* 77, 1745-1779.  
15
- 16 Powers, A.M., Logue, C.H., 2007. Changing patterns of chikungunya virus: re-emergence of a zoonotic arbovirus. *Journal of*  
17 *General Virology* 88, 2363-2377.  
18
- 19 Pratchett, M.S., Munday, P., Wilson, S.K., Graham, N.A.J., Cinner, J.E., Bellwood, D.R., Jones, G.P., Polunin, N.V.C.,  
20 McClanahan, T.R., 2008. Effects of climate-induced coral bleaching on coral-reef fishes. *Ecological and economic*  
21 *consequences. Oceanography and Marine Biology: Annual Review* 46, 251-296.  
22
- 23 Pratchett, M.S., Hoey, A.S., Wilson, S.K., 2014. Reef degradation and the loss of critical ecosystem goods and services  
24 provided by coral reef fishes. *Current Opinion in Environmental Sustainability* 7, 37-43.  
25
- 26 Rabalais, N.N., Turner, R.E., Wiseman, W.J., Jr., 2001. Hypoxia in the Gulf of Mexico. *Journal of Environmental Quality* 30,  
27 320-329.  
28
- 29 Rabalais, N.N., Turner, R.E., Wiseman, W.J., Jr., 2002. Gulf of Mexico Hypoxia, a.k.a. "The Dead Zone". *Annual Review of*  
30 *Ecology and Systematics* 33, 235-263.  
31
- 32 Rabalais, N.N., Turner, R.E., Díaz, R.J., Justic, D., 2009. Global change and eutrophication of coastal waters. *ICES Journal of*  
33 *Marine Science* 66, 1528-1537.  
34
- 35 Rahmstorf, S. 2003. The current climate. *Nature* 421, 699.  
36
- 37 Rahmstorf, S., 2006. Thermohaline Ocean Circulation. 1-10, In: Elias, S.A. (ed.), *Encyclopedia of Quaternary Sciences*.  
38 Elsevier, Publ., Amsterdam, The Netherlands.  
39
- 40 Ramos-Scharrón, C.E., 2012. Effectiveness of drainage improvements in reducing sediment production rates from an unpaved  
41 road. *Journal of Soil and Water Conservation* 67, 87-100.  
42  
43  
44  
45  
46  
47  
48  
49  
50  
51  
52  
53  
54  
55  
56  
57  
58  
59  
60  
61  
62  
63  
64  
65

- 1 Ramos-Scharrón, C.E., Amador, J.M., Hernández-Delgado, E.A., 2012. An interdisciplinary erosion mitigation approach for  
2 coral reef protection – A case study from the eastern Caribbean. 127-160. In, Cruzado, A. (Ed.), *Marine Ecosystems*,  
3  
4 InTech Publ.
- 5  
6 Ramos-Scharrón, C., Torres-Pulliza, D., Hernández-Delgado, E.A., 2015. Watershed- and island-scale land cover changes in  
7  
8 Puerto Rico (1930s-2004) and their potential effects on coral reef ecosystems. *Science of the Total Environment* 506-  
9  
10 507,241-251.
- 11  
12 Ranjan, G.H., Kazama, S., Sawamoto, M., 2006. Effects of climate change on coastal fresh groundwater resources. *Global*  
13  
14 *Environmental Change* 16, 388-399.
- 15  
16 Rau, G.H., McLeod, E.L., Hoegh-Guldberg, O., 2012. The need for new ocean conservation strategies in a high-carbon dioxide  
17  
18 world. *Nature Climate Change* 2, 720-724.
- 19  
20 Reiter, P., 2001. Climate change and mosquito-borne disease. *Environmental Health Perspectives*, 109(Suppl 1), 141-161.
- 21  
22 Relman, D.A. M.A. Hambyrg, E.R. Choffness, and A. Mack, 2008. *Global Climate Change and Extreme Weather Events:*  
23  
24 *Understanding the Contributions to Infectious Disease Emergence: Workshop Summary*, National Academy of Science,  
25  
26 1-304.
- 27  
28 Richardson, A.J., 2008. In hot water: zooplankton and climate change. *ICES Journal of Marine Science: Journal du Conseil*, 65,  
29  
30 279-295.
- 31  
32 Rignot, E., Velicogna, I., Van den Broeke, M.R., Monaghan, A., Lenaerts, J.T.M., 2011. Acceleration of the contribution of the  
33  
34 Greenland and Antarctic ice sheets to sea level rise. *Geophysical Research Letters* 38 L05503, 1-5.
- 35  
36 Rijnsdorp, A.D., Peck, M.A., Engelhard, G.H., Mo'llmann, C., Pinnegar, J.K., 2009. Resolving the effect of climate change on  
37  
38 fish populations. *ICES Journal of Marine Science* 66, 1570–1583.
- 39  
40 Risk, M.J., 2014. Assessing the effects of sediments and nutrients on coral reefs. *Current Opinion in Environmental*  
41  
42 *Sustainability* 7, 108-117.
- 43  
44 Roessig, J.M., Woodley, C.M., Cech Jr, J.J., Hansen, L.J., 2004. Effects of global climate change on marine and estuarine fishes  
45  
46 and fisheries. *Reviews in Fish Biology and Fisheries* 14, 251-275.
- 47  
48 Rogers, C.S., 1990. Responses of coral reefs and reef organisms to sedimentation. *Marine Ecology Progress Series* 62, 185-202.
- 49  
50 Rogoff, K., 2003. Globalization and global disinflation. Paper prepared for the Federal Reserve Bank of Kansas City conference  
51  
52 on “Monetary Policy and Uncertainty: Adapting to a Changing Economy”, Jackson Hole, WY, August 28-30, 2003. 1-27,  
53  
54 +App.
- 55  
56 Rosenthal, J., 2009. Climate change and the geographic distribution of infectious diseases. *Ecohealth* 6, 489-495.
- 57  
58  
59  
60  
61  
62  
63  
64  
65

1 Sach, J., 2006. Special presentation: Poverty reduction and environmental sustainability millennium development goals: Why is  
2 so little progress being made? 11-13, In, Cicin-Sain, B., Vandeweerd, V., Bernal, P.A., Williams, L.C., Balgos, M.C.,  
3 Barbieri, J. (eds.), *Reports from the Third Global Conference on Oceans, Coasts, and Islands: Moving the Global Oceans*  
4 *Agenda Forward*, Co-Chairs' Report – Volume 2, Third Global Conference on Oceans, Coasts, and Islands, June 2006.  
5  
6 Sale, P.F., Szmant, A.M. (eds), 2012. Reef reminiscences: Ratcheting back the shifted baselines concerning what reefs used to  
7 be. United Nations University Institute for Water, Environment and Health, Hamilton, ON, Canada, 1-35.  
8  
9 Salm, R.V., Coles, S.L. (eds), 2001. Coral Bleaching and Marine Protected Areas. Proceedings of the Workshop on Mitigating  
10 Coral Bleaching Impact Through MPA Design. Bishop Museum, Honolulu, Hawaii, 29-31 May 2001. Asia Pacific Coastal  
11 Marine Program Report # 0102, The Nature Conservancy, Honolulu, Hawaii, U.S.A, 1-118.  
12  
13 Sánchez, P.A., 2000. Linking climate change research with food security and poverty in the tropics. *Agriculture, Ecosystems*  
14 *and Environment* 82, 371-383.  
15  
16 Sarmiento, J.L., Hughes, T.M.C., Stouffer, R.J., Manabe, S., 1998. Simulated response of the ocean carbon cycle to  
17 anthropogenic climate warming. *Nature* 393, 245-249.  
18  
19 Satterthwaite, D., 2011. How can urban centers adapt to climate change with ineffective or unrepresentative local governments?  
20 *WIREs Climate Change* 2, 767-776.  
21  
22 Scavia, D. Field, J.C., Boesch, D.F., Buddemeier, R.W., Burkett, V., Cayan, D.R., Fogarty, M., M.A. Harwell, R.W. Howarth,  
23 C. Mason, D.J. Reed, T.C. Royer, A.H. Sallenger, and J.G. Titus, 2002. Climate change impact on U.S. coastal and marine  
24 ecosystems. *Estuaries* 25, 149-164.  
25  
26 Shea, E.L., Dyoulgerov, M.F., 1997. Responding to climate variability and change: opportunities for integrated coastal  
27 management in the Pacific Rim. *Ocean & Coastal Management* 37, 109-121.  
28  
29 Shiff, C., 2002. Integrated approach to malaria control. *Clinical Microbiology Reviews*. 15, 278-293.  
30  
31 Schmidt, M.W., Spero, H.J., Lea, D.W., 2004. Links between salinity variation in the Caribbean and North Atlantic  
32 thermohaline circulation. *Nature* 428, 160-163.  
33  
34 Schmittner, A., Stocker, T.F., 1999. The stability of the thermohaline circulation in global warming experiments. *Journal of*  
35 *Climate* 12, 1117-1133.  
36  
37 Schmittner, A., Latif, M., Schneider, 2005. Model projections of the North Atlantic thermohaline circulation for the 21<sup>st</sup> century  
38 assessed by observations. *Geophysical Research Letters* 32, L23710, 1-4.  
39  
40 Shukla, J., Nobre, C., Sellers, P., 1990. Amazon deforestation and climate change. *Science* 247, 1322-1325.  
41  
42 Shuval, H., 2003. Estimating the global burden of thalassogenic diseases: human infectious diseases caused by wastewater  
43 pollution of the marine environment. *Journal of Water Health* 1, 53-64.  
44  
45  
46  
47  
48  
49  
50  
51  
52  
53  
54  
55  
56  
57  
58  
59  
60  
61  
62  
63  
64  
65



1 Siegel, D.A., Franz, B.A., 2010. Oceanography: Century of phytoplankton change. *Nature* 466, 569-571.

2 Singh, R.B., Hales, S., de Wet, N., Raj, R., Hearnden, M., Weinstein, P., 2001. The influence of climate variation and change on  
3 diarrheal disease in the Pacific Islands. *Environmental Health Perspectives* 109, 155-159.

4 Slater, R.D., Totterdell, I.J., Weirig, M.F., Yamanaka, Y., Yool, A., Pezza, A.B., Simmonds, I., 2005. The first South Atlantic  
5 hurricane: Unprecedented blocking, low shear and climate change, *Geophysical Research Letters* 32, L15712,  
6 doi:10.1029/2005GL023390.

7 Smit, B., Pilifosova, O., 2001. Adaptation to climate change in the context of sustainable development and equity. In: McCarthy  
8 JJ (ed) *Climate change 2001: impacts, adaptation and vulnerability*. IPCC working group II. Cambridge University Press,  
9 Cambridge, 877-912.

10 Soliani, L., Rossi, O., 1992. Demographic factors and land-use planning in the small islands of southern Europe. *Environmental*  
11 *Management* 16, 603-611.

12 Stage, J., 2010. Economic valuation of climate change adaptation in developing countries. *Annals of the New York Academy of*  
13 *Sciences* 1185, 150-163.

14 Steneck, R.S., 2006. Staying connected in a turbulent world. *Science* 311, 480-481.

15 Stern, N., 2006. What is the economics of climate change? *World Economics* 7, 1-10.

16 Still, C.J., Foster, P.N., Schneider, S.H., 1999. Simulating the effects of climate change on tropical montane cloud forests.  
17 *Nature* 398, 608-610.

18 Stock, C.A., Alexander, M.A., Bond, N.A., Brander, K.M., Cheung, W.W.L., Curchitser, E.N., Delworth, T.L., Dunne, J.P.,  
19 Griffies, S.M., Haltuch, M.A., Hare, J.A., Hollowed, A.B., Lehodey, P., Levin, S.A., Link, J.S., Rose, K.A., Rykaczewski,  
20 R.R., Sarmiento, J.L., Souffer, R.J., Schwing, F.B., Vecchi, G.A., Werner, F.E. 2011. On the use of IPCC-class models to  
21 assess the impact of climate on living marine resources. *Progress in Oceanography* 88, 1-27.

22 Stocker, T.F., Schmittner, A., 1997. Influence of CO<sub>2</sub> emission rates on the stability of the thermohaline circulation. *Nature* 388,  
23 862-865.

24 Stocker, T.F., Knutti, R., Plattner, G.K., 2001. The future of the thermohaline circulation—a perspective. *The oceans and rapid*  
25 *climate change: past, present, and future*, 277-293.

26 Stoeckl, N., Hicks, C.C., Mills, M., Fabricius, K., Esparon, M., Kroon, F., Kaur, K., Costanza, R., 2011. The economic value of  
27 ecosystem services in the Great Barrier Reef: our state of knowledge. *Ann. N.Y. Acad. Sci.*, vol. 1219, pp. 113-133, 2011.

28 Tacoli, C., 2009. Crisis or adaptation? Migration and climate change in a context of high mobility. *Environment and*  
29 *Urbanization* 21, 513-525.

- 1 Tabor, K., Williams, J.W., 2010. Globally downscaled climate projections for assessing the conservation impacts of climate  
2 change. *Ecological Applications* 20, 554-565.
- 3
- 4 Taylor, G.T., Muller-Karger, F.E., Thunell, R.C., Scranton, M.I., Astor, Y., Varela, R., Ghinaglia, L.T., Lorenzoni, L., Fanning,  
5 K.A., Hameed, S., Doherty, O., 2012. Ecosystem responses in the southern Caribbean Sea to global climate change.  
6 *Proceedings of the National Academy of Sciences, USA*, 109:19315-19320.
- 7
- 8
- 9
- 10 Terry, G. (ed.), 2009. *Climate change and gender justice*. Published by Practical Action Publishing in association with Oxfam  
11 GB, Warwickshire, UK, 1-212.
- 12
- 13
- 14 Thomas, D.S.G., Twyman, C. 2005. Equity and justice in climate change adaptation amongst natural-resource-dependent  
15 societies. *Global Environmental Change* 15, 115-124.
- 16
- 17
- 18 Tol, R.S.J., 2002. Estimates of the damage costs of climate change. Part 1: Benchmark estimates. *Environmental and Resource*  
19 *Economics* 21, 47-73.
- 20
- 21
- 22 Toole, M.J., & R.J. Waldman. 1993. Refugees and displaced persons: war, hunger, and public health. *Jama* 270, 600-605.
- 23
- 24 Tompkins, E.L., Adger, W., 2004. Does adaptive management of natural resources enhance resilience to climate change?  
25 *Ecology and Society* 9, 10.
- 26
- 27
- 28 Tompkins, E.L., Nicholson, S.A., Hurlston, L.A., Boyd, E., Hodge, G.B., Clarke, G., Trotz, N., Varlack, L., 2005. Surviving  
29 climate change in small islands: A guidebook. Tyndall Centre for Climate Change Research, School of Environmental  
30 Sciences, University of East Anglia, Norwich, UK, 1-128.
- 31
- 32
- 33
- 34 Traill, L.W., Bradshaw, C.J.A., Field, H.E., Brook, B.W., 2009. Climate change enhances the potential impact of infectious  
35 disease and harvest on tropical waterfowl. *Biotropica* 41, 414-423.
- 36
- 37
- 38 Trenberth, K.E., 1990. Recent observed interdecadal climate changes in the northern hemisphere. *Bulletin of the American*  
39 *Meteorological Society* 71, 988-993.
- 40
- 41
- 42 Turner, R.A., Cakacaka, A., Graham, N.A.J., Polunin, N.V.C., Pratchett, M.S., Stead, S.M., Wilson, S.K. 2007. Declining  
43 reliance on marine resources in remote South Pacific societies: ecological versus socio-economic drivers. *Coral Reefs* 26,  
44 997-1008.
- 45
- 46
- 47
- 48 Uyarra, M.C., Côté, I.M., Gill, J.A., Tinch, R.R., Viner, D., Watkinson, A.R., 2005. Island-specific preferences of tourists for  
49 environmental features: implications of climate change for tourism-dependent states. *Environmental Conservation* 32, 11-  
50 19.
- 51
- 52
- 53
- 54 van Aalsts, M.K., Cannon, T., Burton, I. 2008. Community level adaptation to climate change: The potential role of  
55 participatory community risk assessment. *Global Environmental Change* 18, 165-179.
- 56
- 57
- 58
- 59
- 60
- 61
- 62
- 63
- 64
- 65

- 1 van Hooidonk, R.J., Manzello, D.P., Moyer, J., Brandt, M.E., Hendee, J.C., McCoy C., Manfrino, C., 2009. Coral bleaching at  
2 Little Cayman, Cayman Islands 2009. *Estuarine Coastal Shelf Science* 106, 80-84.
- 3  
4 van Vliet, A.J., Overeem, A., De Groot, R.S., Jacobs, A.F., Spijksma, F., 2002. The influence of temperature and climate  
5 change on the timing of pollen release in the Netherlands. *International Journal of Climatology* 22, 1757-1767.
- 6  
7  
8 Vega-Thurber, R.L., Burkepile, D.E., Fuchs, C., Shantz, A.A., McMinds, R., Zaneveld, J.R., 2014. Chronic nutrient enrichment  
9 increases prevalence and severity of coral disease and bleaching. *Global Change Biology* 20, 544-554.
- 10  
11  
12 Veron, J.E.N., Hoegh-Guldberg, O., Lenton, T.M., Lough, J.M., Obura, D.O., Pearce-Kelly, P., Sheppard, C.R.C., Spalding, M.,  
13 Stafford-Smith, M.G., Rogers, A.D., 2009. The coral reef crisis: The critical importance of <350 ppm CO<sub>2</sub>. *Marine  
14 Pollution Bulletin*, 58, 1428-1436.
- 15  
16  
17  
18 Visbeck, M., 2002. The Ocean's Role in Atlantic Climate Variability. *Science* 297, 2223-2224.
- 19  
20 Vitousek, P.M., Mooney, H.A., Lubchenco, J., Melillo, J.M. 1997. Human domination of Earth's ecosystems. *Science* 277, 494-  
21 499.
- 22  
23  
24 Vörösmarty, C.J., Green, P., Salisbury, J. Lammers, R.B., 2000. Global water resources: Vulnerability from climate change and  
25 population growth. *Science* 289, 284-288.
- 26  
27  
28 Walker, B., Holling, C.S., Carpenter, S.R., Kinzig, A., 2004. Resilience, adaptability and transformability in social-ecological  
29 systems. *Ecology and Society* 9,5, 1-9.
- 30  
31  
32 Walker, L., 2006. Small island developing states and the Mauritius strategy. 31-37. In, Cicin-Sain, B., Vandeweerd, V., Bernal,  
33 P.A., Williams, L.C., Balgos, M.C., Barbieri, J. (eds.), *Reports from the Third Global Conference on Oceans, Coasts, and  
34 Islands: Moving the Global Oceans Agenda Forward*, Co-Chairs' Report – Volume 2, Third Global Conference on  
35 Oceans, Coasts, and Islands, June 2006.
- 36  
37  
38  
39  
40 Walther, G.R., Post, E., Convey, P., Menzel, A., Parmesan, C., Beebee, T.J.C., Fromentin, J.M., Hoegh-Guldberg, O.,  
41 Bairlein, F., 2002. Ecological responses to recent climate change. *Nature* 416, 389-395.
- 42  
43  
44 Warner, K., 2010. Global environmental change and migration: Governance challenges. *Global Environmental Change* 20, 402-  
45 413.
- 46  
47  
48  
49 Weber, M., de Beera, D., Lotta, C., Polerecky, L., Kohlsa, K., Abedd, R.M.M., Ferdelmana, T.G., Fabricius, K.E., 2012.  
50 Mechanisms of damage to corals exposed to sedimentation. *Proceedings of the National Academy of Sciences, USA* 109,  
51 E1558-E1567.
- 52  
53  
54  
55 Webster, P.J., Holland, G.J., Curry, J.A., Chang, H.-R., 2005. Changes in tropical cyclone number, duration, and intensity in a  
56 warming environment. *Science* 309, 1844-1846.
- 57  
58  
59  
60  
61  
62  
63  
64  
65

- 1  
2 Wilby, R.L., Hay, L.E., Gutowski, W.J., Arritt, R.W., Takle, E.S., Pan, Z., Leavesley, G.H., Clark, M.P., 2000. Hydrological  
3 responses to dynamically and statistically downscaled climate model output. *Geophysical Research Letters* 27, 1199-1202.
- 4 Wilkinson, C., 2008. Status of coral reefs of the world: 2008. Global Coral Reef Monitoring Network and Reef and Rainforest  
5 Research Centre, Townsville, Australia, 1-296.
- 6  
7  
8 Woodworth, P.L., White, N.J., Jevrejeva, S., Holgate, S.J., Church, J.A., Gehrels, W.R., 2009. Evidence for the accelerations of  
9 sea level on multi-decade and century timescales. *International Journal of Climatology*, 29, 777-789.
- 10  
11  
12 Wong, P.P., 2003. Where have all the beaches gone? Coastal erosion in the tropics. *Singapore Journal of Tropical Geography*  
13  
14 24, 111-132.
- 15  
16 Woodward, A., Lindsay, G., Singh, S., 2011. Adapting to climate change to sustain health. *WIREs Climate Change* 2, 271-282.
- 17  
18 Woodworth, P.L., White, N.J., Jevrejeva, S., Holgate, S.J., Church, J.A., Gehrels, W.R., 2009. Evidence for the accelerations of  
19 sea level on multi-decade and century timescales. *International Journal of Climatology* 29, 777-789.
- 20  
21  
22 Young, O.R., 2010. Institutional dynamics: Resilience, vulnerability and adaptation in environmental and resource regimes.  
23  
24 *Global Environmental Change* 20, 378-385.
- 25  
26 Ziervogel, G., Ericksen, P.J., 2010. Adapting to climate change to sustain food security. *WIREs Climate Change* 1, 525-540.
- 27  
28 Ziska, L.H., Gebhard, D.E., Frenz, D.A., Faulkner, S., Singer, B.D., Straka, J.G., 2003. Cities as harbingers of climate change:  
29  
30 Common ragweed, urbanization, and public health. *Journal of Allergy Clinical Immunology* 111, 290-295.
- 31  
32  
33  
34  
35  
36  
37  
38  
39  
40  
41  
42  
43  
44  
45  
46  
47  
48  
49  
50  
51  
52  
53  
54  
55  
56  
57  
58  
59  
60  
61  
62  
63  
64  
65

## Figure captions

1  
2  
3 Fig. 1. Current and projected increases in atmospheric (ATM) carbon dioxide (CO<sub>2</sub>) concentrations at Mauna Loa, Hawaii,  
4 based in a non-linear regression analysis (1950-2150). Data source: ATM CO<sub>2</sub> concentrations from 1959 to 2015 (NOAA Earth  
5 System Research Laboratory, Global Monitoring Division, [http://www.esrl.noaa.gov/gmd/ccgg/trends/#mlo\\_data](http://www.esrl.noaa.gov/gmd/ccgg/trends/#mlo_data)).  
6  
7  
8  
9

10 Fig. 2. Coral reef ecosystems are highly vulnerable to climate change. Increased sea surface temperatures for periods of time  
11 over 1-2 months often result in massive coral bleaching events where reef-building corals expel their symbiotic zooxanthellae.  
12 In this example, laminar star corals (*Orbicella faveolata*), one of the most significant reef-building species of the Atlantic,  
13 bleached in Puerto Rico during the unprecedented sea surface warming event of 2005 across the wider Caribbean. Several large-  
14 sized reef-building species in the Atlantic are among the most vulnerable species to massive bleaching (Brandt, 2009; van  
15 Hooidonk et al., 2012). If bleaching extends for several weeks corals may become susceptible to microbial-borne diseases and  
16 suffer mass mortalities decimating entire populations with irreversible consequences for reef accretion, ecosystem functions,  
17 productivity, biodiversity, ecosystem resilience and services. The 2005 event resulted in a 60-80% loss in percent living coral  
18 cover across the northeastern Caribbean region (Miller et al., 2006, 2009; Hernández-Pacheco et al., 2011).  
19  
20  
21  
22  
23  
24  
25  
26  
27  
28

29 Fig. 3. Conceptual integrated model of climate change impacts on tropical coastal ecosystems, public health, local economies  
30 and on coastal community livelihoods.  
31  
32  
33

34 Fig. 4. Conceptual integrated model of declining productivity of coupled social-ecological systems as a combined result of  
35 increasing human population and climate change.  
36  
37  
38  
39

40 Fig. 5. Conceptual integrated model of declining productivity of increased social vulnerability as a result of declining coupled  
41 social-ecological systems and climate change.  
42  
43  
44

45 Fig 6. Conceptual model of sustainable adaptability of coupled social-ecological systems.  
46  
47

48 Fig 7. Conceptual model of sustainable adaptability of first lines of defense and ecosystem services.  
49  
50

51 Fig 8. Conceptual model of sustainable adaptability of fisheries.  
52  
53  
54  
55  
56  
57  
58  
59  
60  
61  
62  
63  
64  
65

TABLE 1

Most-likely impacts of climate change on coastal ecosystems, and local economies

System	Summary of responses	
	Impact	Synergistic response
Weather	Increased frequency of extreme weather events (i.e., droughts, wildfires, storms, flash floods, landslides)	Altered freshwater availability; Declining ecosystem productivity; Declining crop production and food security; Declining riverine, estuarine and coastal water quality; Increased property loss and vulnerability to extreme weather events
Coastal lands	Sea level rise	Degradation of coastal aquifers by saline intrusion; Increased vulnerability of adjacent human communities to recurrent coastal flooding events; Flooding of urbanized areas (i.e., storm and sewage sewers; sewage treatment facilities, etc.); Increased coastal pollution and turbidity due to mixing with polluted effluents
Beaches	Sea level rise Increased hurricane frequency	Increased beach erosion and property loss; Irreversible damage to coastal amenities and infrastructure; Declining aesthetic value of coastal ecosystems as a result of coastal erosion and water quality decline; Ecosystem resilience decline; Loss of goods and services
Mangroves, estuaries	Sea level rise	Altered spatial distribution of mangrove/wetland ecosystem functions and productivity; Potential loss of buffering role of major flooding events and wave action during hurricanes, depending on location
Seagrasses	Sea level rise Sea surface warming	Potential long-term invasion of flooded coastal plains; Rapid declining condition of existing seagrasses due to declining water quality and pollution; Declining ecosystem functions and productivity
Coral reefs	Sea surface warming Ocean acidification Sea level rise	Recurrent massive coral bleaching and mass coral mortalities; Declining fisheries and overall biodiversity; Losing ecosystem resilience, functions, services and benefits; Declining coastal water quality for sustainable reef growth; Declining coral skeletal extension and calcification rates; Increased bioerosion rates; Shortening of reef-based food webs; Declining productivity and availability of natural products of biomedical significance; Declining aesthetic value for tourism industry; Potentially declining role as CO <sub>2</sub> sinkhole
Local economy and sustainability	Multiple, across widespread socio-economic sectors	Declining sustainable productivity of crop and fisheries, food security, and coastal community livelihoods; Declining environmental conditions, local economy, increased co-dependence in globalized economic models which may further negatively impact local economies; Reduction in long-haul passengers due to ethical concerns associated to carbon footprint and regulatory taxes; Changes in preferences of the tourism market; Increased vulnerability of beachfront properties and public infrastructure to hurricanes and SLR; Increased costs of SLR mitigation; Increased cost of insurance for beachfront properties; Increased cost of treating deteriorated public health conditions

TABLE 2

Most-likely impacts of climate change on coastal human settlements public health

Weather event	Summary of responses	
	Health effects	Adaptation measures
Heat waves	Heat stress, mostly on children, old citizens, women, the poor, those with respiratory disease	Early warning systems; architecture; air conditioning; community response; massive reforestation campaigns; migration
Extreme weather events	Injuries from storms; drowning from coastal or watershed flooding; mostly on coastal, low-lying land dwellers, the poor	Early warning systems; zoning and land use policies; architecture; engineering; massive reforestation campaigns; migration
Sea level rise	Injuries; drowning; water and soil salinization; ecosystem and economic disruption; mostly on coastal dwellers, the poor	Engineering; architecture; zoning and land use policies; abandonment and migration
Drought and increased temperature	This may result in increased respiratory disease exacerbation, asthma, mental health problems, food and water shortages, malnutrition, food- and water-borne diseases, mass population displacement and potential international conflicts	Technological advances; enhanced delivery systems; public education; water treatment; medical treatment; watershed management; zoning and land use policies; vector control; negotiation and conflict mediation; post-disaster response; migration
Allergenic responses	Increases in temperature, CO <sub>2</sub> , and precipitation tend to foster the proliferation of weedy plant species that are known producers of allergenic pollen; Higher levels of CO <sub>2</sub> in the atmosphere act as a fertilizer for plant growth; Warmer temperatures and increased precipitation cause some plants to grow faster, bloom earlier, and produce more pollen; Temperature changes are expected to alter allergy seasons to begin earlier and last longer and the distribution of allergenic plant varieties to change over time	Increased expenses in health care; Improved technologies aimed at improving indoor air quality; air conditioning; migration
Coastal water pollution	Increased prevalence of waterborne, foodborne, and/or vector-transmitted diseases; Declining coastal water quality due to pollution may increase human vulnerability to waterborne diseases; Consumption of polluted fish or invertebrates can increase the vulnerability to foodborne diseases; Exposure by bathers and swimmers; Affected distribution and prevalence of vector-transmitted diseases; Affected tourism and revenues; Most vulnerable are old citizens, children, women, the poor	Improved technologies aimed at reducing pollution; Altered agricultural and fishery practices; Abandonment and migration
Coastal land inundation	Sea level rise causing saline intrusion into coastal aquifers; Increased vulnerability of adjacent human communities to recurrent coastal flooding events; Degraded aquifers; Flooding of urbanized areas (i.e., storm and sewage sewers, sewage treatment facilities, etc.); Increased coastal pollution and turbidity; Declining food production and food security	Highly expensive engineering solutions (i.e., sea walls and levees); Improved technologies aimed at reducing pollution; Altered agricultural practices; Abandonment and migration

Figure 1

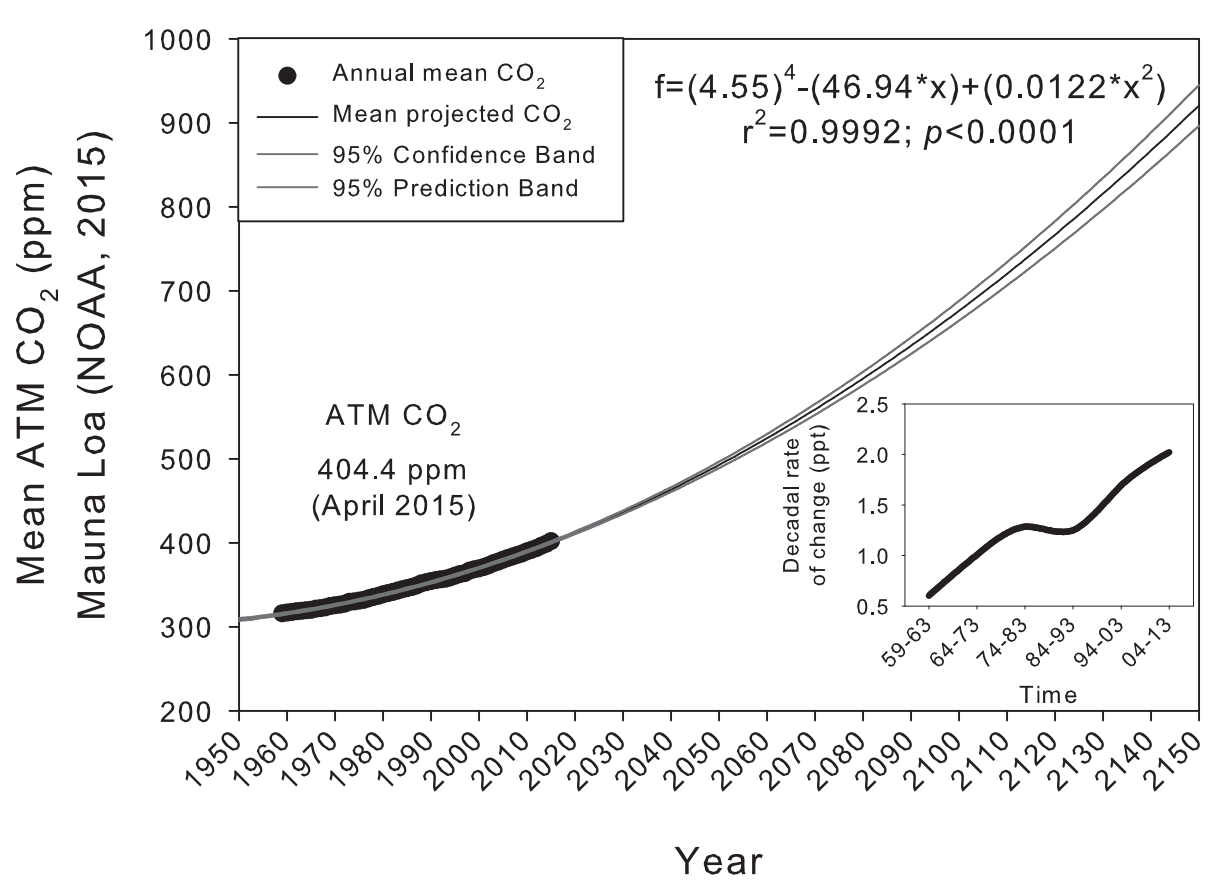




Figure 2



Figure 3

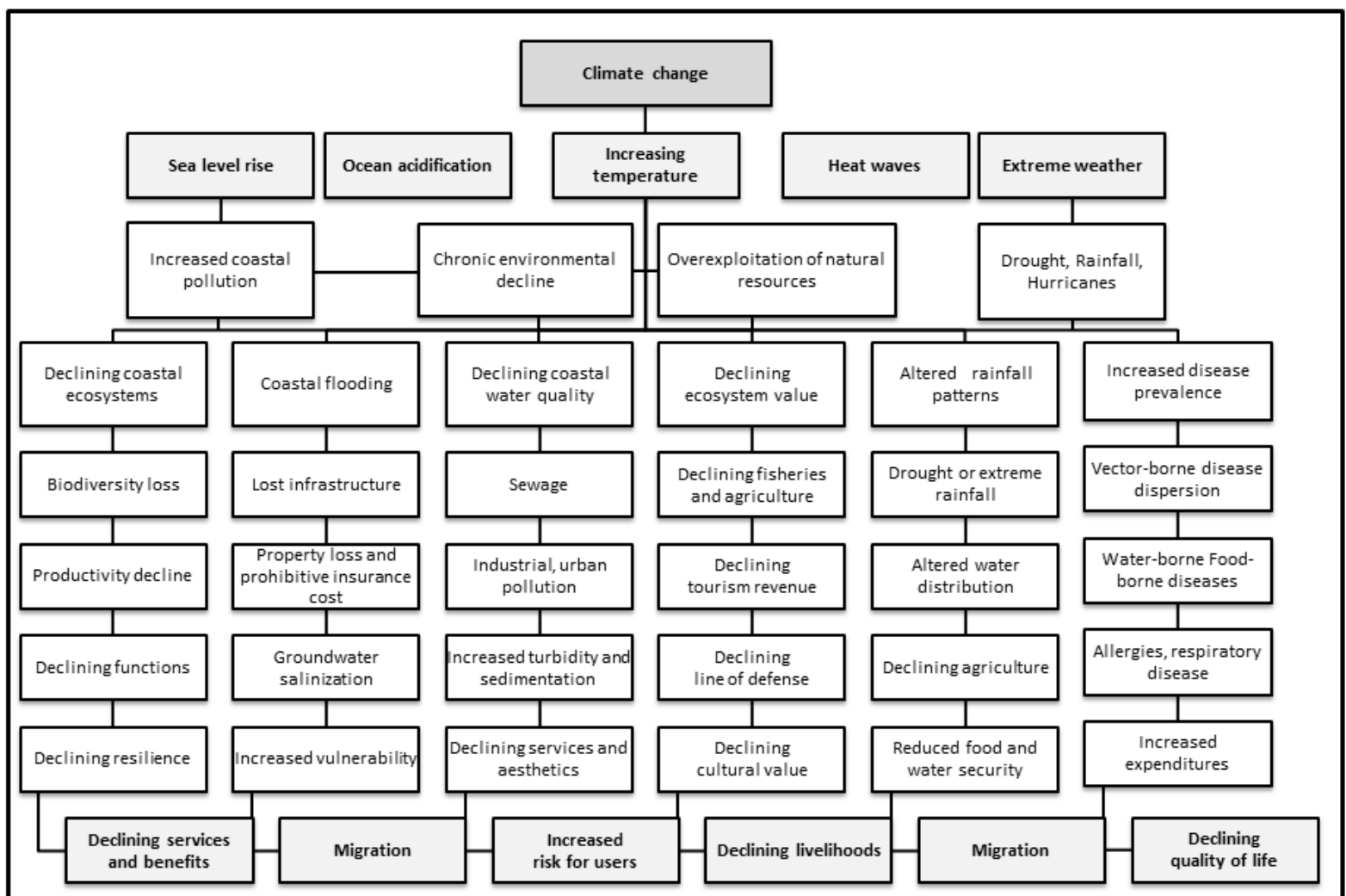


Figure 4

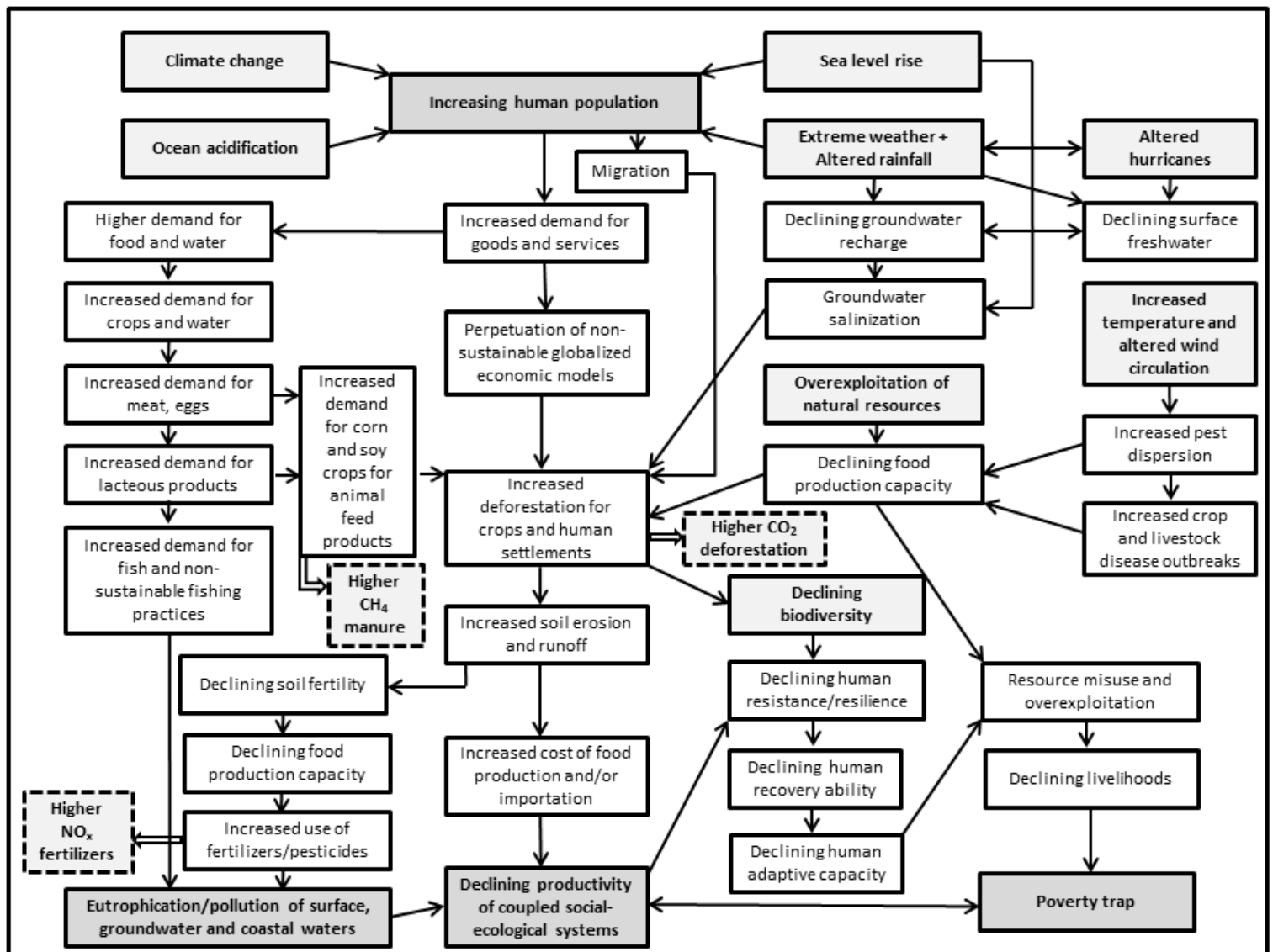
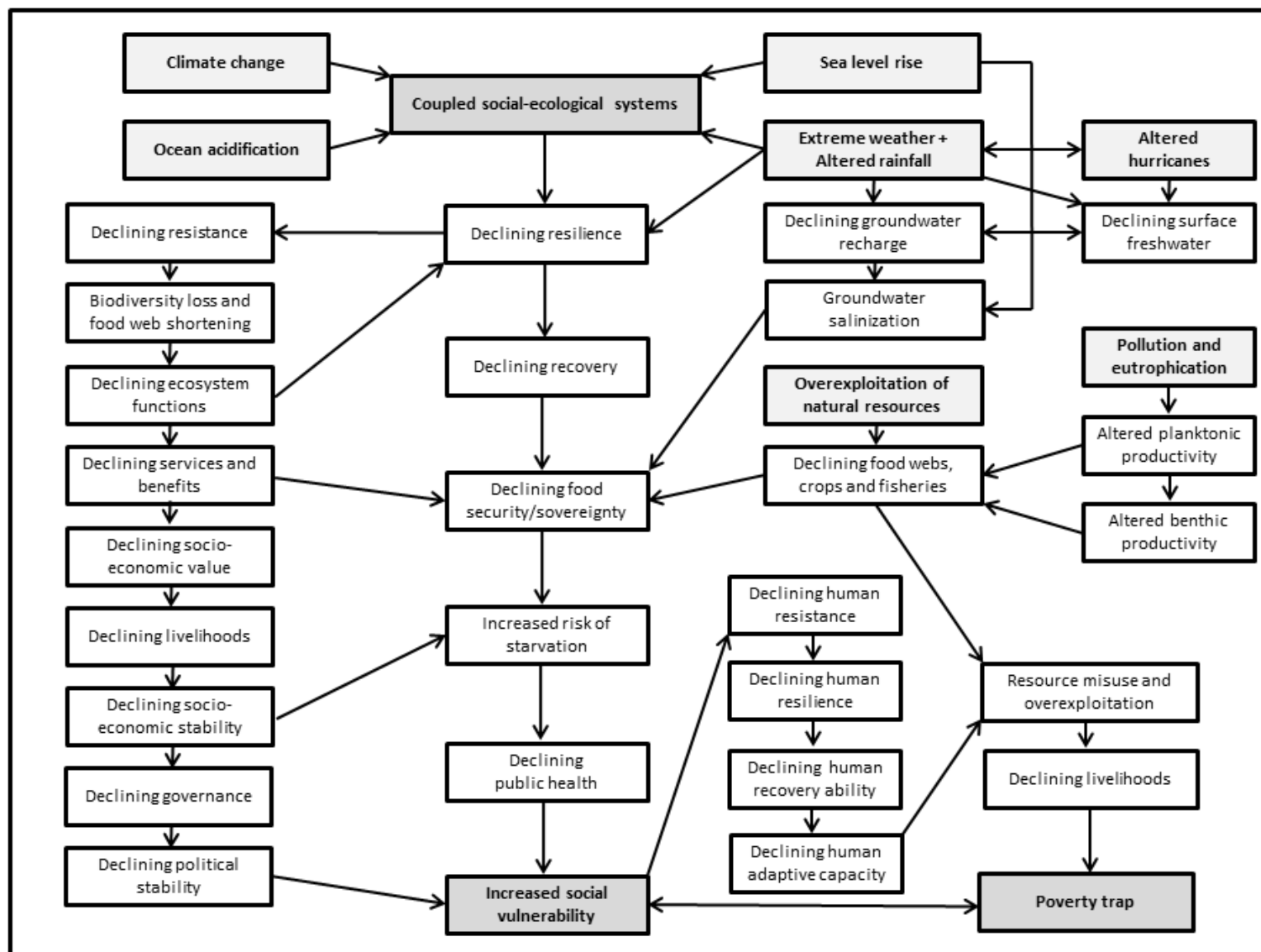
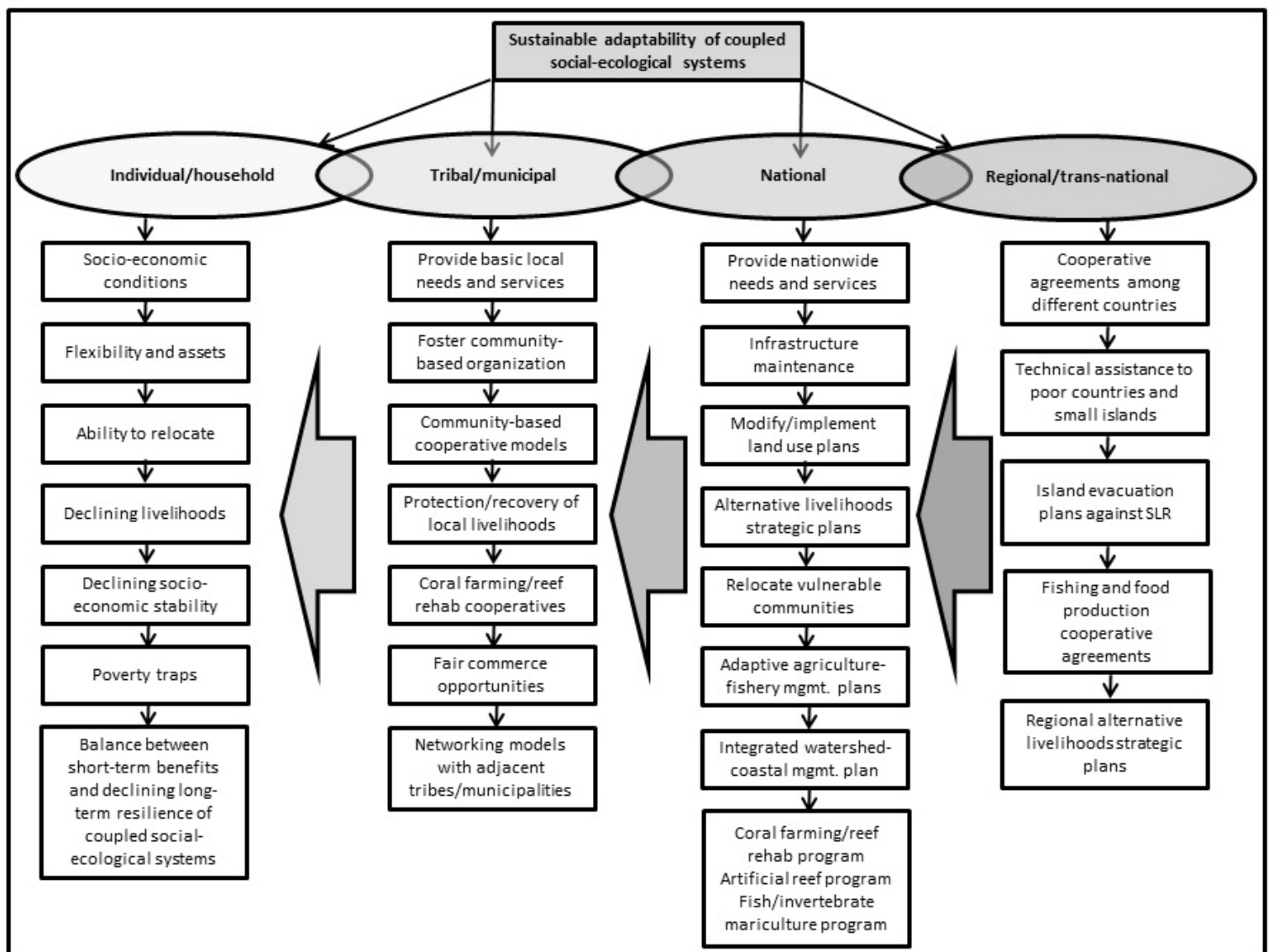


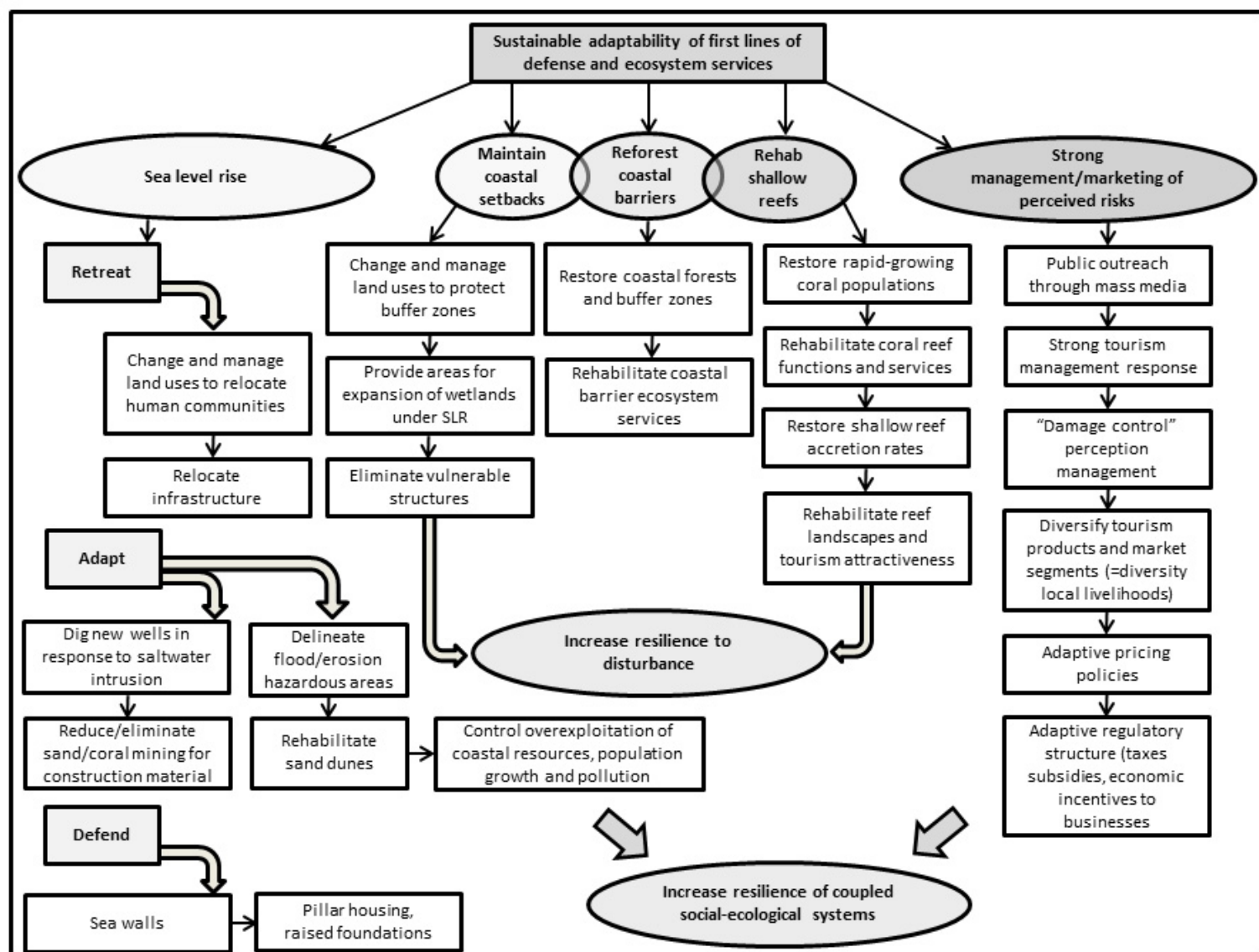
Figure 5



Figure(s)



Figure(s)



Figure(s)

